

CONTRACT NO. 62376

CABLE PLAN LEGEND

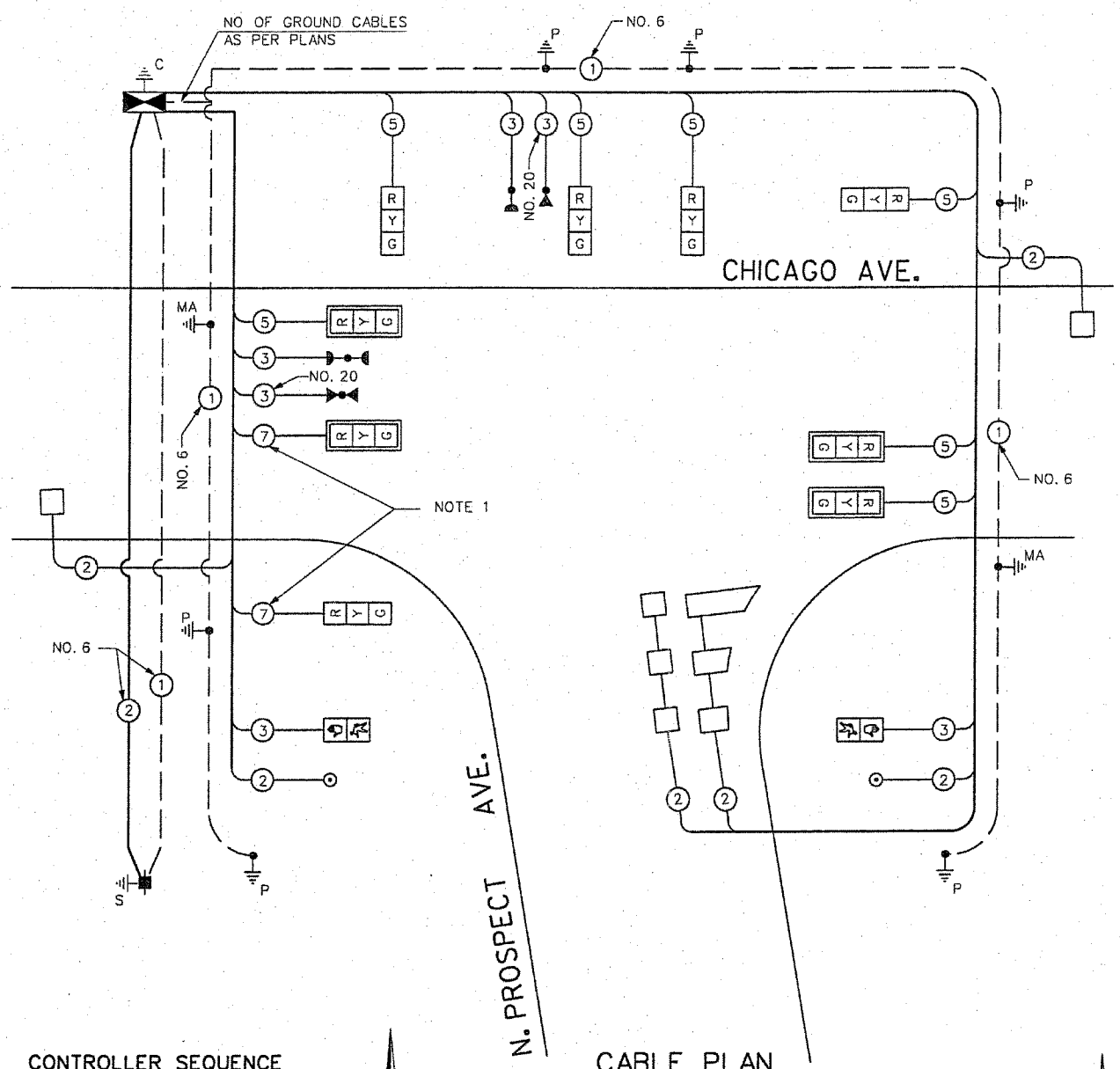
- | EXISTING | PROPOSED | |
|----------|----------|---|
| | | 8" (200mm) TRAFFIC SIGNAL SECTION |
| | | 12" (300mm) TRAFFIC SIGNAL SECTION |
| | | 12" (300mm) PEDESTRIAN SIGNAL SECTION |
| | | 12" (300mm) PEDESTRIAN SIGNAL SECTION |
| | | CONTROLLER CABINET |
| | | SERVICE INSTALLATION |
| | | TELEPHONE INSTALLATION |
| | | VEHICLE DETECTOR, INDUCTION LOOP |
| | | MAGNETIC DETECTOR |
| | | EMERGENCY VEHICLE LIGHT DETECTOR |
| | | CONFIRMATION BEACON |
| | | PUSH-BUTTON DETECTOR |
| | | 2 DENOTES NUMBER OF CONDUCTORS, ALL CABLE NO. 14 EXCEPT AS INDICATED. ALL LOOP DETECTOR CABLE TO BE SHIELDED. |
| | | 1 GROUND CABLE IN CONDUIT NO. 6 SOLID COPPER (GREEN) |
| | | 24 FIBER OPTIC CABLE IN CONDUIT NO. 62.5/125 2-MM12F & SM12F |
| | | SIGNAL FACE WITH BACKPLATE. "P" INDICATES PROGRAMMED HEAD. |
| | | RAILROAD CONTROL CABINET |
| | | ILLUMINATED SIGN, FIBER OPTIC "NO LEFT TURN" |
| | | ILLUMINATED SIGN, FIBER OPTIC "NO RIGHT TURN" |
| | | H/C GROUND ROD AT HANDHOLE, DOUBLE HANDHOLE, OR CONTROLLER |
| | | P GROUND ROD AT POST OR MAST ARM POLE |
| | | S GROUND ROD AT ELECTRIC SERVICE INSTALLATION |
| | | LOCAL AND MASTER CONTROLLER |
| | | MICROWAVE VEHICLE SENSOR |

SCHEDULE OF QUANTITIES

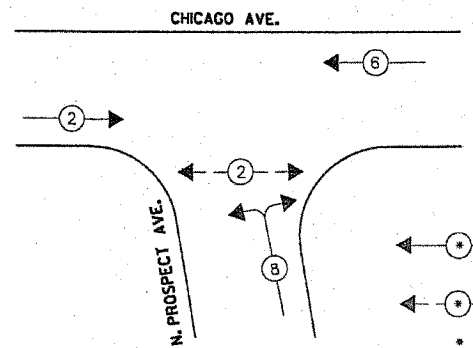
QUANTITY	UNIT	ITEM
26.25	SO FT	SIGN PANEL - TYPE I
439	FOOT	CONDUIT IN TRENCH, 2" DIA., GALVANIZED STEEL
153	FOOT	CONDUIT IN TRENCH, 2 1/2" DIA., GALVANIZED STEEL
104	FOOT	CONDUIT IN TRENCH, 4" DIA., GALVANIZED STEEL
144	FOOT	CONDUIT PUSHED, 2" DIA., GALVANIZED STEEL
111	FOOT	CONDUIT PUSHED, 4" DIA., GALVANIZED STEEL
5	EACH	HANDHOLE
1	EACH	DOUBLE HANDHOLE
604	FOOT	TRENCH AND BACKFILL FOR ELECTRICAL WORK
1	EACH	FULL-ACTUATED CONTROLLER AND TYPE IV CABINET
312	FOOT	ELECTRIC CABLE IN CONDUIT, SIGNAL NO. 14 2C
493	FOOT	ELECTRIC CABLE IN CONDUIT, SIGNAL NO. 14 3C
1050	FOOT	ELECTRIC CABLE IN CONDUIT, SIGNAL NO. 14 5C
184	FOOT	ELECTRIC CABLE IN CONDUIT, SIGNAL NO. 14 7C
1124	FOOT	ELECTRIC CABLE IN CONDUIT, LEAD-IN, NO. 14 1PAIR
74	FOOT	ELECTRIC CABLE IN CONDUIT, SERVICE, NO. 6 2C
2	EACH	TRAFFIC SIGNAL POST, GALVANIZED STEEL 10 FT.
2	EACH	TRAFFIC SIGNAL POST, GALVANIZED STEEL 14 FT.
1	EACH	TRAFFIC SIGNAL POST, GALVANIZED STEEL 16 FT.
1	EACH	TRAFFIC SIGNAL POST, GALVANIZED STEEL 18 FT.
1	EACH	STEEL MAST ARM ASSEMBLY AND POLE, 22 FT.
1	EACH	STEEL MAST ARM ASSEMBLY AND POLE, 26 FT.
24	FOOT	CONCRETE FOUNDATION, TYPE A
4	FOOT	CONCRETE FOUNDATION, TYPE D
20	FOOT	CONCRETE FOUNDATION, TYPE E 30-INCH DIAMETER
4	EACH	TRAFFIC SIGNAL BACKPLATE
4	EACH	INDUCTIVE LOOP DETECTOR
305	FOOT	PREFORMED DETECTOR LOOP
2	EACH	LIGHT DETECTOR
1	EACH	LIGHT DETECTOR AMPLIFIER
2	EACH	PEDESTRIAN PUSH-BUTTON
1	EACH	SERVICE INSTALLATION, POLE MOUNT
518	FOOT	ELECTRIC CABLE IN CONDUIT, GROUNDING, NO. 6 1C
163	FOOT	ELECTRIC CABLE IN CONDUIT NO. 20 3/C, TWISTED, SHIELDED
4	EACH	SIGNAL HEAD, L.E.D., I-FACE, 3-SECTION, MAST ARM MOUNTED
5	EACH	SIGNAL HEAD, L.E.D., I-FACE, 3-SECTION, BRACKET MOUNTED
2	EACH	PEDESTRIAN SIGNAL HEAD, L.E.D., I-FACE, BRACKET MOUNTED

100% COST TO THE VILLAGE OF CLARENDON HILLS

NOTE 1: THE CABLES FOR THESE SIGNAL HEADS SHALL BE 7C TO ACCOMMODATE 5-SECTION SIGNAL HEADS, IF NEEDED, IN THE FUTURE.



CONTROLLER SEQUENCE

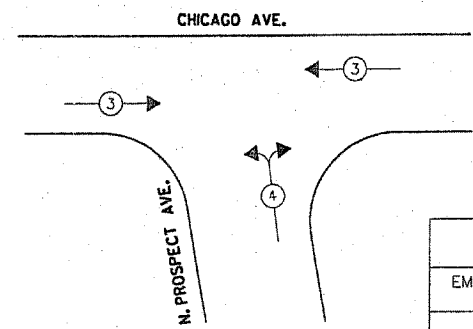


PHASE DESIGNATION DIAGRAM

- LEGEND**
- -
 - NUMBER REFERS TO ASSOCIATED PHASE

CABLE PLAN

EMERGENCY VEHICLE PREEMPTION SEQUENCE



PROPOSED EMERGENCY VEHICLE PREEMPTORS		
EMERGENCY VEHICLE PREEMPTOR	3	4
MOVEMENT	←	→

I.D.O.T. TRAFFIC SIGNAL INSTALLATION ELECTRICAL SERVICE REQUIREMENTS						TOTAL WATTAGE
TYPE	NO LAMPS	WATTAGE	INCAND.	LED	OPERATION	
SIGNAL (RED)	9	135	17	0.50		76.50
(YELLOW)	9	135	25	0.25		56.25
(GREEN)	9	135	15	0.25		33.75
ARROW	-	135	12	0.10		-
PED. SIGNAL	2	90	25	1.00		50.00
CONTROLLER	1	100	100	1.00		100.00
ILLUM. SIGN				0.05		
FLASHER				0.50		
TOTAL =						316.50

FOUNDATION (DEPTH)	FT. (m)	CABLE SLACK	FT. (m)	VERTICAL	FT. (m)
TYPE A-POST	4 (1.2)	HANDHOLE	6.5 (2.0)	ALL FOUNDATIONS	3.5 (1.0)
D-CONTROLLER	4 (1.2)	DOUBLE HANDHOLE	13 (4.0)	MAST ARM (1) POLE	20'+L-2'
E-M.ARM POLE		SIGNAL POST	2 (0.6)	BRACKET MOUNTED	(6m+1-0.6m)=
24" (600mm)	10 (3.0)	CONTROLLER CAB.	1 (0.5)	PED. PUSHBUTTON	13 (4.0)
30" (750mm)	15 (4.6)	FIBER OPTIC	13 (4.0)	ELECTRIC SERVICE	4 (1.2)
		ELECTRIC SERVICE	1 (0.5)	ELECTRIC SERVICE	13.5 (4.1)
		GROUND CABLE	1 (0.5)	SERVICE TO GROUND	13.5 (4.1)
				POST MOUNTED	5 (1.5)

ENERGY COSTS TO: TOTAL = 316.50

ILLINOIS DEPARTMENT OF TRANSPORTATION
201 WEST CENTER COURT
SCHAUMBURG, ILLINOIS 60196-1096

ENERGY SUPPLY CONTACT: COMED
PHONE: (866) 639-3532
COMPANY: COMED

GO GANDHI AND ASSOCIATES, INC.
ENGINEERS AND PLANNERS
6035 N. NORTHWEST HIGHWAY
SUITE 308
CHICAGO, ILLINOIS 60631 TEL. (773) 774-6910

REVISIONS	
NAME	DATE

ILLINOIS DEPARTMENT OF TRANSPORTATION
CABLE PLAN
PHASE DESIGNATION DIAGRAM
EMERGENCY VEHICLE PREEMPTION SEQUENCE
AND SCHEDULE OF QUANTITIES
CHICAGO AVENUE AT N. PROSPECT AVENUE

SCALE: N.T.S. DRAWN BY: JEK
DATE: SEPTEMBER 30, 2004 CHECKED BY: PKG/BB