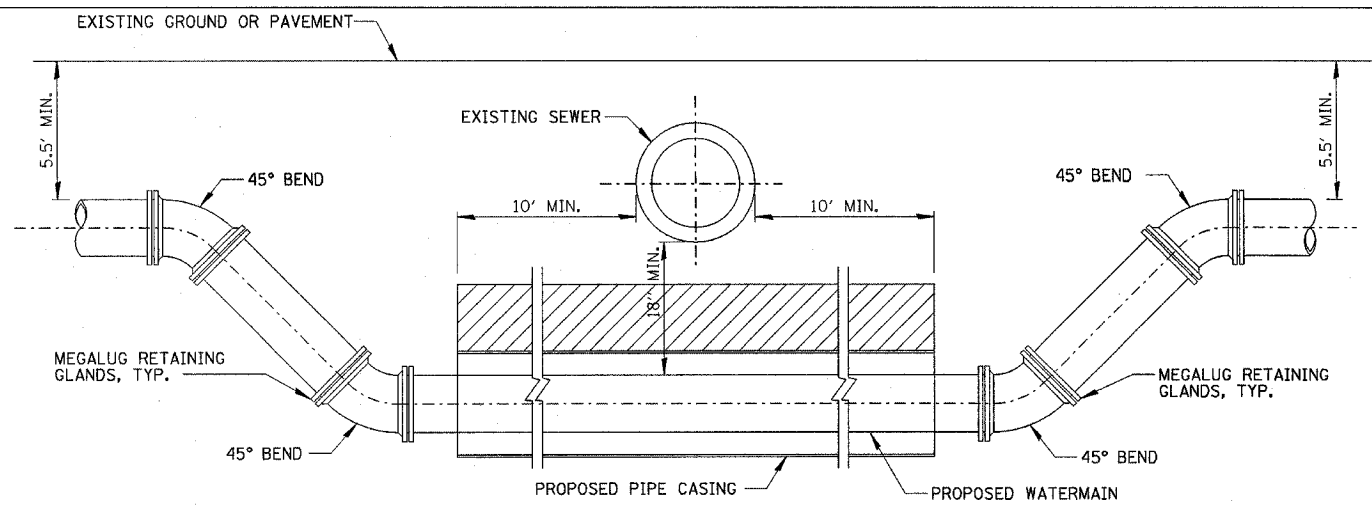
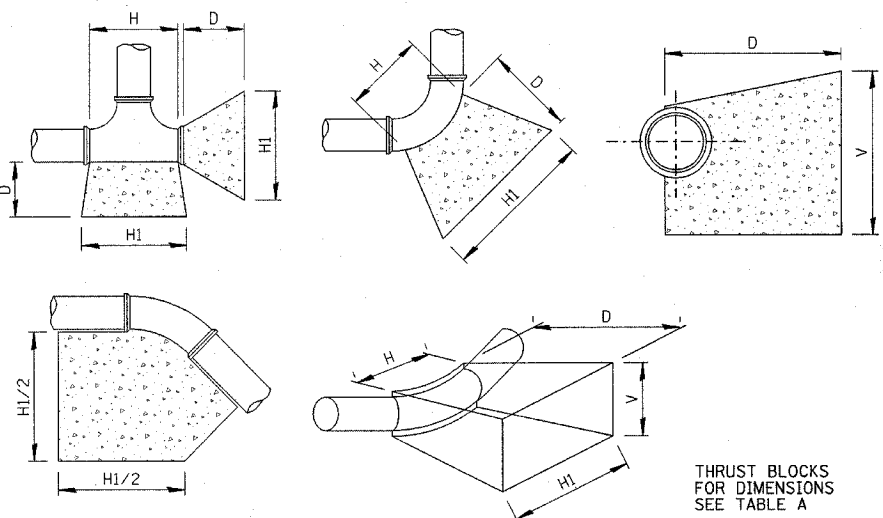


F.A.U. RTE.	SECTION	COUNTY	TOTAL SHEETS	SHEET NO.
1487	66R	DUPAGE	412	177
STA. 23+00.00		TO STA. 144+00.00		
FED. ROAD DIST. NO.	ILLINOIS	FED. AID PROJECT		
CONTRACT NO. 62376				



- NOTE:**
1. OMIT GRANULAR CRADLE FOR PROPOSED WATERMAIN.
 2. PLACE 1.0' OF CLASS IV MATERIAL (PER STANDARD WATER AND SEWER SPECIFICATIONS) OVER THE LENGTH OF THE CASING PIPE AND COMPACT TO 95% OF STANDARD PROCTOR MAXIMUM DENSITY.
 3. PROVIDE ADEQUATE SUPPORT FOR EXISTING SEWER LINE TO PREVENT DAMAGE DUE TO SETTLEMENT.
 4. PROVIDE 4" MINIMUM OF CA-6 BEDDING FOR PROPOSED PIPE CASING.

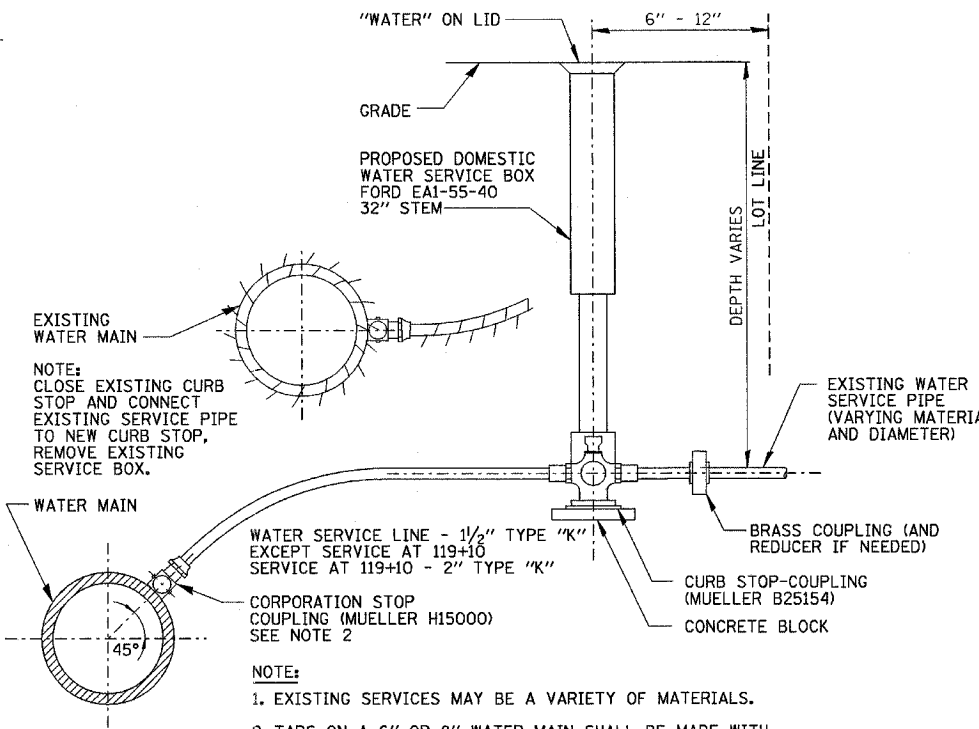
PROPOSED WATERMAIN BELOW EXISTING SEWER
N.T.S.



SIZE OF PIPE	TAPPING TEES, SLEEVES AND PLUGS					90° BENDS					45° BENDS OR LESS				
	H1	H	V	D	C. FT.	H1	H	V	D	C. FT.	H1	H	V	D	C. FT.
12"	54"	30"	24"	24"	13.40	54"	32"	36"	36"	18.15	42"	18"	24"	24"	9.60
8"	36"	18"	18"	18"	5.05	39"	18"	24"	18"	7.50	30"	11"	18"	18"	3.95
6"	24"	16"	18"	18"	3.50	30"	16"	18"	18"	4.05	24"	10"	16"	18"	3.20
4"	20"	13"	15"	15"	2.15	24"	12"	13"	13"	1.75	20"	8"	12"	12"	1.20

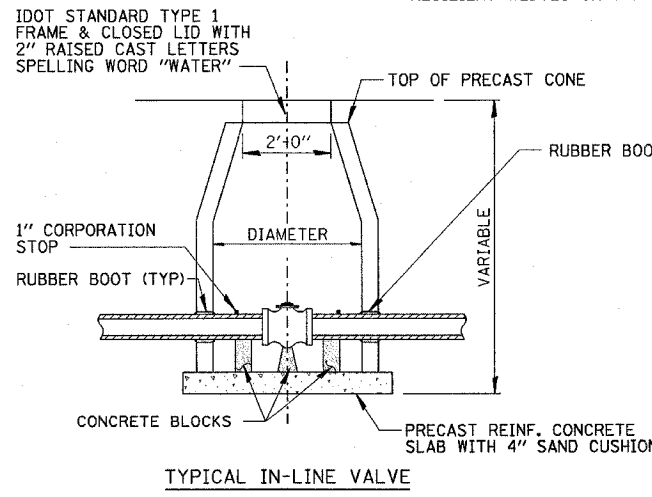
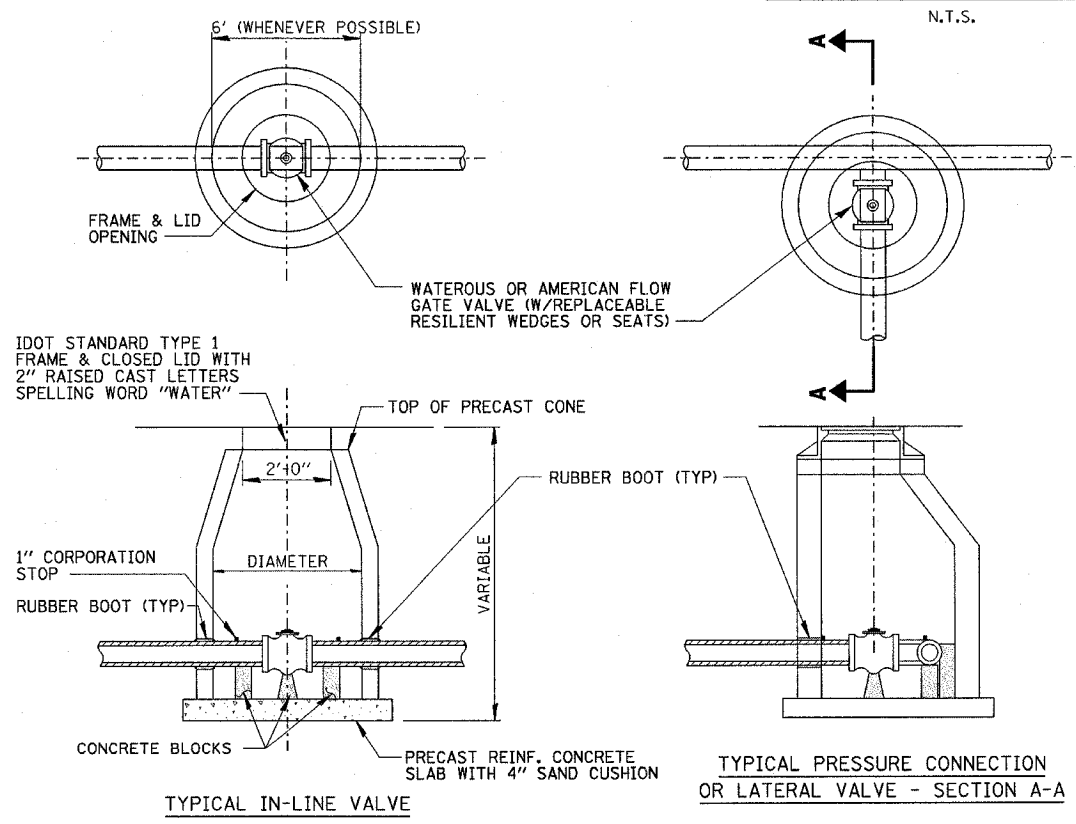
WATERMAIN THRUST BLOCKING - TABLE A
N.T.S.

NOTE: THRUST BLOCKING TO BE INSTALLED AT ALL HORIZONTAL AND VERTICAL BENDS, CAPS, VALVES, HYDRANTS AND AT LOCATIONS DIRECTED BY ENGINEER. THRUST BLOCK TO BE PRE-CAST PORTLAND CEMENT CONCRETE, PLACED BETWEEN SOLID GROUND AND FITTING, AND SHALL BE ANCHORED IN SUCH A MANNER THAT PIPE AND FITTING WILL BE ACCESSIBLE FOR REPAIR. ALL ENDS OD 1 1/4" OR MORE, ALL TEES AND ALL PLUGS SHALL BE PROTECTED AS SHOWN. WHERE CONDITIONS PREVENT THE USE OF CONCRETE THRUST BLOCKS, RESTRAINED JOINTS OF A TYPE APPROVED BY THE ENGINEER MAY BE USED.



- NOTE:**
1. CLOSE EXISTING CURB STOP AND CONNECT EXISTING SERVICE PIPE TO NEW CURB STOP, REMOVE EXISTING SERVICE BOX.
- NOTE:**
1. EXISTING SERVICES MAY BE A VARIETY OF MATERIALS.
 2. TAPS ON A 6" OR 8" WATER MAIN SHALL BE MADE WITH A 8"x15" STAINLESS STEEL FULL CIRCLE SLEEVE WITH TAP TO BE APPROVED BY THE VILLAGE. ALL WATER SERVICE CONNECTIONS TO THE PROPOSED 12" WATER MAIN SHALL BE DIRECT TAP".

TYPICAL WATER SERVICE CONNECTION
N.T.S.

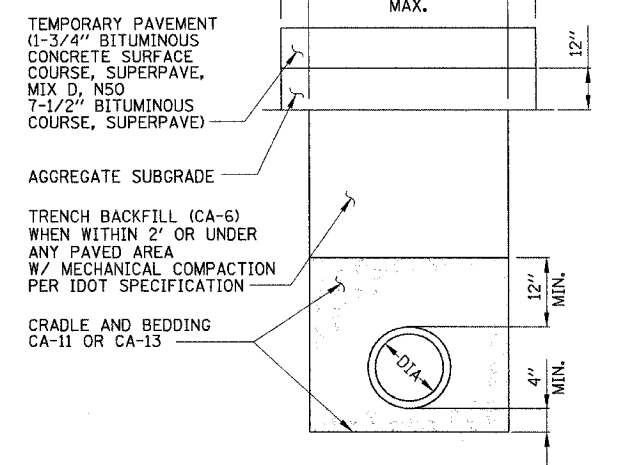


TYPICAL IN-LINE VALVE

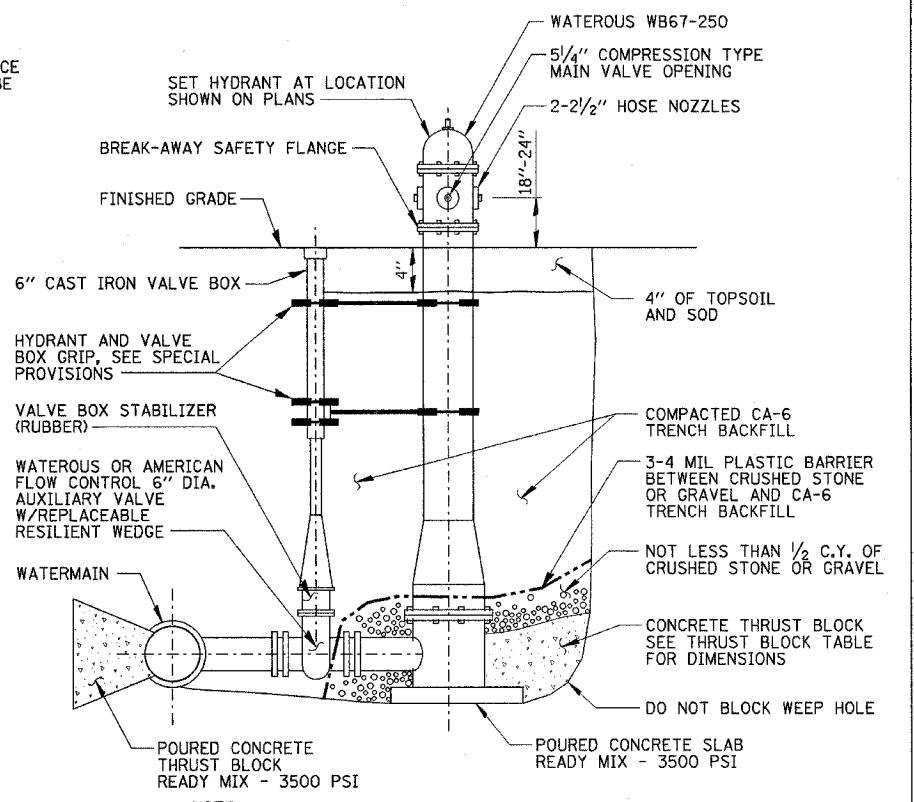
TYPICAL PRESSURE CONNECTION OR LATERAL VALVE - SECTION A-A
N.T.S.

VALVE VAULT, TYPE "A"
N.T.S.

NOTE: THE CONTRACT UNIT PRICE FOR VALVE VAULTS TYPE A SHALL INCLUDE THE FRAME AND CLOSED LID, AND COMPACTED TRENCH BACKFILL. PRECAST REINFORCED CONCRETE RISERS ARE TO BE LAID IN MASTIC JOINTS WITH FLUSH JOINTS, FURNISHING AND INSTALLING SAND CUSHION TO BE INCLUDED IN THE CONTRACT UNIT PRICE FOR VALVE VAULT, TYPE A (IDOT STD 602501).



TYPICAL TRENCH DETAIL - WATERMAIN
N.T.S.



- NOTE:**
1. HEIGHT FROM FINISHED GRADE TO WATERMAIN ELEVATION VARIES.
 2. CONCRETE BASE AND BLOCKING MATERIAL SHALL NOT BLOCK NOR OBSTRUCT HYDRANT DRAIN AS SHOWN IN AWWA MANUAL M17.

FIRE HYDRANT
N.T.S.

REVISIONS	
NAME	DATE

ILLINOIS DEPARTMENT OF TRANSPORTATION

CONSTRUCTION DETAILS
MAPLE AVENUE / CHICAGO AVENUE

SCALE: NONE
DATE: 22-NOV-2004
DRAWN BY: E.D.
CHECKED BY: C.L.

Illinois Firm Registration No. 04-00533

Stanley Consultants Inc.
850 West Higgins Road, Suite 130
Chicago, Illinois 60630-2801
www.stanleygrp.com