

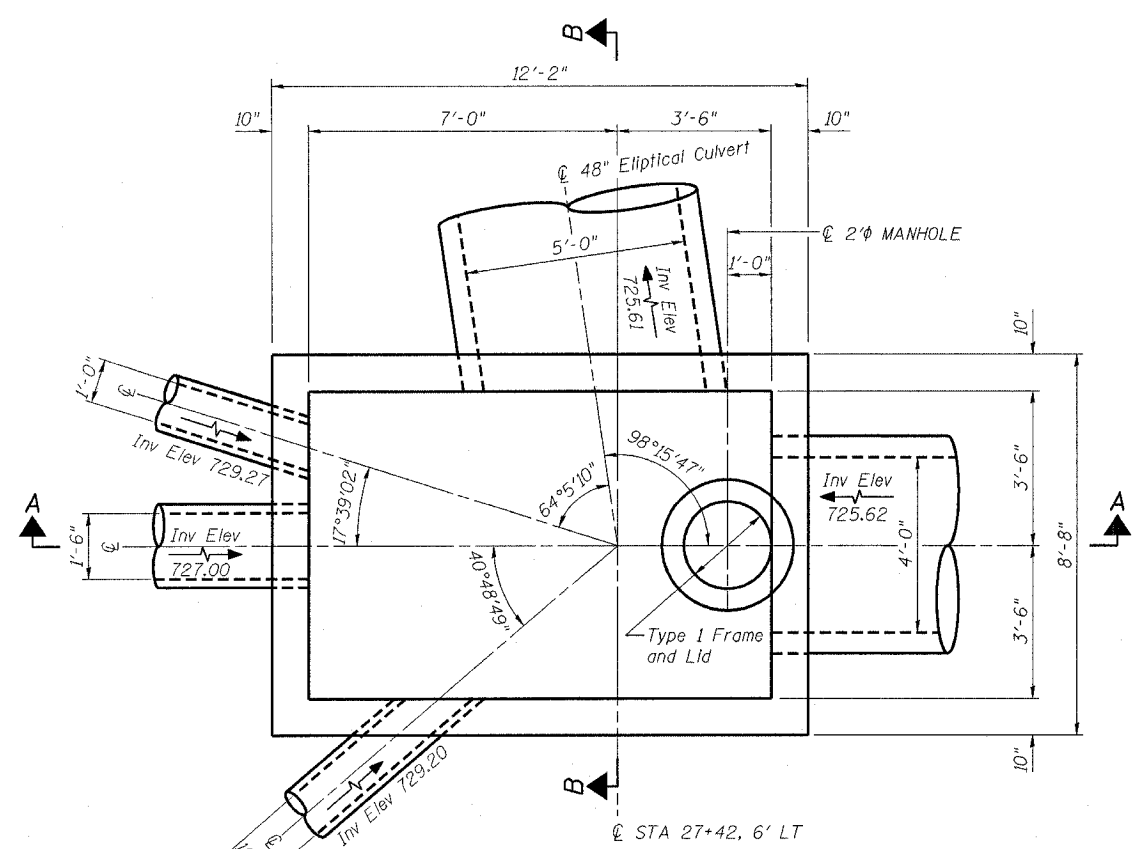
STATE OF ILLINOIS
DEPARTMENT OF TRANSPORTATION

ROUTE NO.	SECTION	COUNTY	SHEET NO.	SHEET NO.
1487	66R	DUPAGE	4/2	179
FED. ROAD DIST. NO. 7	ILLINOIS	FED. AID PROJECT-		

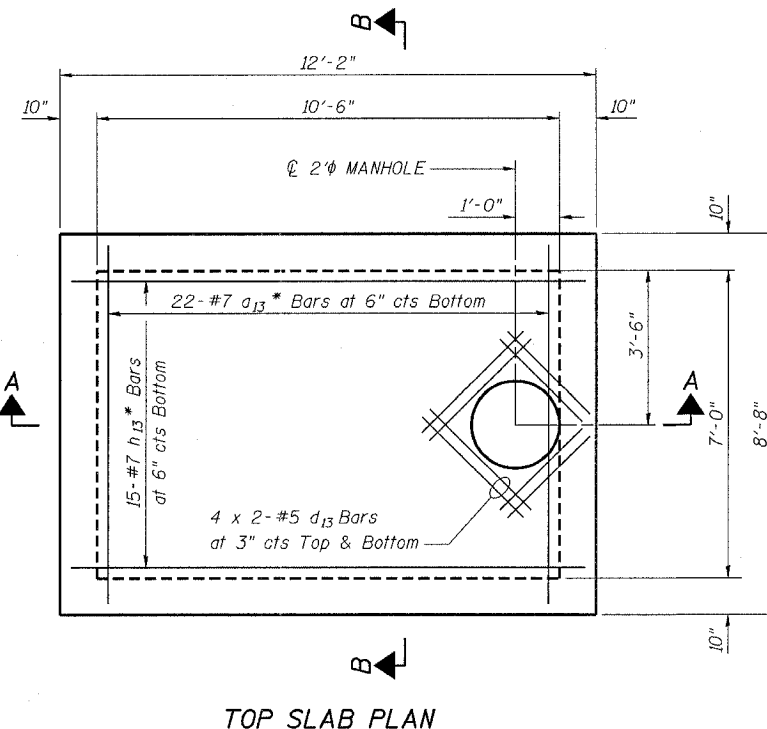
CONTRACT NO. 62376

BILL OF MATERIAL

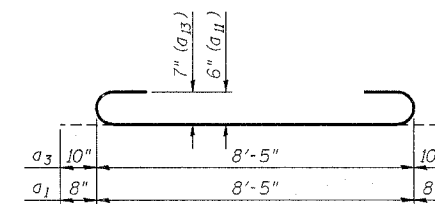
Bar	No.	Size	Length	Shape
a ₁₁	11	#6	9'-9"	
a ₁₂	11	#5	8'-5"	
a ₁₃	22	#7	10'-1"	
h ₁₁	8	#6	11'-11"	
h ₁₂	8	#5	11'-11"	
h ₁₃	15	#7	11'-11"	
h ₁₄	14	#5	11'-11"	
h ₁₅	14	#5	8'-5"	
v ₁₁	52	#6	7'-7"	
d ₁₁	32	#5	7'-0"	
d ₁₂	48	#5	3'-11"	
d ₁₃	16	#5	4'-0"	
Concrete Structures			Cu yd	13.2
Reinforcement Bars			Lbs	2,710



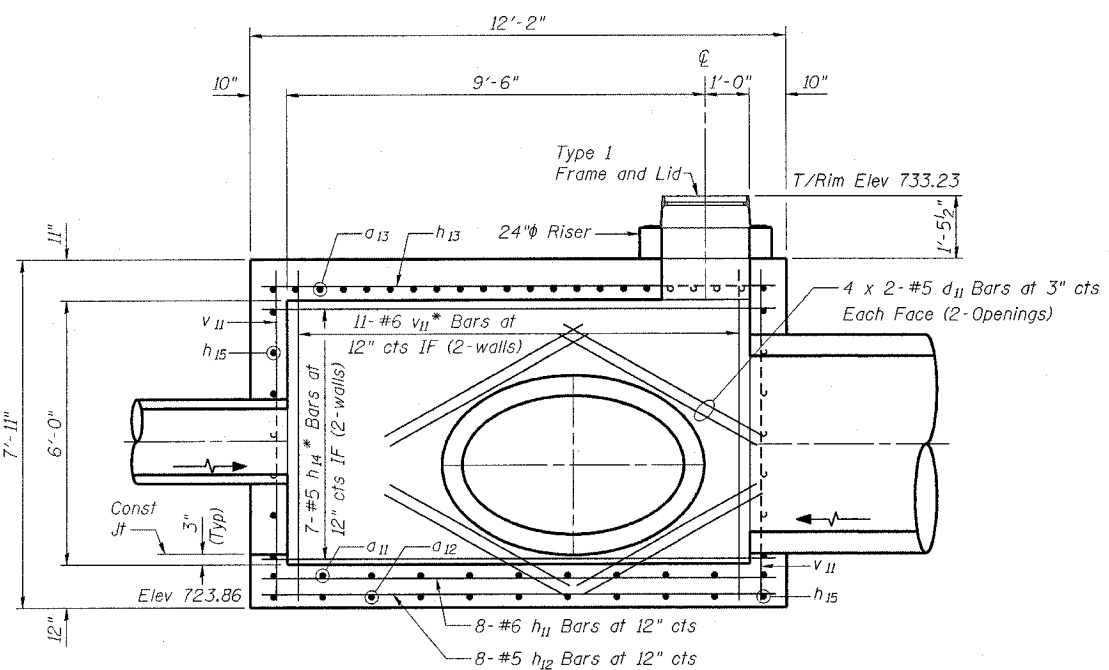
PLAN



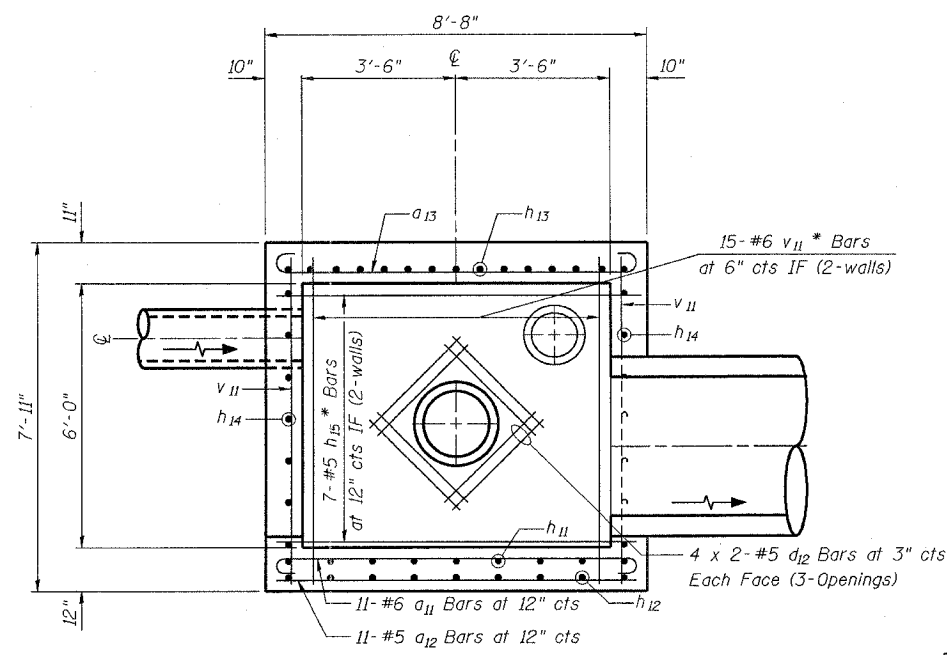
TOP SLAB PLAN



BAR a₁₁ & a₁₃



SECTION A-A



SECTION B-B

Notes:

- See Drainage & Utility drawings for location and culvert sizes.
 - Fillet Concrete in the bottom of Junction Chamber shall be provided for positive drainage as directed by the Engineer. Cost of the Fillet Concrete is included in the cost of Junction Chamber No. 9.
- * Cut bars at opening as required.

DESIGNED	BG
CHECKED	NLV
DRAWN	RTT
CHECKED	DSE
DATE	NOV 30, 2004

REVISIONS	
NAME	DATE

Illinois Firm Registration No. 04-00533

Stanley Consultants INC.
850 West Higgins Road, Suite 130
Chicago, Illinois 60638-2862
www.stanleygroup.com

ILLINOIS DEPARTMENT OF TRANSPORTATION

**JUNCTION CHAMBER NO. 9
AT STA 27 + 42.6' LT
MAPLE AVENUE / CHICAGO AVENUE
SHEET 2 OF 2**

SCALE: 1/2" = 1'-0"
DATE: 22-NOV-2004

DRAWN BY: RTT
CHECKED BY: BG