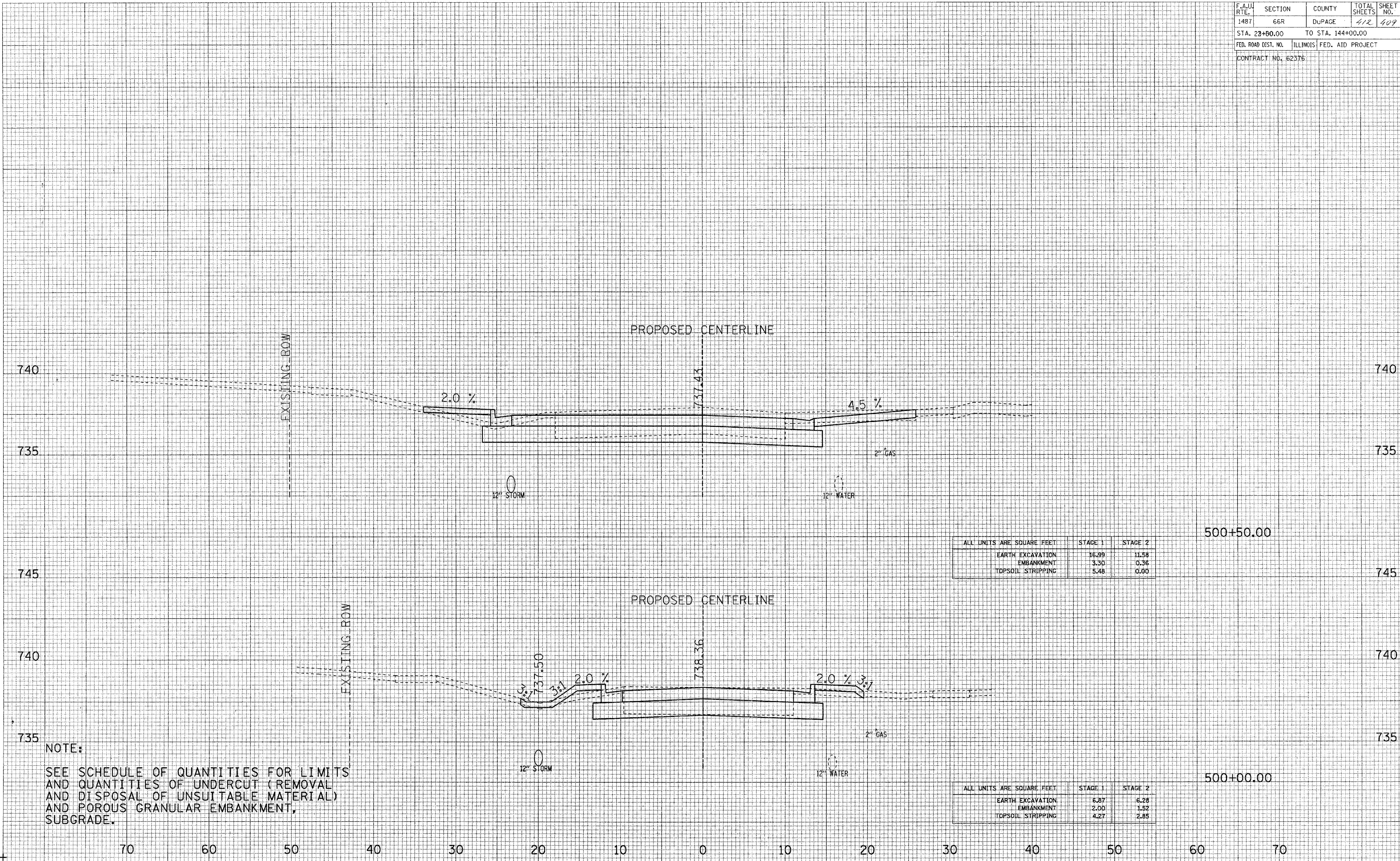


F.A.U. RTE.	SECTION	COUNTY	TOTAL SHEETS	SHEET NO.
1487	66R	DUPAGE	412	409
STA. 23+60.00		TO STA. 144+00.00		
FED. ROAD DIST. NO.		ILLINOIS FED. AID PROJECT		
CONTRACT NO. 62376				



ALL UNITS ARE SQUARE FEET	STAGE 1	STAGE 2
EARTH EXCAVATION	16.99	11.58
EMBANKMENT	3.30	0.36
TOPSOIL STRIPPING	5.48	0.00

ALL UNITS ARE SQUARE FEET	STAGE 1	STAGE 2
EARTH EXCAVATION	6.87	6.28
EMBANKMENT	2.00	1.52
TOPSOIL STRIPPING	4.27	2.85

NOTE:
SEE SCHEDULE OF QUANTITIES FOR LIMITS AND QUANTITIES OF UNDERCUT (REMOVAL AND DISPOSAL OF UNSUITABLE MATERIAL) AND POROUS GRANULAR EMBANKMENT, SUBGRADE.

NORFOLK AVENUE/COE ROAD CROSS SECTIONS