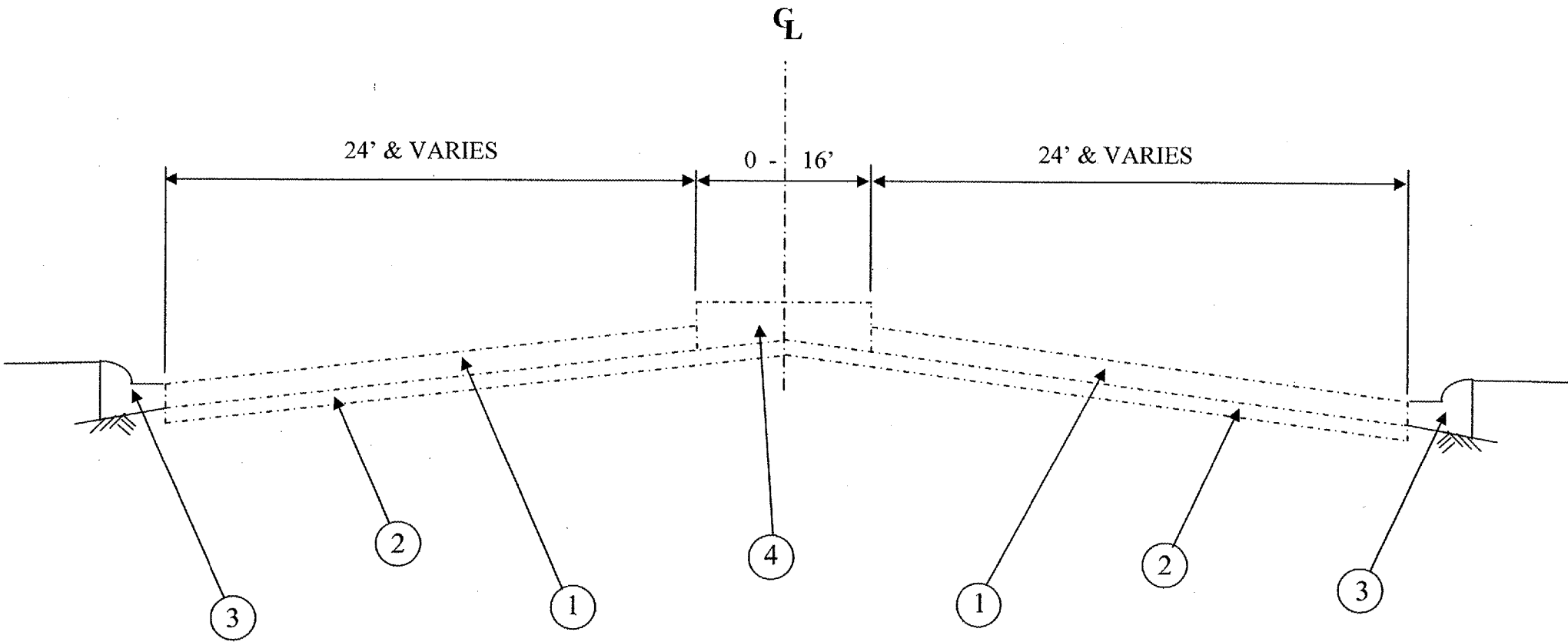


ROUTE	SECTION	COUNTY	TOTAL SHEETS	SHEET NUMBER
FAP 305	1518 PCC-PC-2	COOK	17	5

CONTRACT 62457

WILLOW RD.
EXISTING AND PROPOSED
TYPICAL SECTION



1. P.C.C. PAVEMENT, 10"
2. STABILIZED SUB-BASE, 6"
3. CONCRETE COMBINATION CURB AND GUTTER, TYPE B-6.24
4. RAISED CONCRET MEDIAN (NON-TRAVERSABLE FROM IL 43 TO SHERMER RD. AND AT PHINGSTEN RD.; MOUNTABLE FROM SHERMER RD. TO PHINGSTEN RD.) OR TURN LANE

ILLINOIS DEPARTMENT OF TRANSPORTATION

WILLOW ROAD
TYPICAL SECTIONS