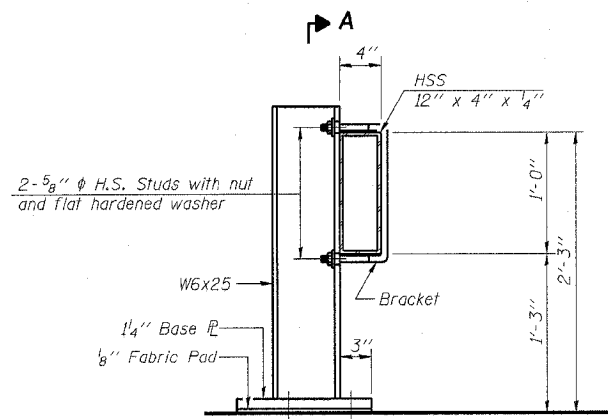
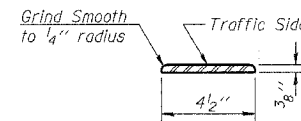


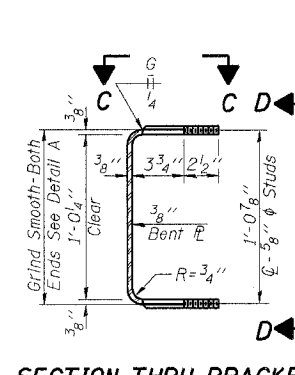
SECTION A-A



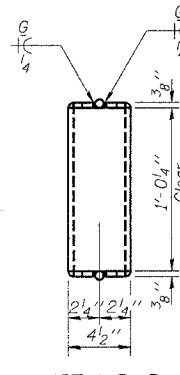
SECTION AT RAIL POST



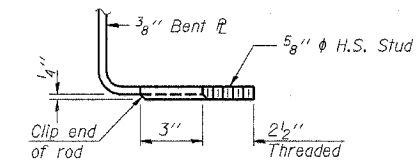
DETAIL A



SECTION THRU BRACKET



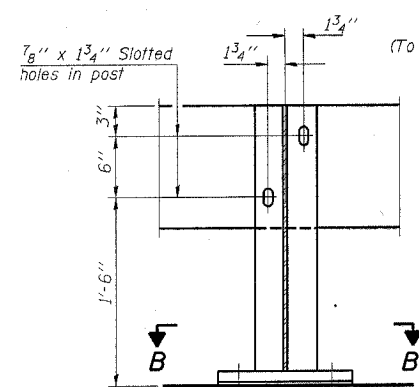
VIEW D-D



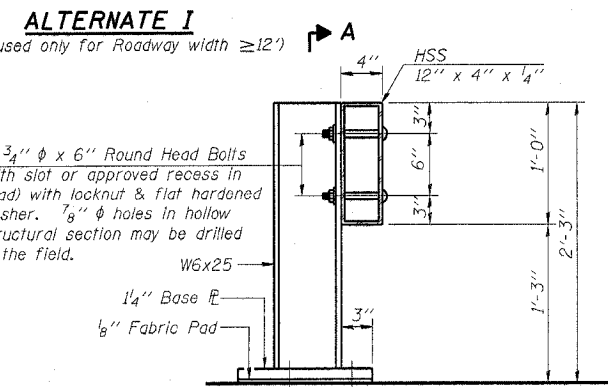
VIEW E-E

NOTES

Hollow structural sections shall conform to the requirements of ASTM designation A 500 Grade B Structural Steel Tubing.
 All other steel shapes and plates shall conform to the requirements of AASHTO M 270 Grade 36 except posts and brackets shall conform to AASHTO M 270, Grade 50.
 Bolts, cap screws, and nuts shall conform to the requirements of ASTM designation A 307 except for high strength bolts, threaded rods, studs, nuts and washers noted which shall conform to AASHTO M 164.
 The bridge rail shall receive one shop coat of a steel prime paint.
 The 1" ϕ high strength bolts or threaded rods used to connect the railposts shall be tightened according to Article 505.04(F)(2) of the Standard Specifications.
 Temporary Bridge Rail shall be according to Section 514 of the Standard Specifications, except as noted, and will be paid for at the contract unit price per foot for Temporary Bridge Rail.
 See sheet of for Rail Post spacing.
 The contact surfaces between post flange, rail and inside face of bracket for Alternate I shall be free of all lubricants.
 The nut for 5/8" ϕ high strength studs used in Alternate I to connect bracket to post shall be tightened to a snug fit and given an additional one half turn.



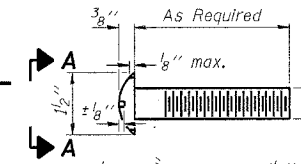
SECTION A-A



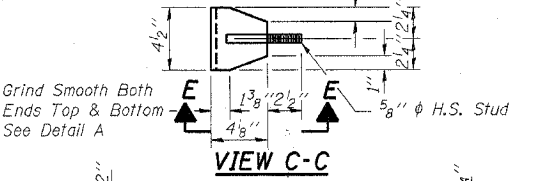
SECTION AT RAIL POST

ALTERNATE I
 (To be used only for Roadway width $\geq 12'$)

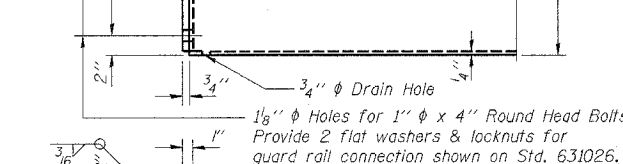
2-3/4" ϕ x 6" Round Head Bolts (With slot or approved recess in head) with locknut & flat hardened washer. 7/8" ϕ holes in hollow structural section may be drilled in the field.



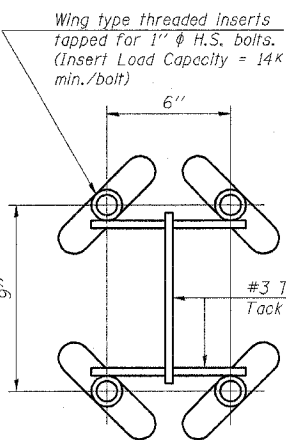
VIEW A-A ROUND HEAD BOLT



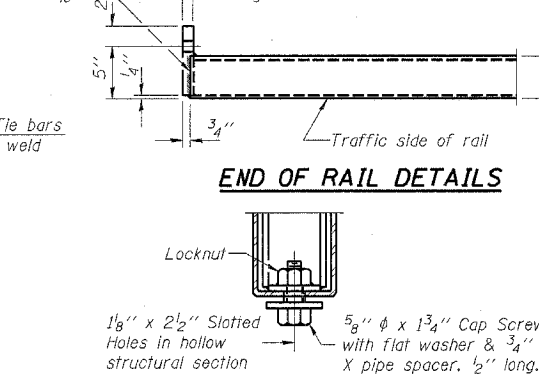
VIEW C-C



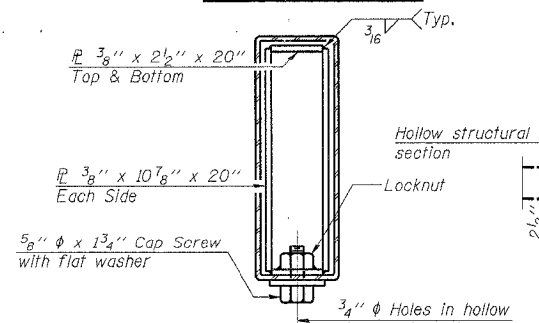
END OF RAIL DETAILS



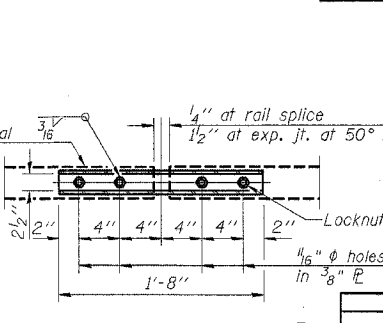
INSERT DETAIL



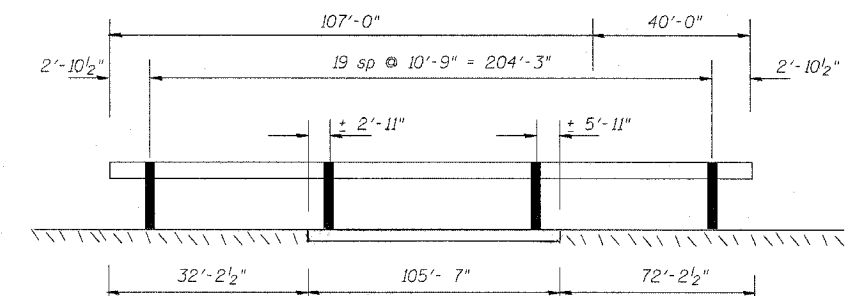
RAIL SPLICE CONNECTION AT EXPANSION JT.



SECTION AT RAIL SPLICE



PLAN-BOTT. SPLICE TYPICAL



TEMPORARY BRIDGE RAIL POST SPACING

SEE SHT 21 OF 36

BILL OF MATERIAL

Item	Unit	Quantity
Temporary Bridge Rail	Foot	420

QUANTITY INCLUDED IN THE ROADWAY PLANS.

REVISIONS	DATE

ILLINOIS DEPARTMENT OF TRANSPORTATION
LOC 1
TEMPORARY BRIDGE RAIL

SCALE: VERT. HORIZ.
 DATE
 DRAWN BY
 CHECKED BY

PLOT DATE = 4/18/2005
 PLOT SCALE = 49.934 / IN.
 USER NAME = rjns000002