

INDEX OF SHEETS

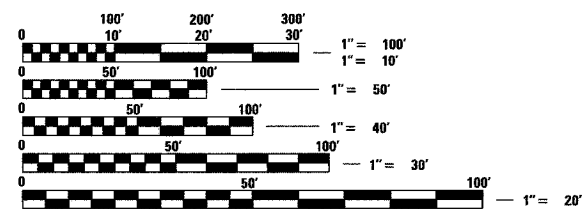
FOR INDEX OF SHEETS, SEE SHEET NO. 2

PROJECT LOCATED IN THE CITY OF CHICAGO

| DAN RYAN EXPRESSWAY: | ADT (2010) | DESIGN SPEED | POSTED SPEED |
|----------------------------------|------------|--------------|--------------|
| NB I-94 (DAN RYAN) | 151,800 | 60 MPH | 55 MPH |
| NB I-94 (BISHOP FORD) | 94,200 | 60 MPH | 55 MPH |
| NB I-57 | 57,300 | 60 MPH | 55 MPH |
| NB HALSTED STREET ENTRANCE RAMP | 22,100 | 45 MPH | 40 MPH |
| NB MICHIGAN AVENUE ENTRANCE RAMP | 8,900 | 45 MPH | 40 MPH |
| NB 95TH STREET ENTRANCE RAMP | 10,500 | 45 MPH | 40 MPH |
| NB 87TH STREET EXIT RAMP | 11,600 | 45 MPH | 40 MPH |
| NB 87TH STREET ENTRANCE RAMP | 14,300 | 45 MPH | 40 MPH |
| NB 79TH STREET C-D ENTRANCE RAMP | 9,000 | 45 MPH | 40 MPH |
| NB 76TH STREET C-D EXIT RAMP | 7,200 | 45 MPH | 40 MPH |
| NB 75TH STREET C-D ENTRANCE RAMP | 11,300 | 45 MPH | 40 MPH |
| NB 71ST STREET C-D EXIT RAMP | 6,600 | 45 MPH | 40 MPH |
| WB CROSS CONNECTOR RAMP | 24,900 | 50 MPH | 50 MPH |

DESCRIPTION OF PROJECT

- S.N. 016-W943: REMOVE AND REPLACE EXISTING WALL WITH SOLDIER PILE RETAINING WALL
- S.N. 016-W944: NEW SOLDIER PILE RETAINING WALL
- S.N. 016-W945: NEW SOLDIER PILE RETAINING WALL
- S.N. 016-W953: NEW SOLDIER PILE RETAINING WALL
- S.N. 016-W954: NEW SOLDIER PILE RETAINING WALL
- S.N. 016-W955: NEW SOLDIER PILE RETAINING WALL
- S.N. 016-W956: NEW SOLDIER PILE RETAINING WALL
- S.N. 016-W957: NEW SOLDIER PILE RETAINING WALL
- S.N. 016-W960: NEW SOLDIER PILE RETAINING WALL
- S.N. 016-W961: NEW SOLDIER PILE RETAINING WALL
- S.N. 016-W975: REMOVE AND REPLACE EXISTING WALL WITH SPREAD FOOTING RETAINING WALL
- S.N. 016-W976: NEW SOLDIER PILE RETAINING WALL



FULL SIZE PLANS HAVE BEEN PREPARED USING STANDARD ENGINEERING SCALES; REDUCED SIZED PLANS WILL NOT CONFORM TO STANDARD SCALES. IN MAKING MEASUREMENTS ON REDUCED PLANS, THE ABOVE SCALES MAY BE USED

DIGGER:
CHICAGO UTILITY ALERT NETWORK
(312) 744-7000

CTA CONTACT:
MARVIN A. WATSON,
GENERAL MANAGER, CONSTRUCTION
(312) 681-3860

CONTRACT NO. 62694

DISTRICT ONE DESIGN / PROJECT MANAGER:
BRIAN KUTTAB (847) 705 - 4431

**STATE OF ILLINOIS
DEPARTMENT OF TRANSPORTATION
DIVISION OF HIGHWAYS**

PROPOSED HIGHWAY PLANS

**F.A.I. ROUTE 94 (DAN RYAN EXPRESSWAY)
SECTION (1516.1, 1717 & 1818) R-8
71ST STREET TO I-57 (NB RAMPS, C-D'S, AND RETAINING WALLS)
RECONSTRUCTION**

PROJECT: ACIM-094-3(394)060

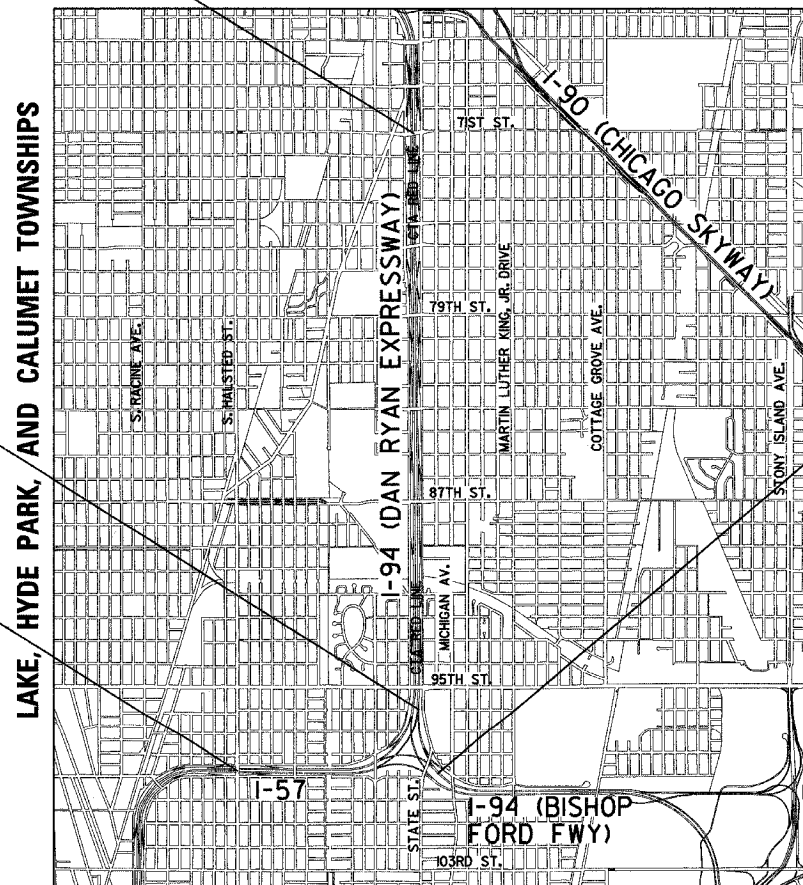
VOL. 1 OF 2

**COOK COUNTY
C-91-073-04
R. 14 E.**

F.A.I. 94 (RYAN) PROJECT LIMIT
STA. 2362+07.18 (NB I-94)

F.A.I. 94 (RYAN) STA. 2200+00.00 =
F.A.I. 94 (FORD) STA. 2045+78.53 =
F.A.I. 57 STA. 255+32.25

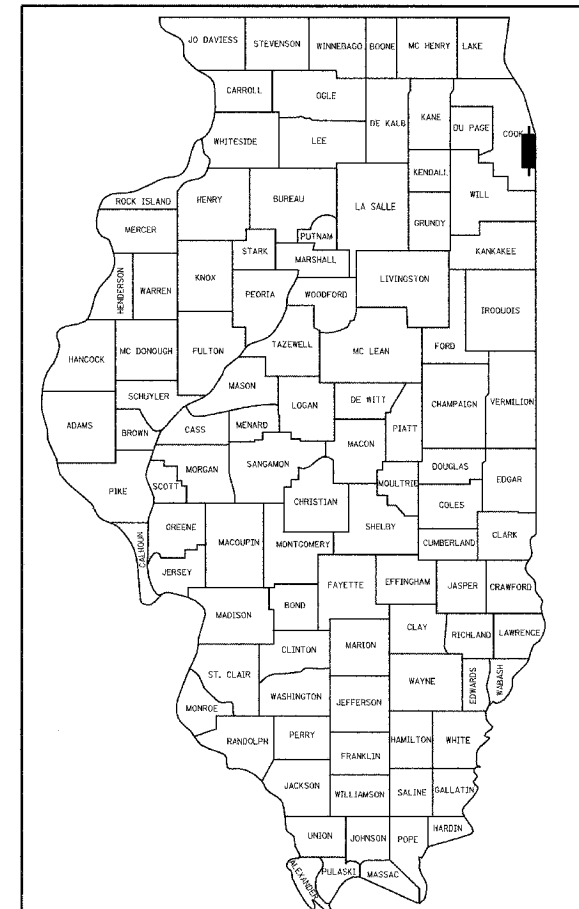
F.A.I. 57 PROJECT LIMIT
STA. 192+89.35 (NB I-57)



LOCATION MAP

GROSS LENGTH OF PROJECT = 24730.4 FT. = 4.684 MI.
NET LENGTH OF PROJECT = 24730.4 FT. = 4.684 MI.

| F.A.I. RTE. | SECTION | COUNTY | TOTAL SHEETS | SHEET NO. |
|---------------------|---------|---------------------------|--------------|-----------|
| 94 | | COOK | 808 | 1 |
| FED. ROAD DIST. NO. | | ILLINOIS FED. AID PROJECT | | |
| D-91-421-01 | | (1516.1, 1717 & 1818) R-8 | 62694 | |



LOCATION OF SECTION INDICATED THUS: - [black rectangle] -

STATE OF ILLINOIS
DEPARTMENT OF TRANSPORTATION
DIVISION OF HIGHWAYS

SUBMITTED March 29, 20 05

Dean A. Klesling
DISTRICT ENGINEER

May 13, 20 05

Mike Hine
ENGINEER OF DESIGN AND ENVIRONMENT

May 13, 20 05

Victor Moore
DIRECTOR, DIVISION OF HIGHWAYS

F.A.I. 94 (FORD) PROJECT LIMIT
STA. 2022+98.19 (NB I-94)



Signed *Dean A. Klesling*
Dean A. Klesling, P.E., Lic. No. 32957
Expires 11-30-2005

Excludes SUE drawings 267-284A

CONTRACT 17A



Signed *Phillip D. Frey*
Phillip D. Frey, S.E., Il. Lic. No. 081-004826
Expires 11-30-2006

For Structural Drawings 401-666



Signed *Thomas Mikolajewski*
Thomas Mikolajewski, P.E., Il. Lic. No. 062-056151
Expires 11-30-2005

For Electrical Drawings 338-397

TYLIN INTERNATIONAL
PRINTED BY THE AUTHORITY OF THE STATE OF ILLINOIS