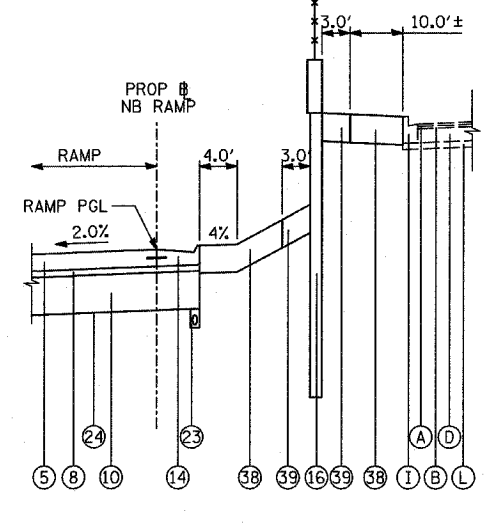
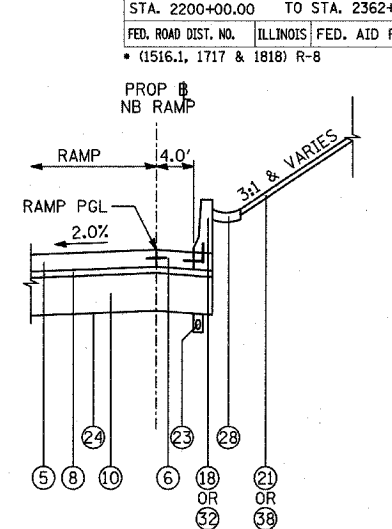


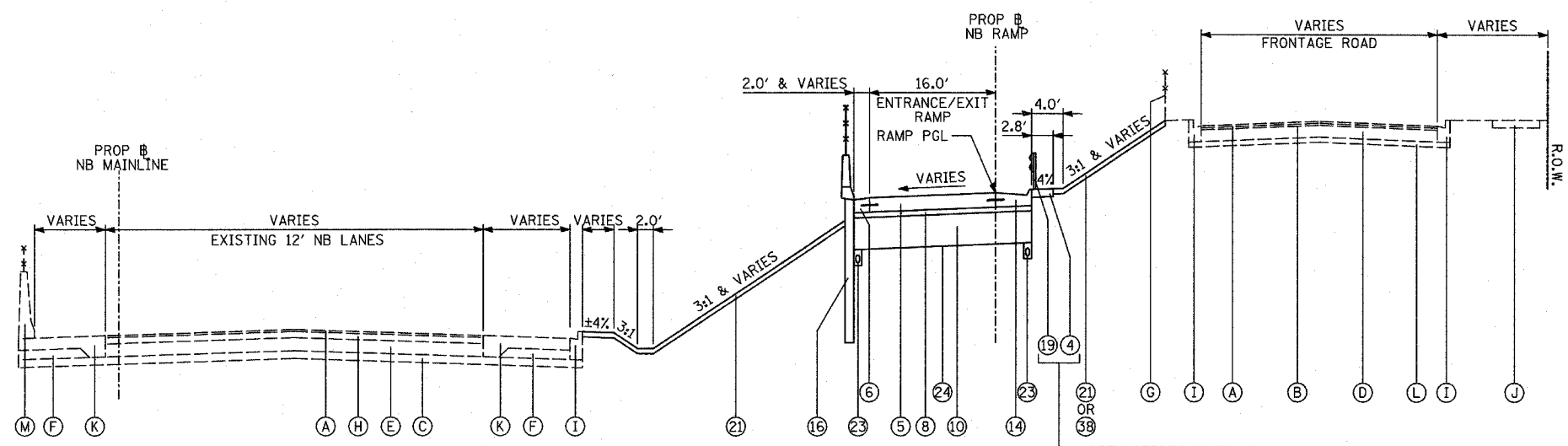
**PROPOSED NB ENTRANCE/EXIT RAMP**  
 PROPOSED RAMP WITH RETAINING WALL ON RIGHT SIDE  
 (ADJACENT TO BACK OF CURB)



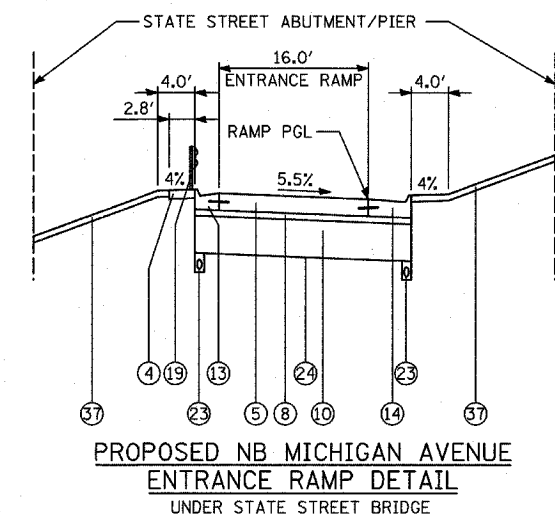
**PROPOSED NB ENTRANCE/EXIT RAMP DETAIL**  
 PROPOSED RAMP WITH RETAINING WALL ON RIGHT SIDE  
 (OFFSET FROM BACK OF CURB)



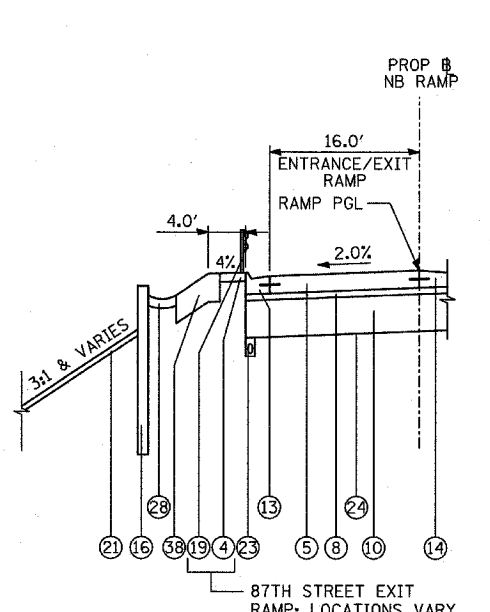
**PROPOSED NB ENTRANCE/EXIT RAMP DETAIL**  
 PROPOSED RAMP WITH CONCRETE BARRIER ON RIGHT SIDE  
 (ADJACENT TO BACK OF SHOULDER)



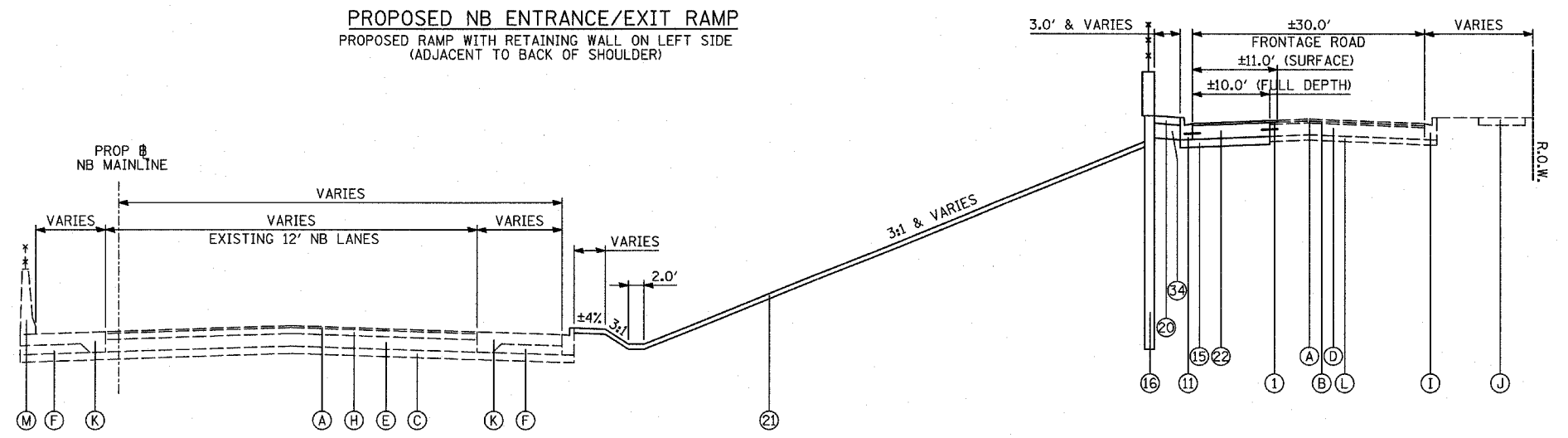
**PROPOSED NB ENTRANCE/EXIT RAMP**  
 PROPOSED RAMP WITH RETAINING WALL ON LEFT SIDE  
 (ADJACENT TO BACK OF SHOULDER)



**PROPOSED NB MICHIGAN AVENUE  
 ENTRANCE RAMP DETAIL**  
 UNDER STATE STREET BRIDGE



**PROPOSED NB ENTRANCE/EXIT RAMP DETAIL**  
 PROPOSED RAMP WITH RETAINING WALL ON LEFT SIDE  
 (OFFSET FROM BACK OF CURB)



**PROPOSED RETAINING WALL ADJACENT TO NB FRONTAGE ROAD**  
 NO PROPOSED RAMP WORK

**TYLIN INTERNATIONAL**

REVISIONS	
NAME	DATE

ILLINOIS DEPARTMENT OF TRANSPORTATION  
 F.A.I. 94 (DAN RYAN EXPRESSWAY)

**PROPOSED TYPICAL SECTIONS  
 NB ENTRANCE/EXIT RAMP  
 (SHEET 2 OF 5)**

SCALE: NONE  
 DATE: MARCH 18, 2005  
 DRAWN BY: MPG  
 CHECKED BY: JPM

03/25/2005 10:27:40 AM