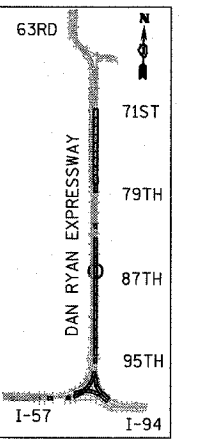
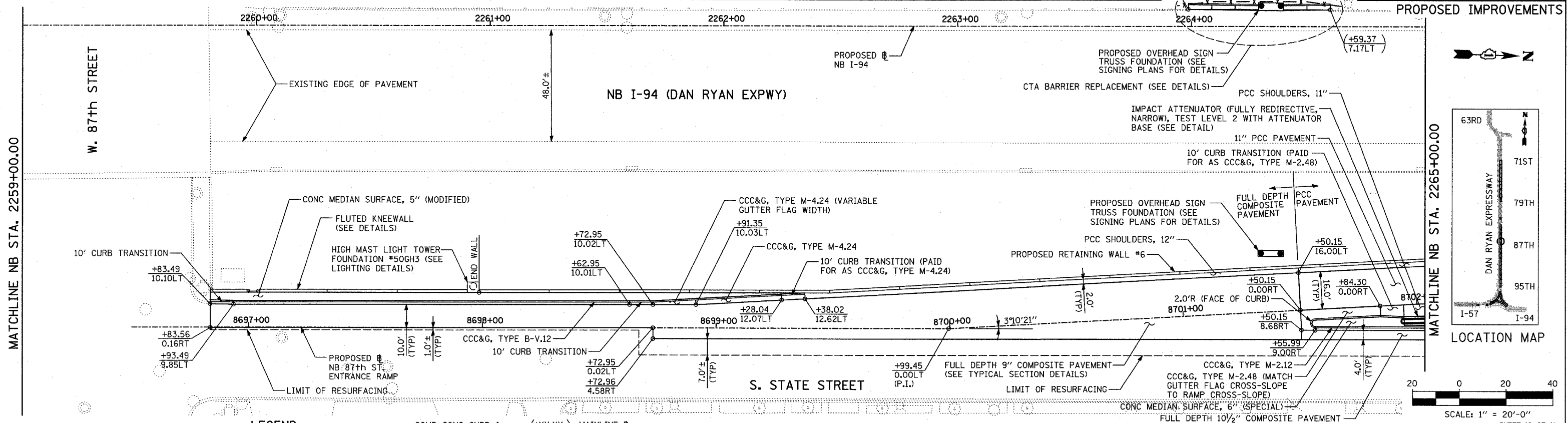
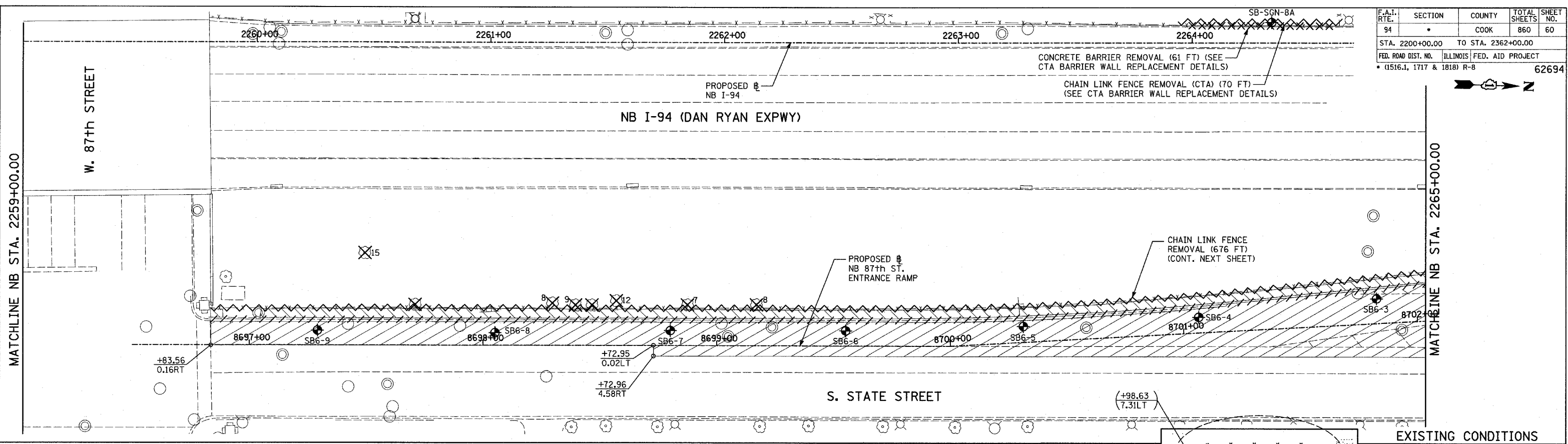


F.A.I. RTE. 94	SECTION	COUNTY COOK	TOTAL SHEETS 860	SHEET NO. 60
STA. 2200+00.00		TO STA. 2362+00.00		
FED. ROAD DIST. NO.		ILLINOIS	FED. AID PROJECT	
		• (1516.1, 1717 & 1818) R-8		62694



**LEGEND:**

	PAVEMENT REMOVAL		CHAIN LINK FENCE REMOVAL		CONCRETE BARRIER/GUARDRAIL REMOVAL		TREE REMOVAL (UNITS) (NO UNIT SHOWN = 6)		LIGHT POLE FOUNDATION REMOVAL (SEE EXISTING ELECTRICAL PLANS)
	PAVED SHOULDER REMOVAL		SOIL BORING LOCATIONS						
	PAVEMENT/SHOULDER REMOVAL, SPECIAL								

**NOTES:**

- ALL STATION/OFFSET/RADIUS CALLOUTS MEASURED TO EDGE OF PAVEMENT UNLESS OTHERWISE NOTED.
- EXACT LOCATIONS OF EXISTING PIERS/ABUTMENTS TO BE FIELD VERIFIED

**REVISIONS**

NAME	DATE

ILLINOIS DEPARTMENT OF TRANSPORTATION  
**F.A.I. 94 (DAN RYAN EXPRESSWAY)**

**EXISTING AND PROPOSED PLAN  
 NB 87th STREET ENTRANCE RAMP  
 NB I-94 STA. 2259+00.00 TO 2265+00.00**

SCALE: 1"=20'  
 DATE: MARCH 18, 2005  
 DRAWN BY: MPG  
 CHECKED BY: JPM

**TYLIN INTERNATIONAL**

03/25/2005 10:05:54 AM