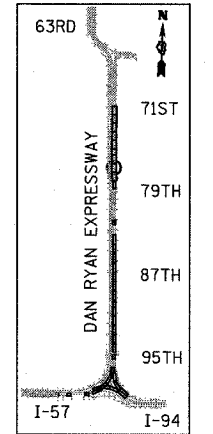
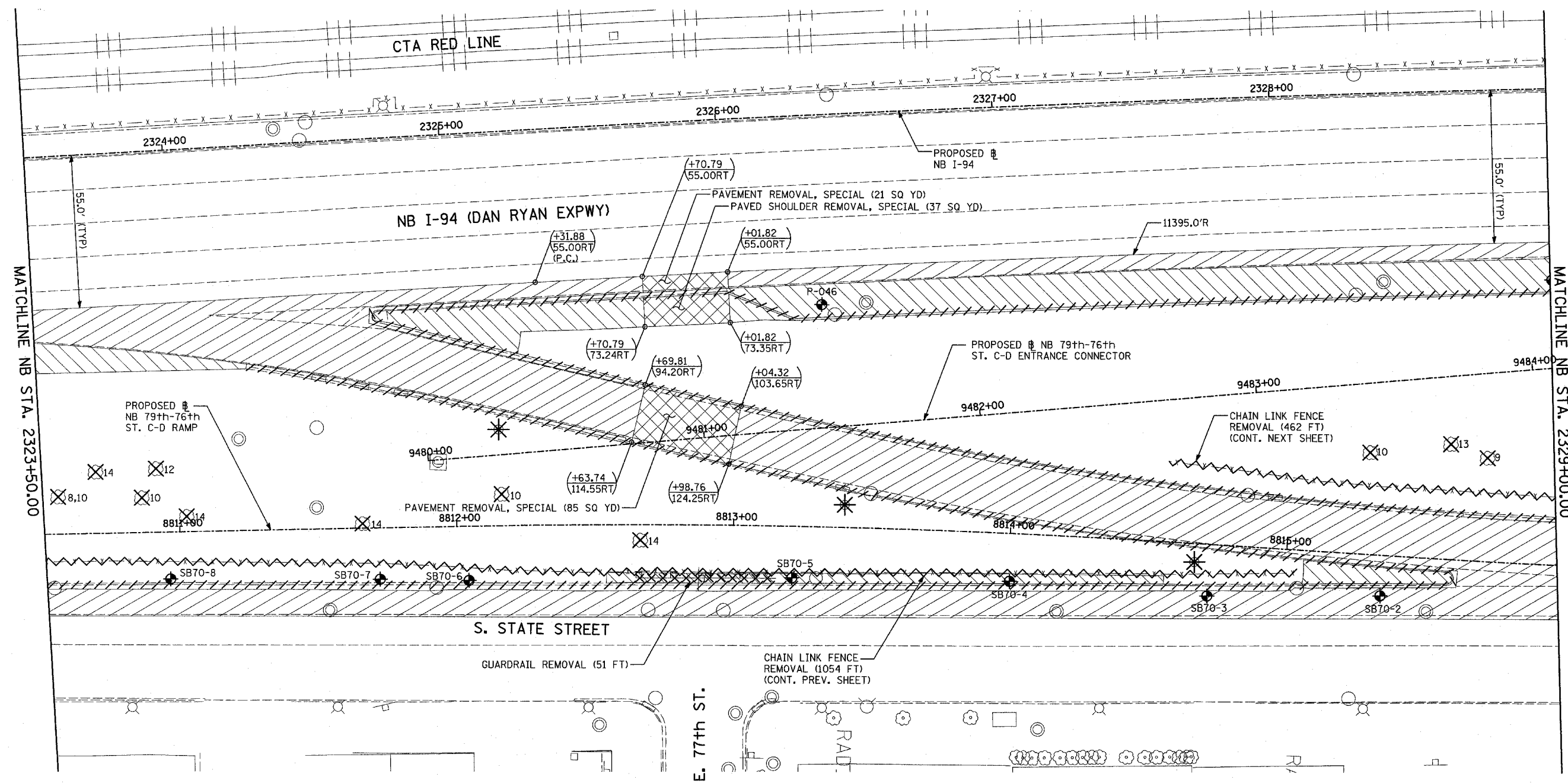
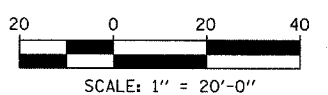


F.A.I. RTE.	SECTION	COUNTY	TOTAL SHEETS	SHEET NO.
94		COOK	860	67
STA. 2200+00.00 TO STA. 2362+00.00		FED. ROAD DIST. NO. ILLINOIS FED. AID PROJECT		
		• (1516.1, 1717 & 1818) R-8		
				62694



LOCATION MAP



LEGEND:

- PAVEMENT REMOVAL
- CHAIN LINK FENCE REMOVAL
- CONCRETE BARRIER/GUARDRAIL REMOVAL
- PAVED SHOULDER REMOVAL
- PAVEMENT/SHOULDER REMOVAL, SPECIAL
- TREE REMOVAL (UNITS) (NO UNIT SHOWN = <6)
- SOIL BORING LOCATIONS
- LIGHT POLE FOUNDATION REMOVAL (SEE EXISTING ELECTRICAL PLANS)
- MAINLINE # STATION/OFFSET
- RAMP # STATION/OFFSET

- MAINLINE # STATION/OFFSET
- RAMP # STATION/OFFSET

NOTES:

- ALL STATION/OFFSET/RADIUS CALLOUTS MEASURED TO EDGE OF PAVEMENT UNLESS OTHERWISE NOTED.
- EXACT LOCATIONS OF EXISTING PIERS/ABUTMENTS TO BE FIELD VERIFIED

REVISIONS	
NAME	DATE

ILLINOIS DEPARTMENT OF TRANSPORTATION
 F.A.I. 94 (DAN RYAN EXPRESSWAY)
EXISTING PLAN
 NB 79th TO 76th STREET C-D RAMP
 NB I-94 STA. 2323+50.00 TO 2329+00.00
 SCALE: 1"=20'
 DATE: MARCH 18, 2005
 DRAWN BY: MPG
 CHECKED BY: JPM

TYLIN INTERNATIONAL

03/25/2005 10:08:54 AM