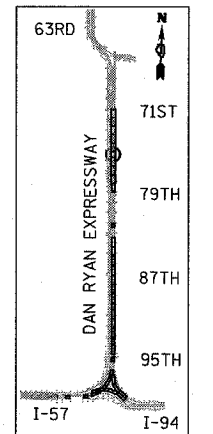
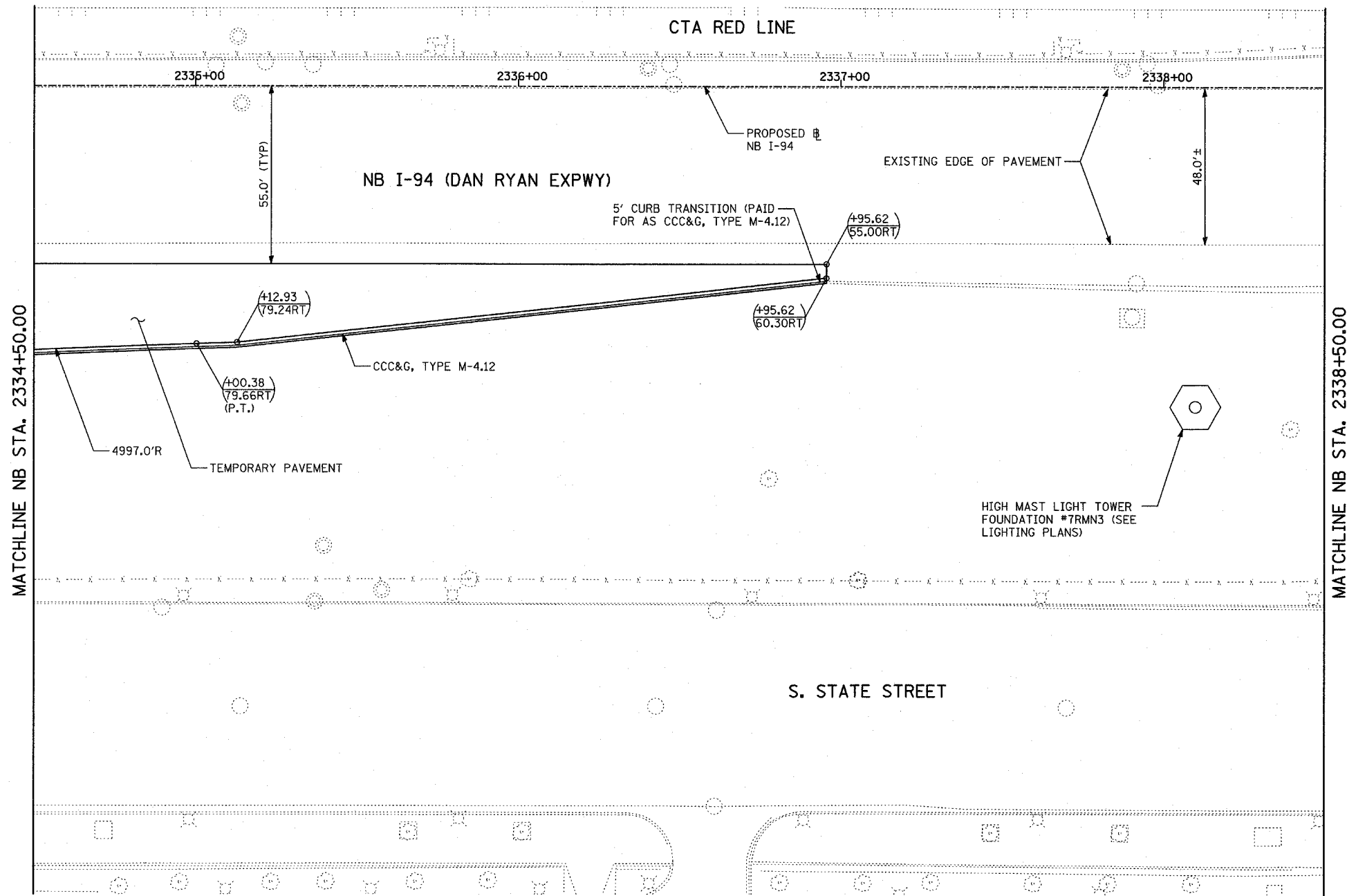
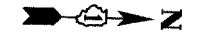
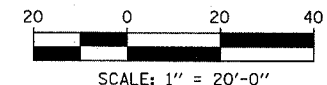


F.A.I. RTE.	SECTION	COUNTY	TOTAL SHEETS	SHEET NO.
94	•	COOK	860	72
STA. 2200+00.00 TO STA. 2362+00.00				
FED. ROAD DIST. NO. ILLINOIS		FED. AID PROJECT		
• (1516.1, 1717 & 1818) R-8		62694		



LOCATION MAP



MATCHLINE NB STA. 2334+50.00

MATCHLINE NB STA. 2338+50.00

LEGEND:

	PAVEMENT REMOVAL		COMB CONC CURB & GUTTER REMOVAL		SOIL BORING LOCATIONS
	PAVED SHOULDER REMOVAL		CHAIN LINK FENCE REMOVAL		LIGHT POLE FOUNDATION REMOVAL (SEE EXISTING ELECTRICAL PLANS)
	PAVEMENT/SHOULDER REMOVAL, SPECIAL		CONCRETE BARRIER/GUARDRAIL REMOVAL		
			TREE REMOVAL (UNITS) (NO UNIT SHOWN = <6)		

(+XX.XX) MAINLINE \mathbb{B} STATION/OFFSET
 (XX.XXRT)
 +XX.XX RAMP \mathbb{B} STATION/OFFSET
 XX.XXRT

NOTES:
 - ALL STATION/OFFSET/RADIUS CALLOUTS MEASURED TO EDGE OF PAVEMENT UNLESS OTHERWISE NOTED.
 - EXACT LOCATIONS OF EXISTING PIERS/ABUTMENTS TO BE FIELD VERIFIED

TYLIN INTERNATIONAL

REVISIONS	
NAME	DATE

ILLINOIS DEPARTMENT OF TRANSPORTATION
 F.A.I. 94 (DAN RYAN EXPRESSWAY)
PROPOSED PLAN
 NB 79th TO 76th STREET C-D RAMP
 NB I-94 STA. 2334+50.00 TO 2338+50.00
 SCALE: 1"=20'
 DATE: MARCH 18, 2005
 DRAWN BY: MPG
 CHECKED BY: JPM

03/25/2005 10:03:38 AM