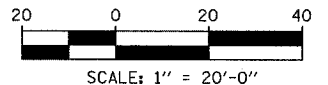
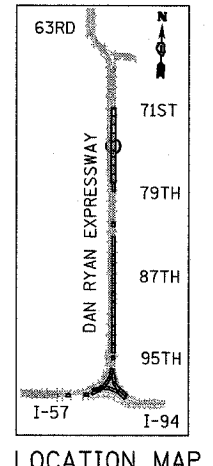
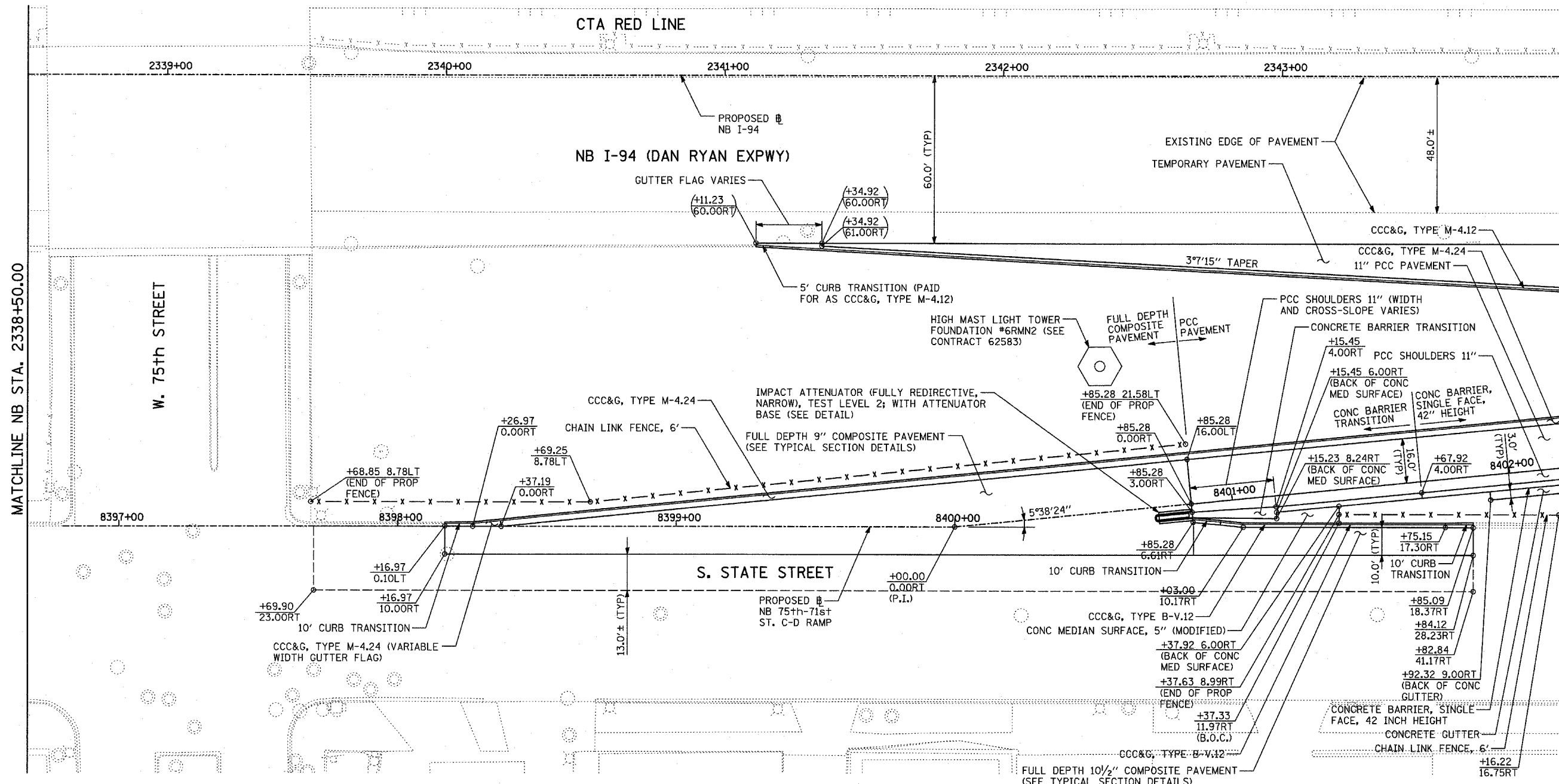


F.A.I. RTE.	SECTION	COUNTY	TOTAL SHEETS	SHEET NO.
94		COOK	860	74
STA. 2200+00.00 TO STA. 2362+00.00		FED. ROAD DIST. NO. ILLINOIS FED. AID PROJECT		
• (1516.1, 1717 & 1818) R-8				62694



- LEGEND:**
- PAVEMENT REMOVAL
  - PAVED SHOULDER REMOVAL
  - PAVEMENT/SHOULDER REMOVAL, SPECIAL
  - COMB CONC CURB & GUTTER REMOVAL
  - CHAIN LINK FENCE REMOVAL
  - CONCRETE BARRIER/GUARDRAIL REMOVAL
  - TREE REMOVAL (UNITS) (NO UNIT SHOWN = <6)
  - SOIL BORING LOCATIONS
  - LIGHT POLE FOUNDATION REMOVAL (SEE EXISTING ELECTRICAL PLANS)
  - MAINLINE @ STATION/OFFSET (+XX.XX / XX.XXRT)
  - RAMP @ STATION/OFFSET (+XX.XX / XX.XXRT)
- NOTES:**
- ALL STATION/OFFSET/RADIUS CALLOUTS MEASURED TO EDGE OF PAVEMENT UNLESS OTHERWISE NOTED.
  - EXACT LOCATIONS OF EXISTING PIERS/ABUTMENTS TO BE FIELD VERIFIED

REVISIONS	
NAME	DATE

ILLINOIS DEPARTMENT OF TRANSPORTATION  
 F.A.I. 94 (DAN RYAN EXPRESSWAY)  
**PROPOSED PLAN**  
 NB 75th TO 71st STREET C-D RAMP  
 NB I-94 STA. 2338+50.00 TO 2344+00.00  
 SCALE: 1"=20'  
 DATE: MARCH 18, 2005  
 DRAWN BY: MPG  
 CHECKED BY: JPM

TYLIN INTERNATIONAL