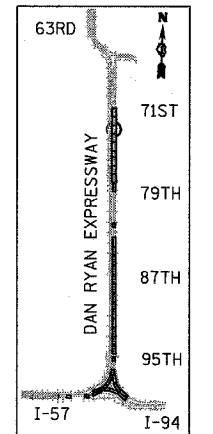
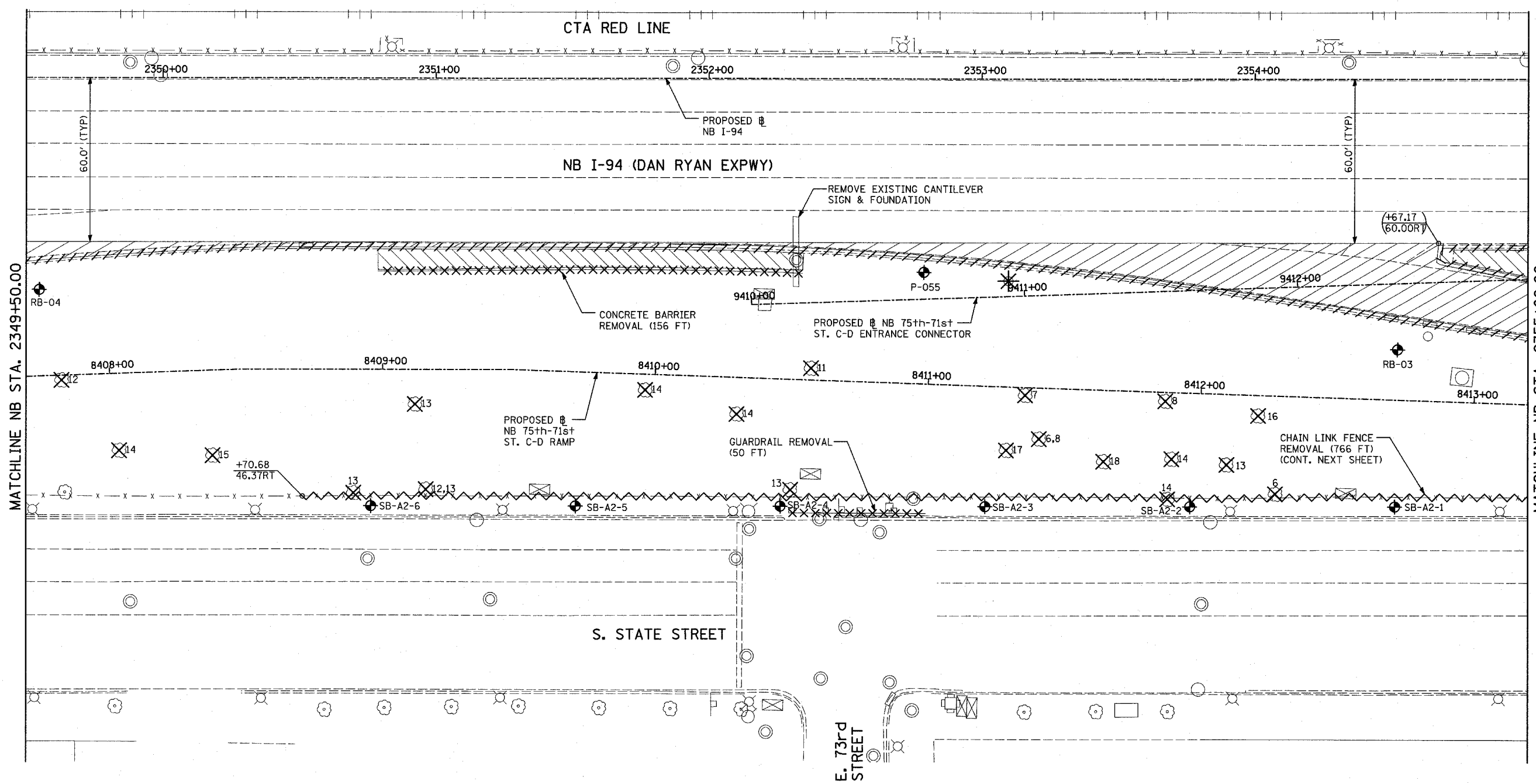
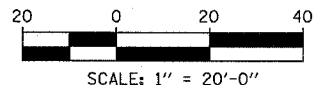


F.A.I. RTE.	SECTION	COUNTY	TOTAL SHEETS	SHEET NO.
94		COOK	860	77
STA. 2200+00.00		TO STA. 2362+00.00		
FED. ROAD DIST. NO.	ILLINOIS	FED. AID PROJECT		
• (1516.1, 1717 & 1818) R-8				62694



LOCATION MAP



**LEGEND:**

- PAVEMENT REMOVAL
- PAVED SHOULDER REMOVAL
- PAVEMENT/SHOULDER REMOVAL, SPECIAL
- COMB CONC CURB & GUTTER REMOVAL
- CHAIN LINK FENCE REMOVAL
- CONCRETE BARRIER/GUARDRAIL REMOVAL
- TREE REMOVAL (UNITS) (NO UNIT SHOWN = <6)
- SOIL BORING LOCATIONS
- LIGHT POLE FOUNDATION REMOVAL (SEE EXISTING ELECTRICAL PLANS)

- MAINLINE # STATION/OFFSET
- RAMP # STATION/OFFSET

**NOTES:**

- ALL STATION/OFFSET/RADIUS CALLOUTS MEASURED TO EDGE OF PAVEMENT UNLESS OTHERWISE NOTED.
- EXACT LOCATIONS OF EXISTING PIERS/ABUTMENTS TO BE FIELD VERIFIED

REVISIONS	
NAME	DATE

ILLINOIS DEPARTMENT OF TRANSPORTATION  
**F.A.I. 94 (DAN RYAN EXPRESSWAY)**  
**EXISTING PLAN**  
**NB 75th TO 71st STREET C-D RAMP**  
**NB I-94 STA. 2349+50.00 TO 2355+00.00**

SCALE: 1"=20'  
DATE: MARCH 18, 2005

DRAWN BY: MPG  
CHECKED BY: JPM

**TYLIN INTERNATIONAL**