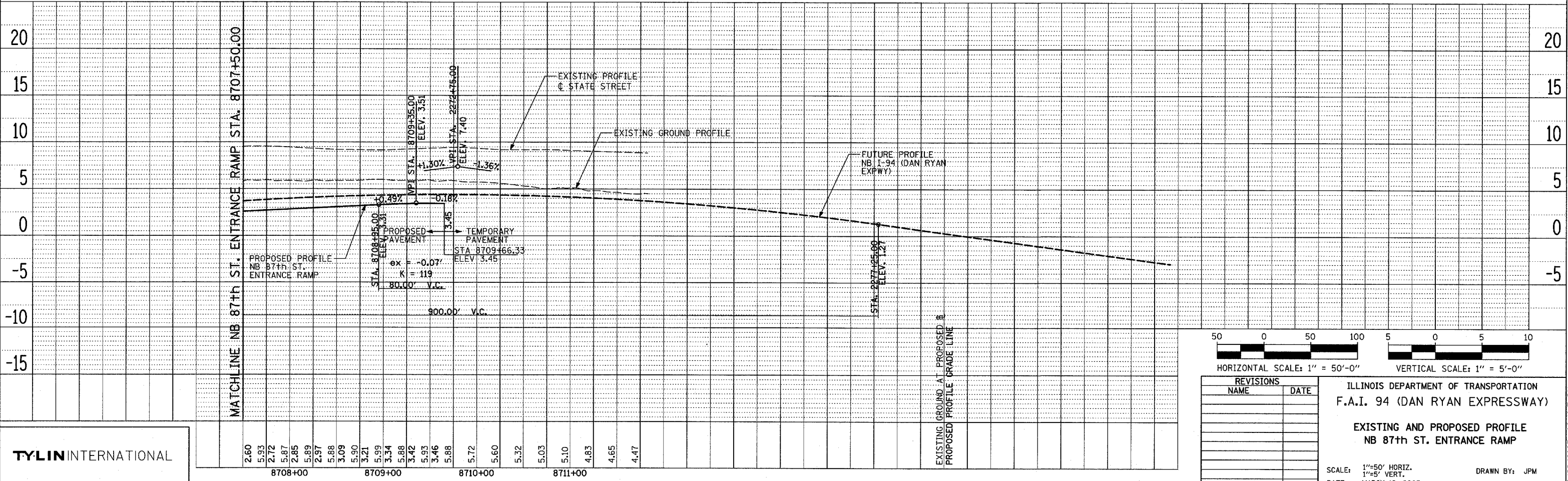
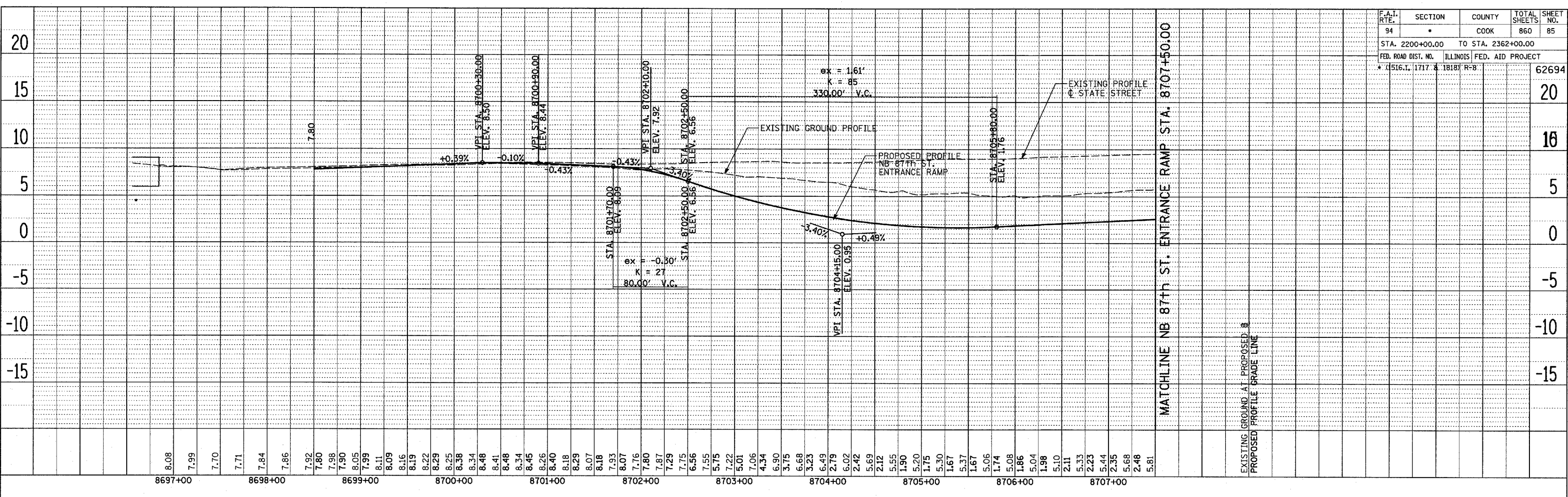
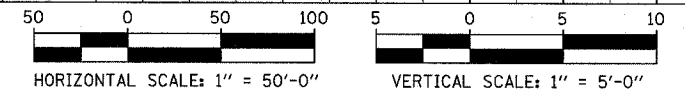


PLAN SURVEYED ALIGNED CHECKED BY: DATE: NOTE BOOK NO. OF WAY CHECKED CADD FILE NAME

PLAN SURVEYED ALIGNED CHECKED BY: DATE: NOTE BOOK NO. OF WAY CHECKED CADD FILE NAME



F.A.I. RTE. 94	SECTION *	COUNTY COOK	TOTAL SHEETS 860	SHEET NO. 85
STA. 2200+00.00		TO STA. 2362+00.00		
FED. ROAD DIST. NO. * (1516.L, 1717 & 1818) R-8		ILLINOIS FED. AID PROJECT		62694



REVISIONS	
NAME	DATE

ILLINOIS DEPARTMENT OF TRANSPORTATION  
 F.A.I. 94 (DAN RYAN EXPRESSWAY)  
 EXISTING AND PROPOSED PROFILE  
 NB 87th ST. ENTRANCE RAMP  
 SCALE: 1"=50' HORIZ.  
 1"=5' VERT.  
 DATE: MARCH 18, 2005  
 DRAWN BY: JPM  
 CHECKED BY: MFG

TYLIN INTERNATIONAL

03/28/2005 02:40:17 PM