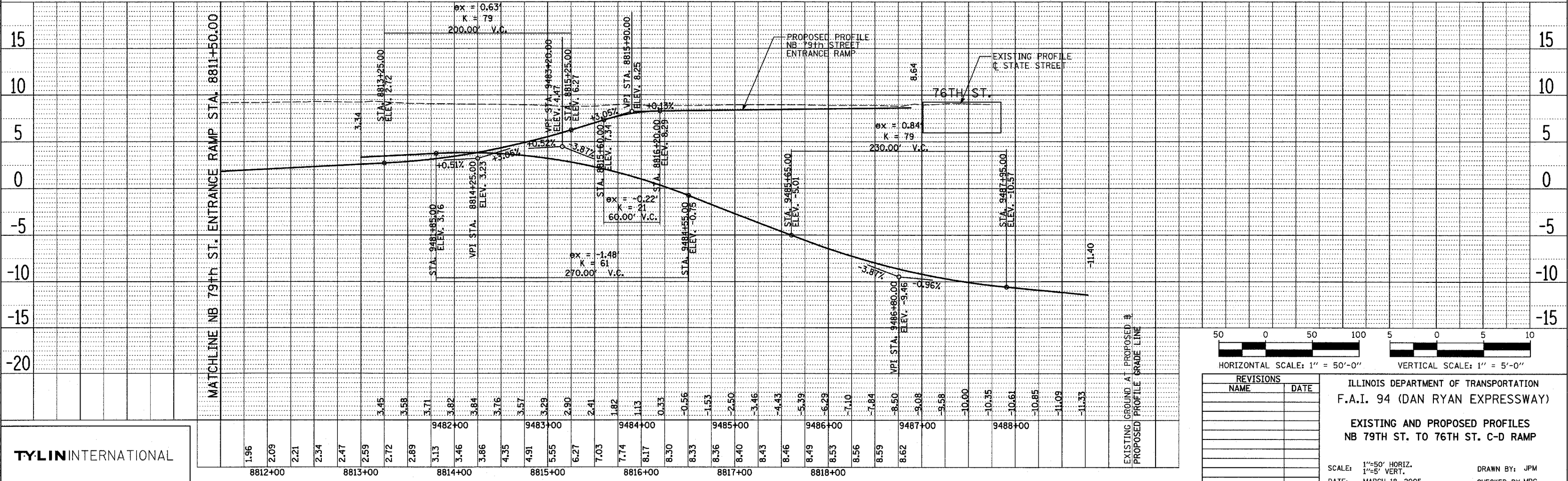
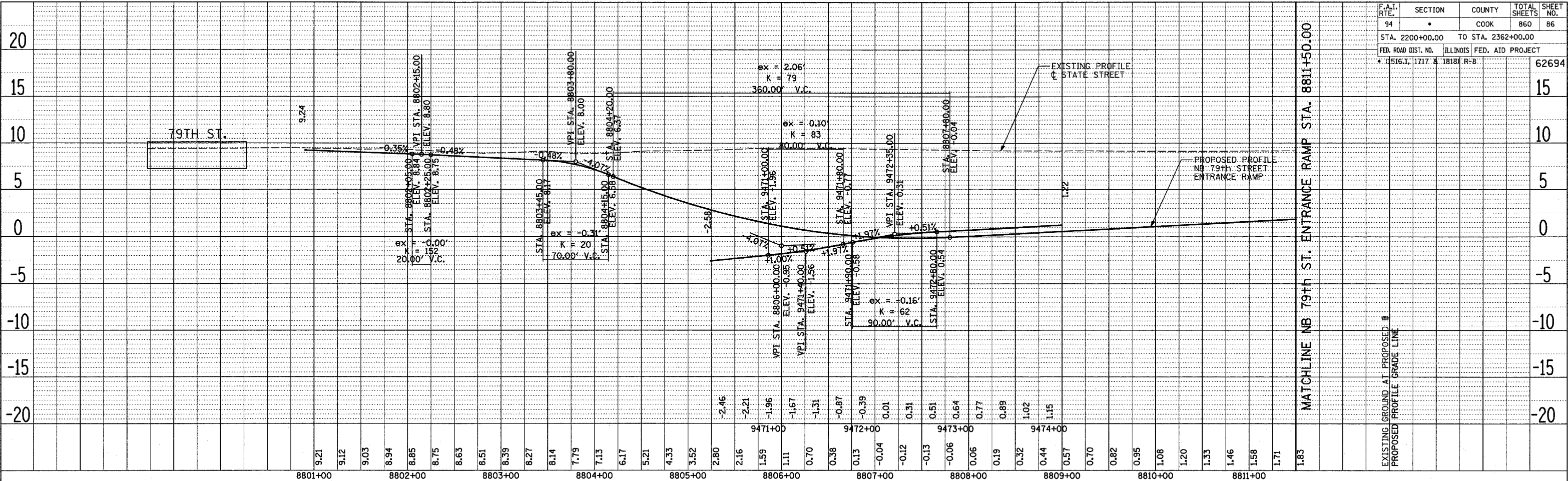
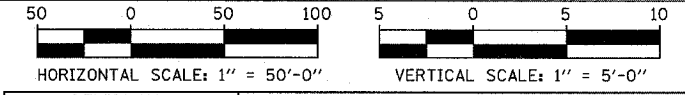


PLAN SURVEYED BY DATE  
 ALIGNED BY DATE  
 AUTOMATIC CHECKED BY DATE  
 NOTE BOOK NO. OF WAY CHECKED BY DATE  
 CAD FILE NAME

PLAN SURVEYED BY DATE  
 ALIGNED BY DATE  
 AUTOMATIC CHECKED BY DATE  
 NOTE BOOK NO. OF WAY CHECKED BY DATE  
 CAD FILE NAME



F.A.I. RTE.	SECTION	COUNTY	TOTAL SHEETS	SHEET NO.
94	*	COOK	860	86
STA. 2200+00.00		TO STA. 2362+00.00		
FED. ROAD DIST. NO.		ILLINOIS FED. AID PROJECT		
* 0516.I, 1717 & 1818/R-8				62694



REVISIONS	
NAME	DATE

ILLINOIS DEPARTMENT OF TRANSPORTATION  
 F.A.I. 94 (DAN RYAN EXPRESSWAY)  
 EXISTING AND PROPOSED PROFILES  
 NB 79TH ST. TO 76TH ST. C-D RAMP  
 SCALE: 1"=50' HORIZ.  
 1"=5' VERT.  
 DATE: MARCH 18, 2005  
 DRAWN BY: JPM  
 CHECKED BY: MPG

TYLIN INTERNATIONAL

03/28/2005 02:40:59 PM