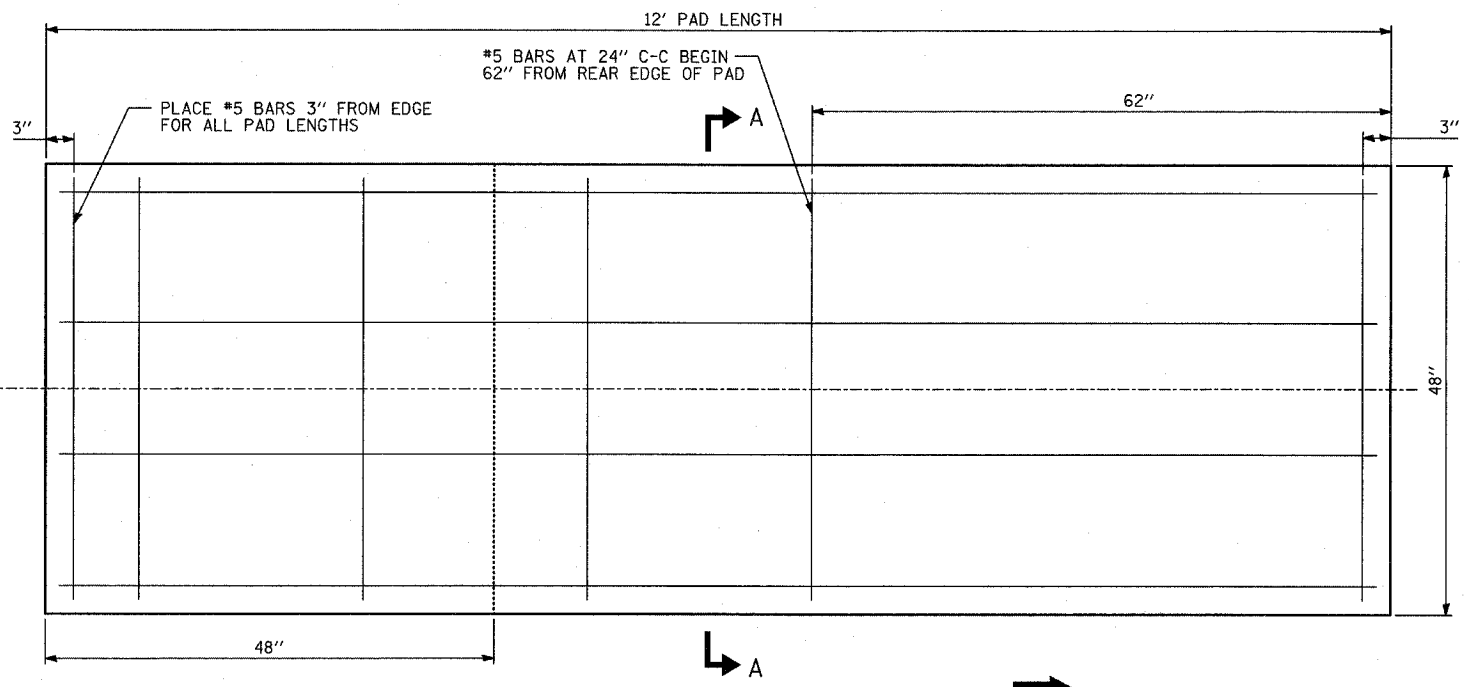
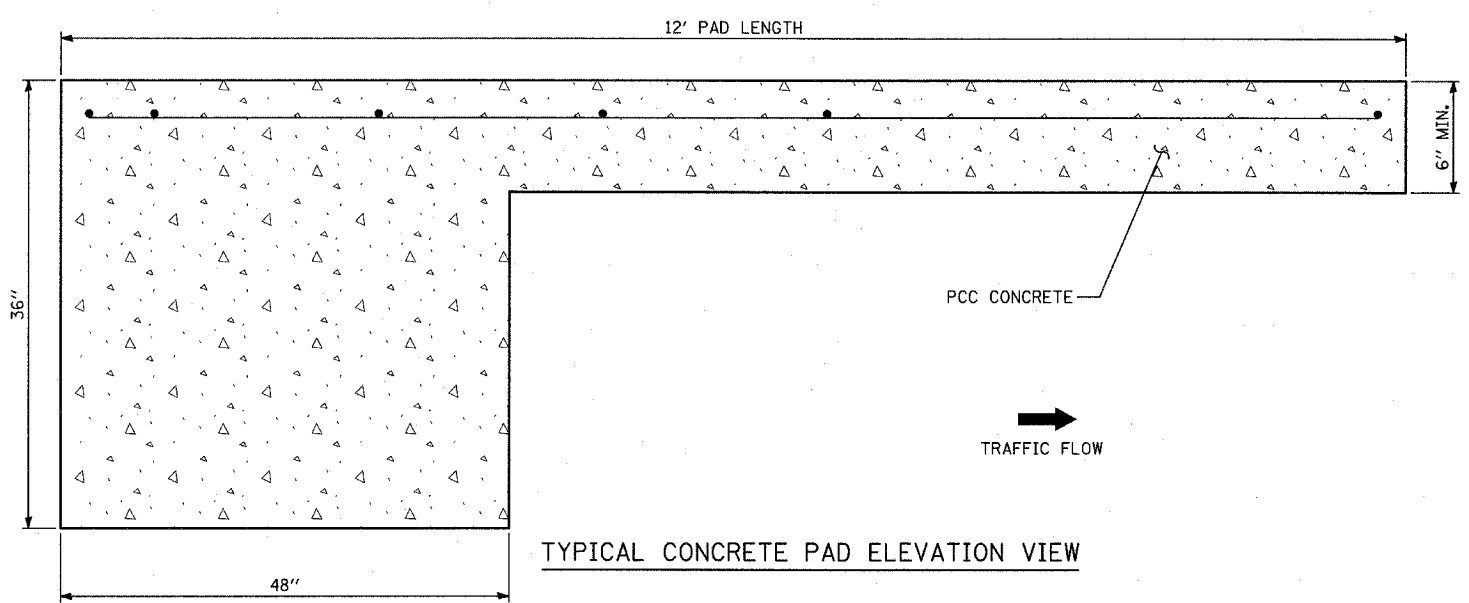


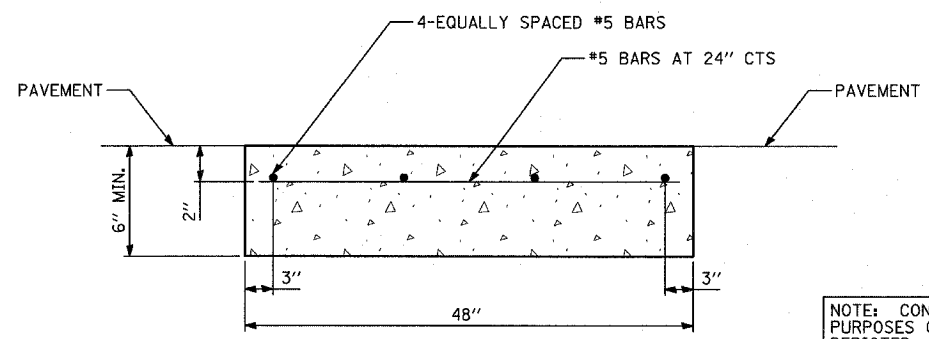
F.A.I. RTE.	SECTION	COUNTY	TOTAL SHEETS	SHEET NO.
94		COOK	860	89
STA. 2200+00.00 TO STA. 2362+00.00				
FED. ROAD DIST. NO.		ILLINOIS	FED. AID PROJECT	
		• (1516.1, 1717 & 1818) R-8		62694



TYPICAL CONCRETE PAD PLAN VIEW



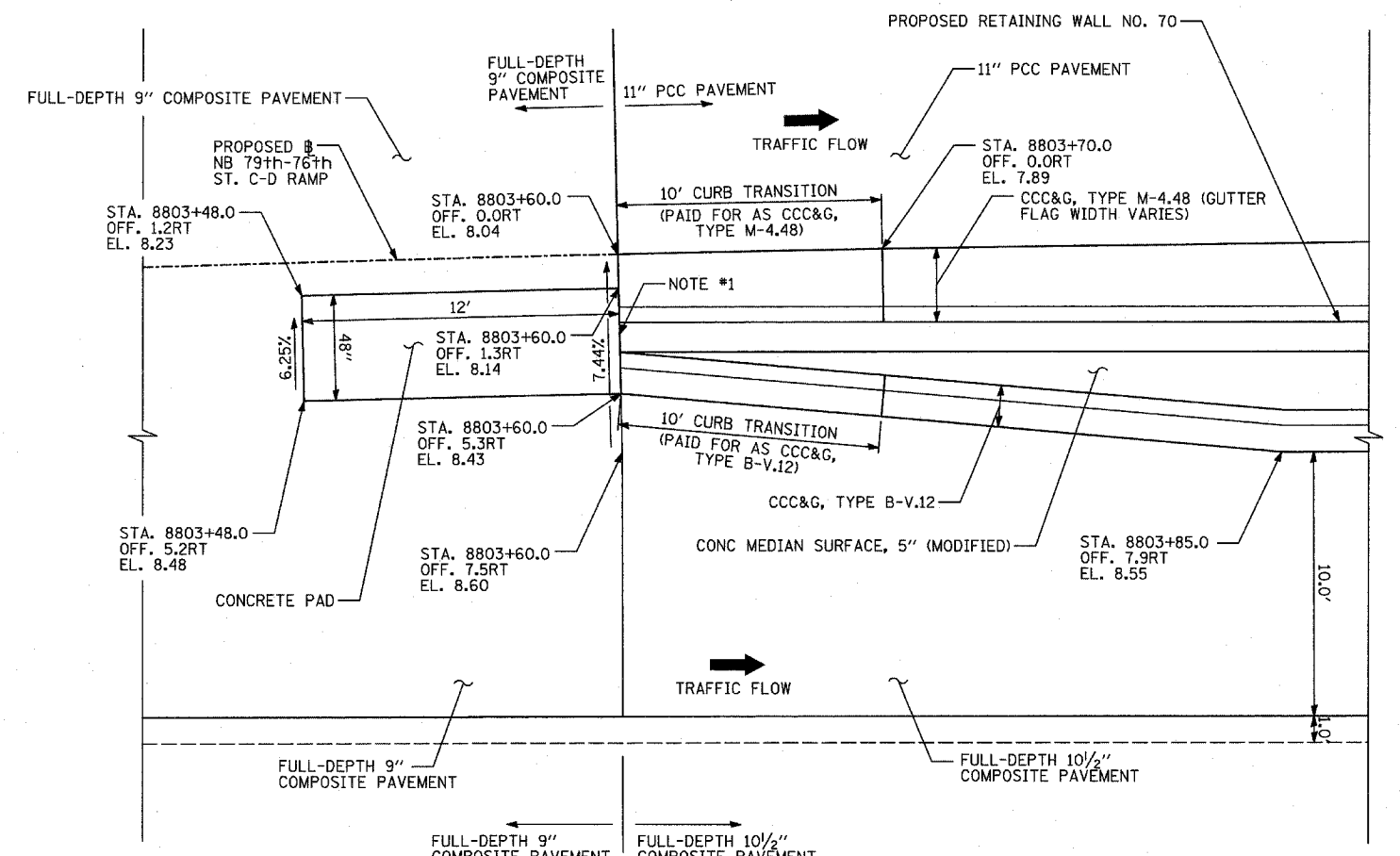
TYPICAL CONCRETE PAD ELEVATION VIEW



SECTION A-A

NOTE: CONCRETE PAD DRAWING INCLUDED FOR INFORMATIONAL PURPOSES ONLY. THE PAD FOR A 3 BAY GUARDRAIL SYSTEM IS DEPICTED. EXACT DIMENSIONS MUST COMPLY WITH THE MANUFACTURER'S REQUIREMENTS FOR SPECIFIED PAY ITEM: IMPACT ATTENUATOR (FULLY REDIRECTIVE, NARROW) TEST LEVEL 2

TYLIN INTERNATIONAL



CONCRETE PAD NB I-94 @ 79th-76th C-D ENTRANCE RAMP GORE: PLAN VIEW

ADDITIONAL PADS FOR THIS TYPE ATTENUATOR DETAILED ON FOLLOWING SHEETS.

NOTE #1: PREFORMED JOINT FILLER, 3/4" (INCLUDED IN COST OF IMPACT ATTENUATOR)

REVISIONS	
NAME	DATE

ILLINOIS DEPARTMENT OF TRANSPORTATION  
 F.A.I. 94 (DAN RYAN EXPRESSWAY)  
 DETAIL OF CONCRETE PAD FOR IMPACT ATTENUATOR (FULLY REDIRECTIVE, NARROW) TEST LEVEL 2 AT 79TH TO 76TH STREET C-D ENTRANCE RAMP  
 SCALE: 1"=5'  
 DATE: MARCH 18, 2005  
 DRAWN BY: MPG  
 CHECKED BY: TGB

03/25/2005 10:42 AM