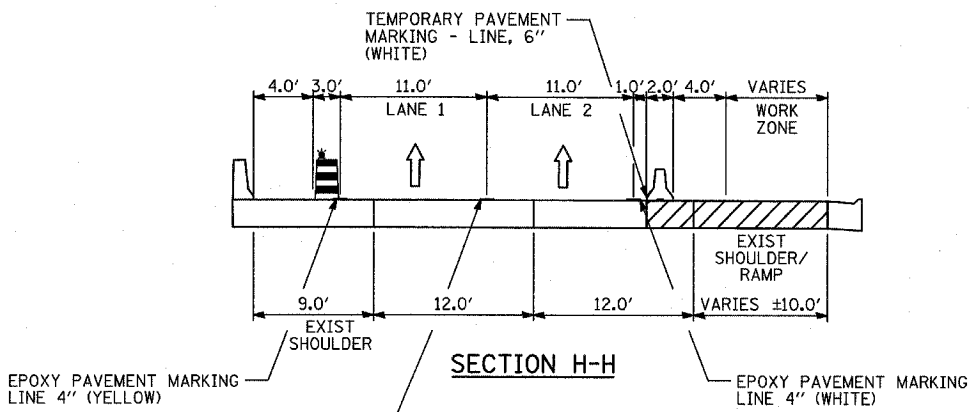
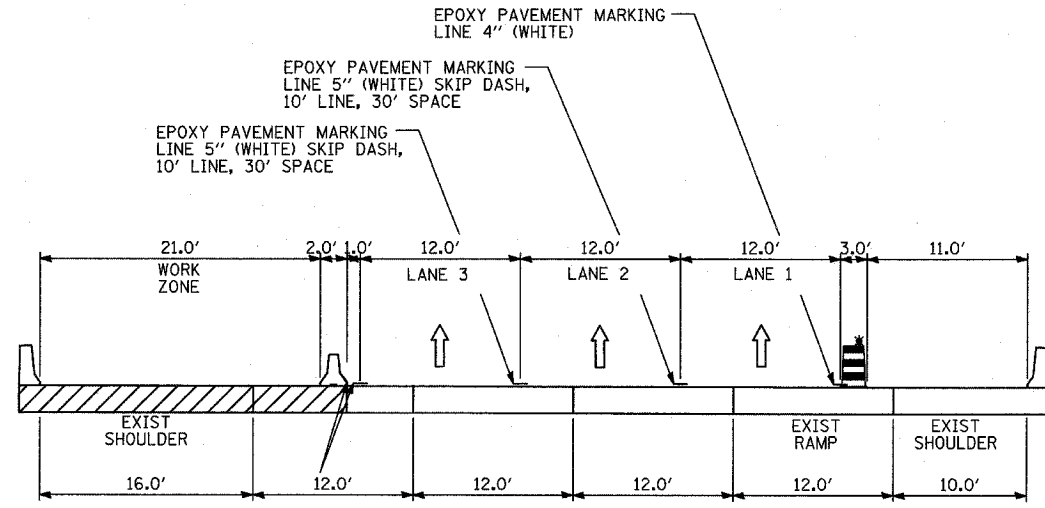


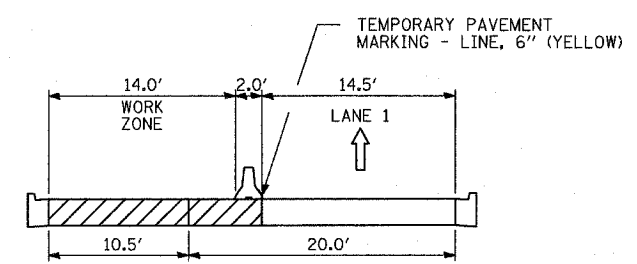
SECTION E-E



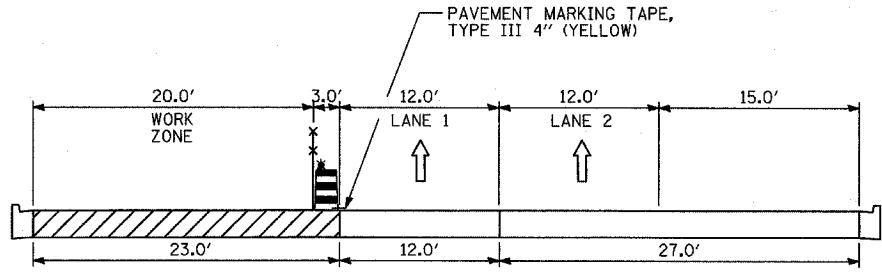
SECTION H-H



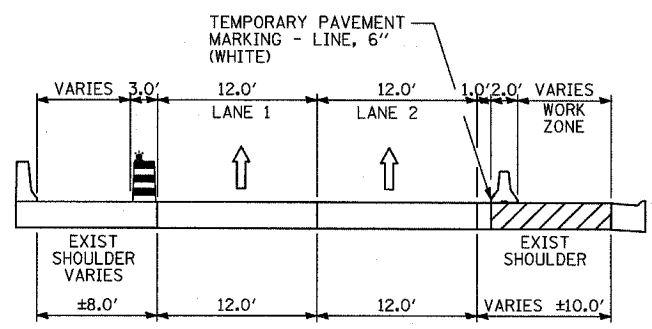
SECTION L-L



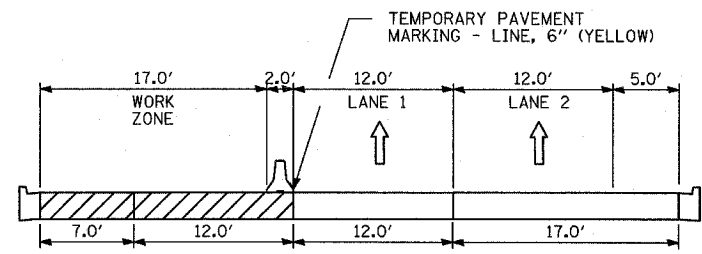
SECTION F-F



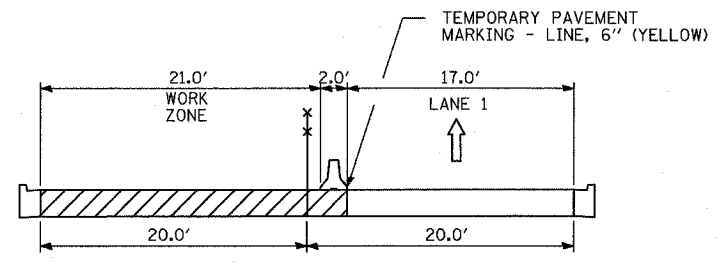
SECTION I-I



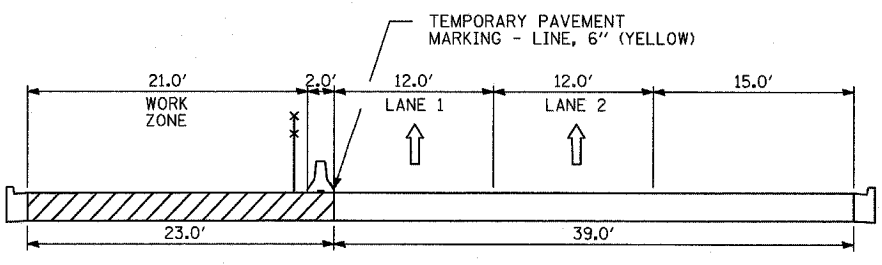
SECTION M-M



SECTION J-J



SECTION G-G



SECTION K-K

- LEGEND:**
- TEMPORARY CONCRETE BARRIER (WITH REFLECTORS ON TOP AND SIDE FACING TRAFFIC)
 - TRAFFIC MOVEMENT
 - DRUM WITH MONO-DIRECTIONAL STEADY BURNING LIGHT
 - SINGLE-FACE CONCRETE BARRIER, 32"
 - TEMPORARY CHAIN LINK FENCE (PORTABLE)
 - WORK ZONE
- REFER TO MOT PLAN SHEETS FOR LOCATIONS OF TYPICAL SECTIONS

REVISIONS	
NAME	DATE

ILLINOIS DEPARTMENT OF TRANSPORTATION
 F.A.I. 94 (DAN RYAN EXPRESSWAY)
 GENERAL NOTES
 CONSTRUCTION STAGING NOTES
 MAINTENANCE OF TRAFFIC DETAILS
 (2 OF 3)

SCALE: NO SCALE
 DATE: MARCH 18, 2005
 DRAWN BY: RTM
 CHECKED BY: JPA

P:\0231\3\road\civ\mishra\02310231.dwg 03/25/2005 11:35:01 AM