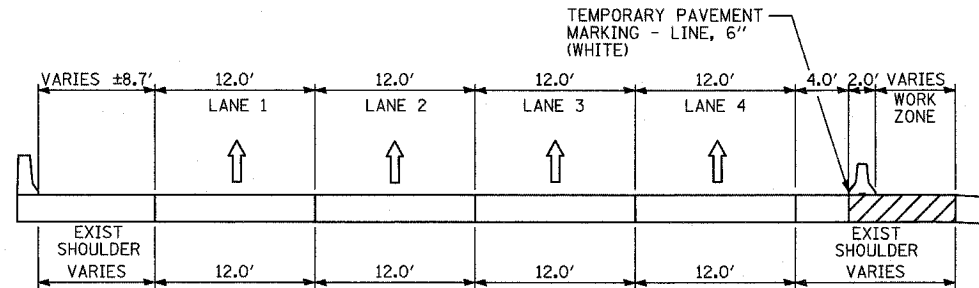
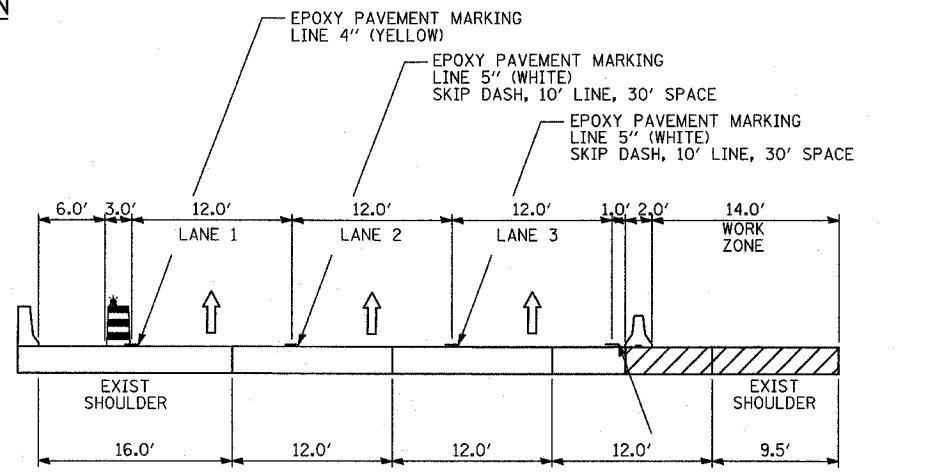


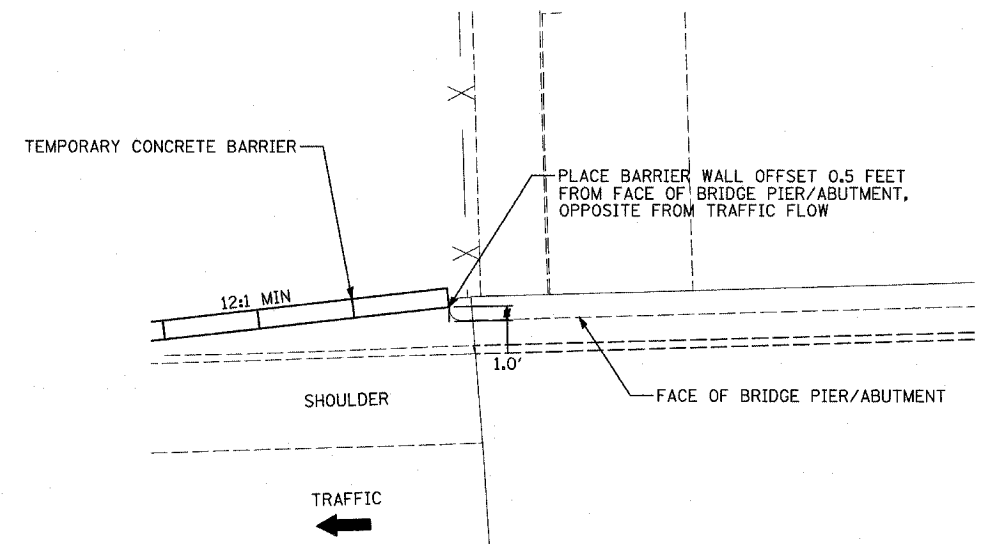
SECTION N-N



SECTION 0-0

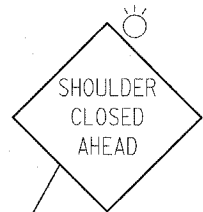
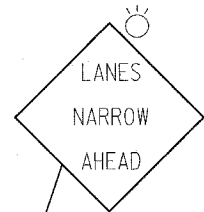
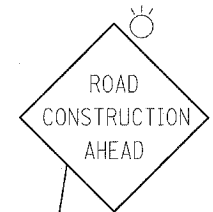


SECTION P-P

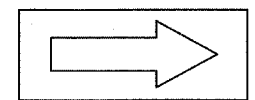


TEMPORARY CONCRETE BARRIER BEHIND ABUTMENT

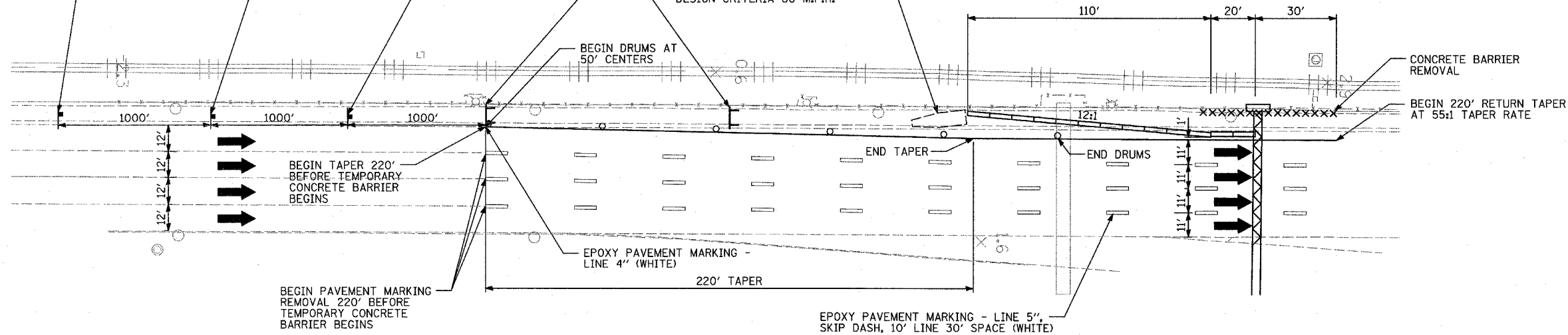
W20-1(O)-48



W1-6R(O)-6030



IMPACT ATTENUATOR, TEMPORARY (NON-REDIRECTIVE), TEST LEVEL 3, DESIGN CRITERIA 60 M.P.H.



LEGEND:

- TEMPORARY CONCRETE BARRIER (WITH REFLECTORS ON TOP AND SIDE FACING TRAFFIC)
- TRAFFIC MOVEMENT
- DRUM WITH MONO-DIRECTIONAL STEADY BURNING LIGHT
- SINGLE-FACE CONCRETE BARRIER, 32"
- TEMPORARY CHAIN LINK FENCE (PORTABLE)
- WORK ZONE

REFER TO MOT PLAN SHEETS FOR LOCATIONS OF TYPICAL SECTIONS

TYPICAL MAINTENANCE OF TRAFFIC FOR OVERHEAD SIGN TRUSS FOUNDATION IN MEDIAN

QUANTITIES FOR EACH SIGN TRUSS LOCATION HAVE BEEN ADDED INTO THE FINAL SUMMARY OF QUANTITIES BASED ON THIS DETAIL

REVISIONS	
NAME	DATE

ILLINOIS DEPARTMENT OF TRANSPORTATION
 F.A.I. 94 (DAN RYAN EXPRESSWAY)
 GENERAL NOTES
 CONSTRUCTION STAGING NOTES
 MAINTENANCE OF TRAFFIC DETAILS
 (3 OF 3)

SCALE: NO SCALE DRAWN BY: RTM
 DATE: MARCH 18, 2005 CHECKED BY: JPA