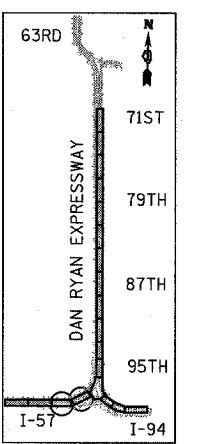
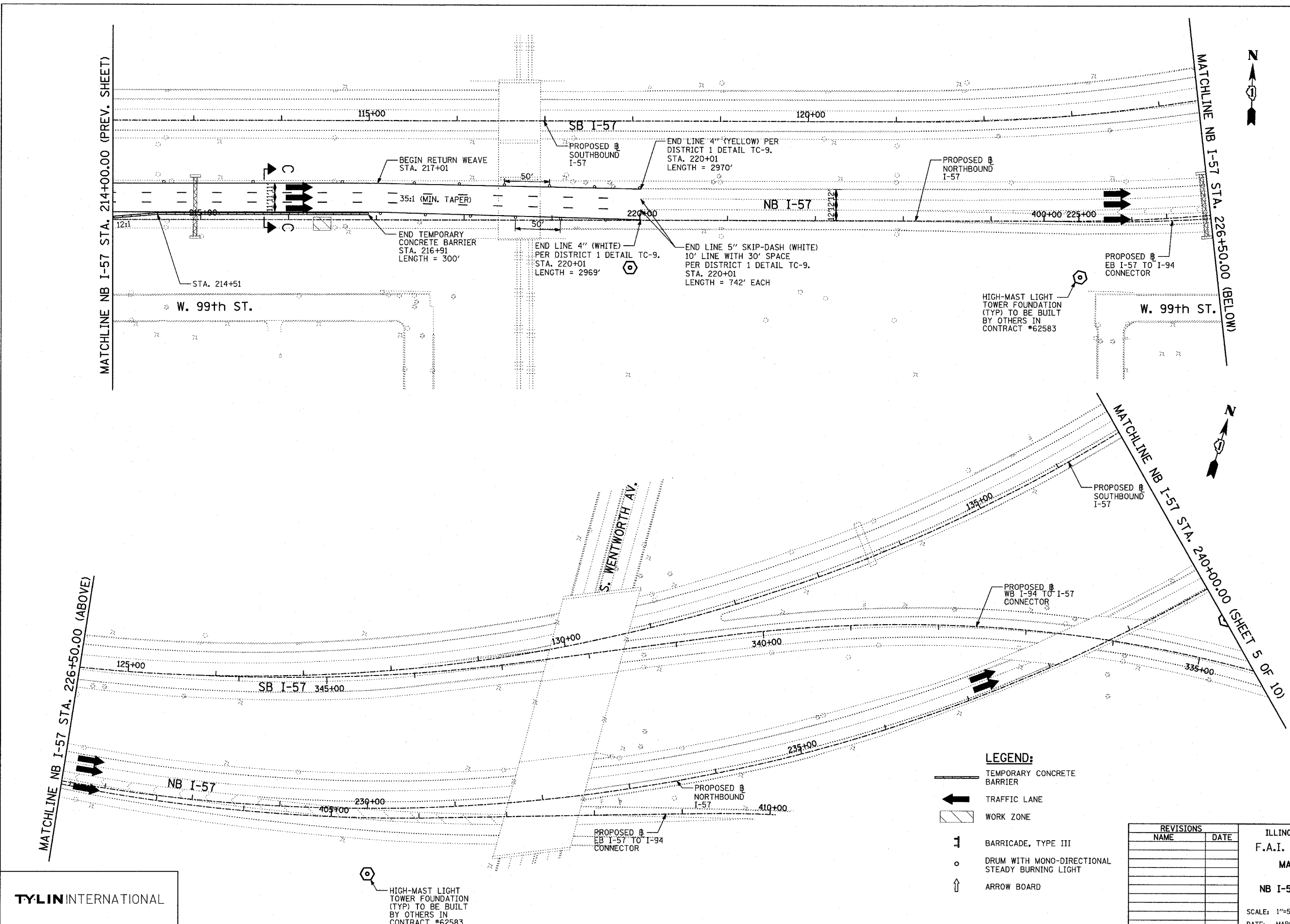
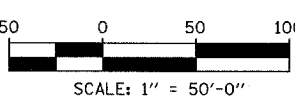


| | | | | |
|------------------------------------|----------|------------------|--------------|-----------|
| F.A.I. RTE. | SECTION | COUNTY | TOTAL SHEETS | SHEET NO. |
| 94 | | COOK | 860 | 128 |
| STA. 2200+00.00 TO STA. 2362+00.00 | | | | |
| FED. ROAD DIST. NO. | ILLINOIS | FED. AID PROJECT | | |
| * (1516.1, 1717 & 1818) R-8 | | 62694 | | |



LOCATION MAP



LEGEND:

- TEMPORARY CONCRETE BARRIER
- TRAFFIC LANE
- WORK ZONE
- BARRICADE, TYPE III
- DRUM WITH MONO-DIRECTIONAL STEADY BURNING LIGHT
- ARROW BOARD

| REVISIONS | |
|-----------|------|
| NAME | DATE |
| | |
| | |
| | |
| | |
| | |
| | |

ILLINOIS DEPARTMENT OF TRANSPORTATION
 F.A.I. 94 (DAN RYAN EXPRESSWAY)
 MAINTENANCE OF TRAFFIC PLAN
 STAGE 1 - NB I-94
 NB I-57 STA. 214+00.00 TO 240+00.00
 SHEET 2 OF 11
 SCALE: 1"=50'-0" DRAWN BY: RTM
 DATE: MARCH 18, 2005 CHECKED BY: JPA

TYLIN INTERNATIONAL

03/25/2005 11:37:07 AM