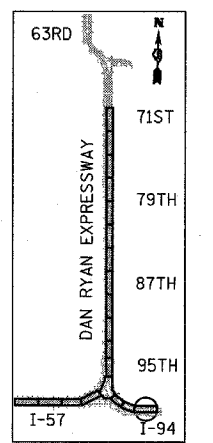
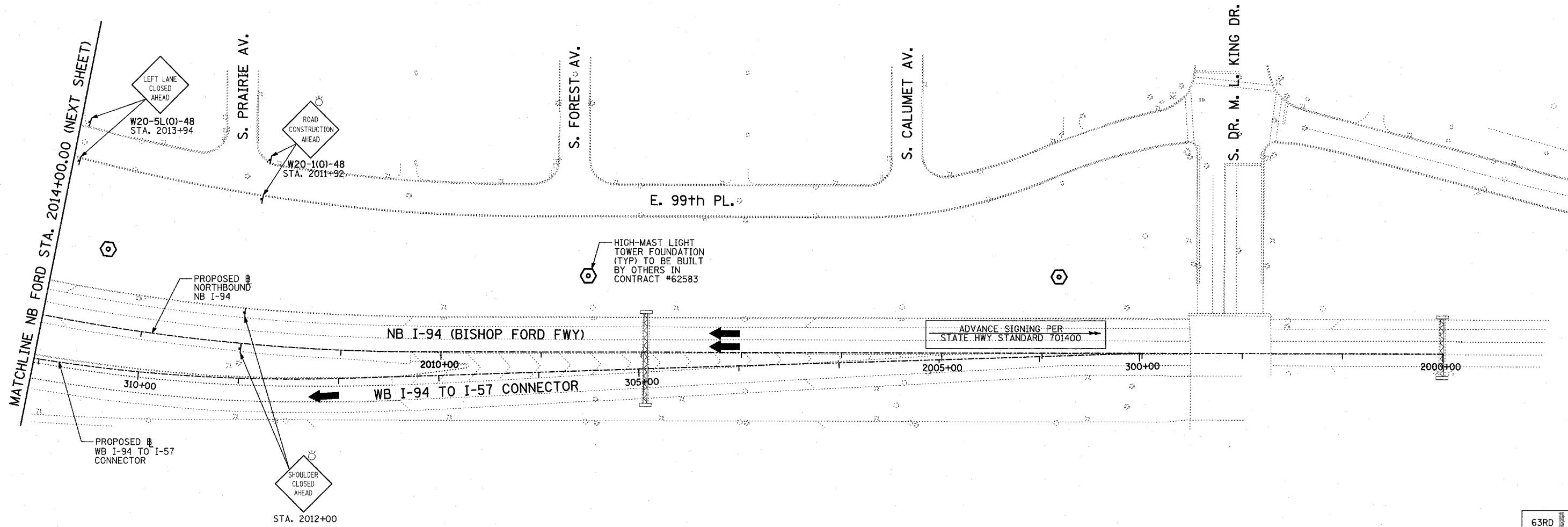
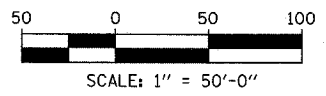


F.A.I. RTE.	SECTION	COUNTY	TOTAL SHEETS	SHEET NO.
94	*	COOK	860	129
STA. 2200+00.00		TO STA. 2362+00.00		
FED. ROAD DIST. NO.		ILLINOIS	FED. AID PROJECT	
* (1516.1, 1717 & 1818) R-8		62694		



LOCATION MAP



- LEGEND:**
- TEMPORARY CONCRETE BARRIER
 - TRAFFIC LANE
 - WORK ZONE
 - BARRICADE, TYPE III
 - DRUM WITH MONO-DIRECTIONAL STEADY BURNING LIGHT
 - ARROW BOARD

REVISIONS	
NAME	DATE

ILLINOIS DEPARTMENT OF TRANSPORTATION
 F.A.I. 94 (DAN RYAN EXPRESSWAY)
 MAINTENANCE OF TRAFFIC PLAN
 STAGE 1 - NB I-94
 NB FORD STA. 2000+00.00 TO 2014+00.00
 SHEET 3 OF 11

SCALE: 1"=50'-0"
 DATE: MARCH 18, 2005
 DRAWN BY: RTM
 CHECKED BY: JPA

TYLIN INTERNATIONAL

03/25/2005 11:37:50 AM