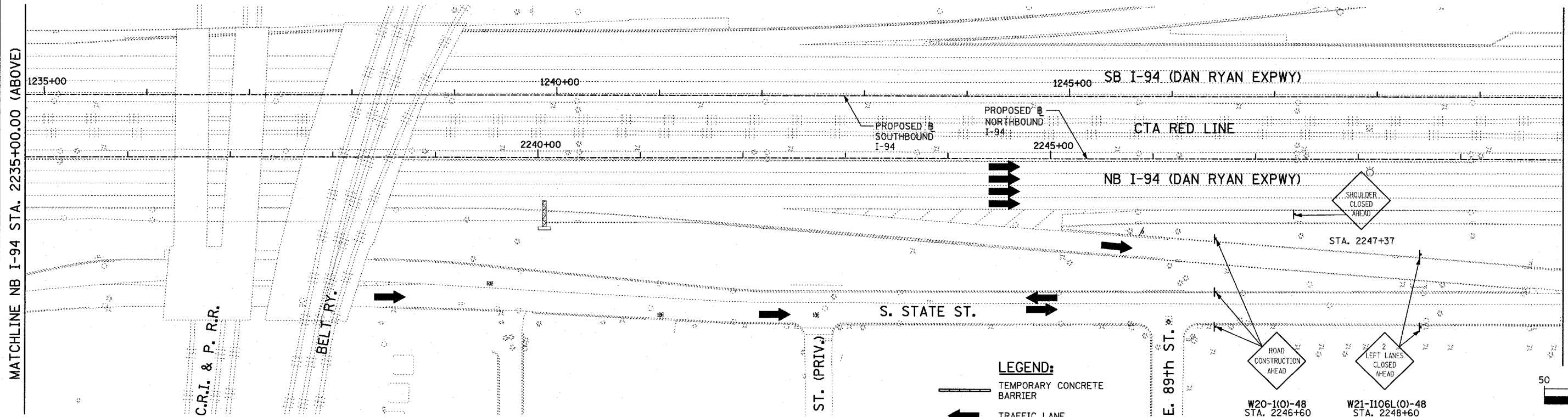
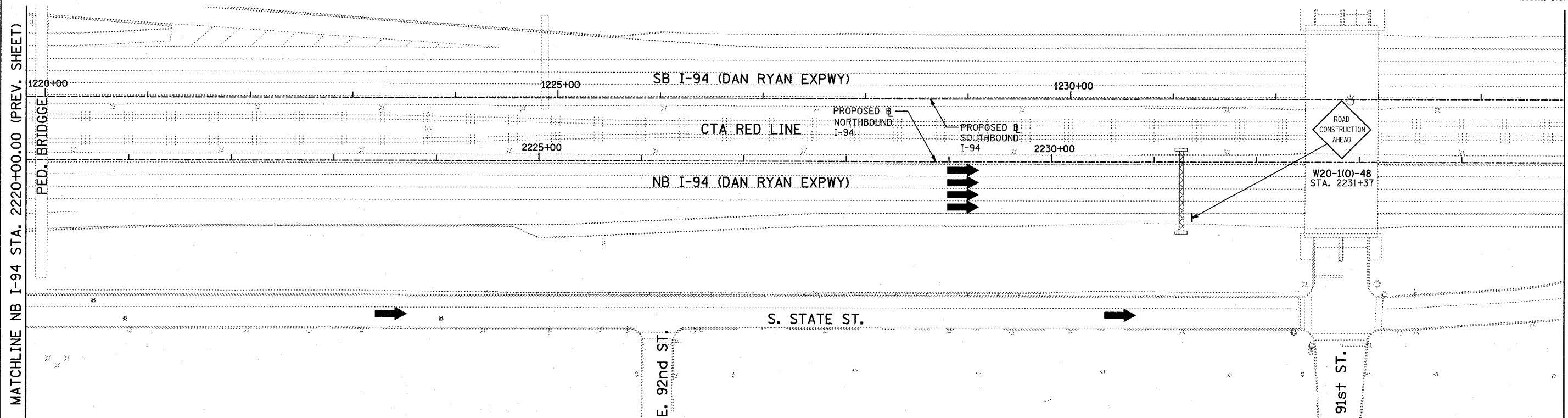


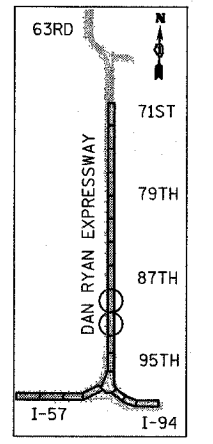
F.A.I. RTE.	SECTION	COUNTY	TOTAL SHEETS	SHEET NO.
94		COOK	860	133
STA. 2200+00.00 TO STA. 2362+00.00				
FED. ROAD DIST. NO.		ILLINOIS	FED. AID PROJECT	
		1516.1, 1717 & 1818		R-8
				62694



- LEGEND:**
- TEMPORARY CONCRETE BARRIER
 - TRAFFIC LANE
 - WORK ZONE
 - BARRICADE, TYPE III
 - DRUM WITH MONO-DIRECTIONAL STEADY BURNING LIGHT
 - ARROW BOARD

REVISIONS	
NAME	DATE

ILLINOIS DEPARTMENT OF TRANSPORTATION
 F.A.I. 94 (DAN RYAN EXPRESSWAY)
 MAINTENANCE OF TRAFFIC PLAN
 STAGE 1 - NB I-94
 NB I-94 STA. 2220+00.00 TO 2250+00.00
 SHEET 7 OF 11
 SCALE: 1"=50'-0"
 DATE: MARCH 18, 2005
 DRAWN BY: RTM
 CHECKED BY: JPA



TYLIN INTERNATIONAL

MATCHLINE NB I-94 STA. 2220+00.00 (PREV. SHEET)

MATCHLINE NB I-94 STA. 2235+00.00 (BELOW)

MATCHLINE NB I-94 STA. 2235+00.00 (ABOVE)

MATCHLINE NB I-94 STA. 2250+00.00 (NEXT SHEET)

P:\0237_3\road\cvt\cmit\10150430.dgn 03/25/2005 11:41:05 AM