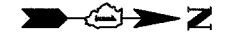


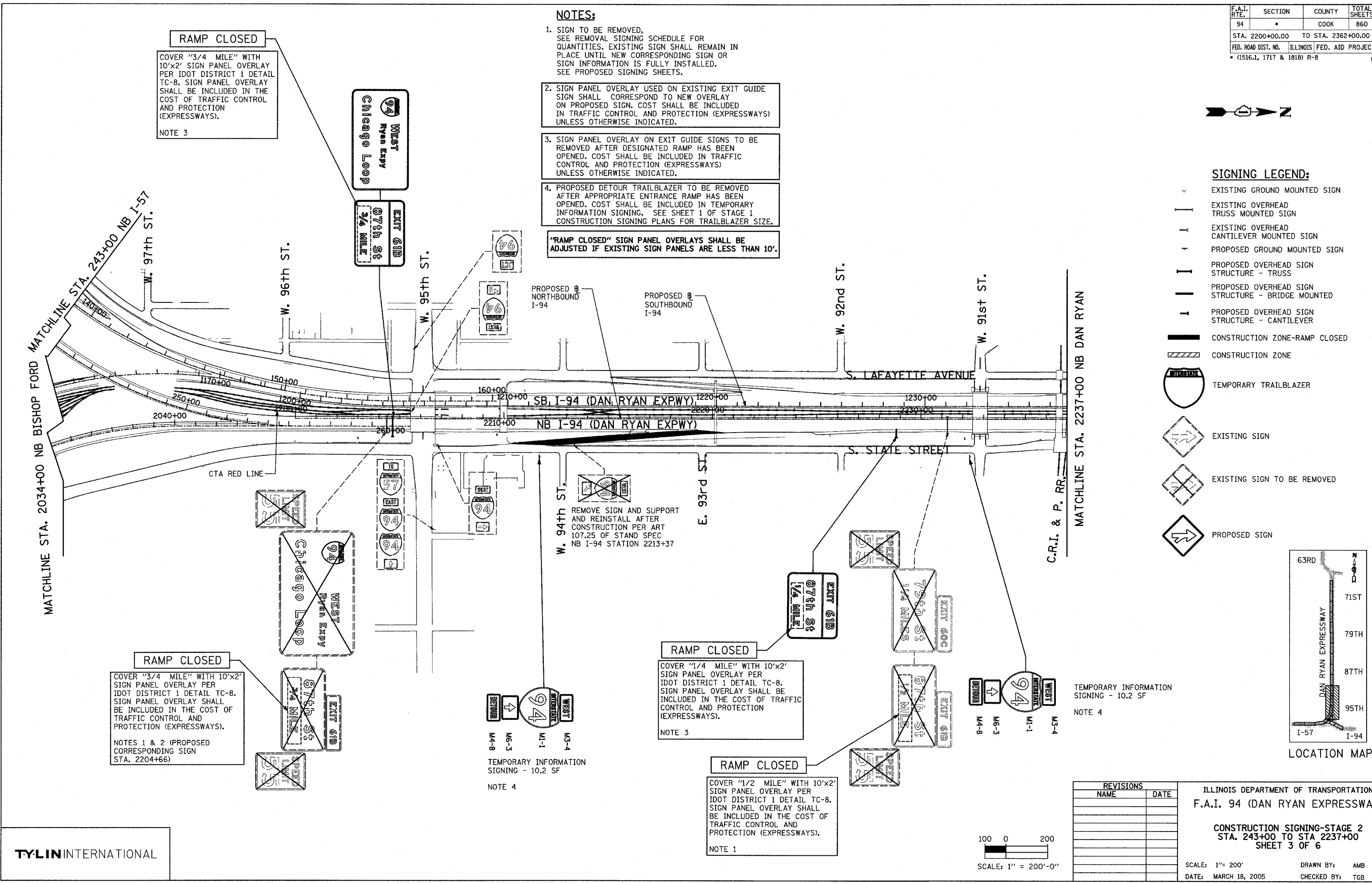
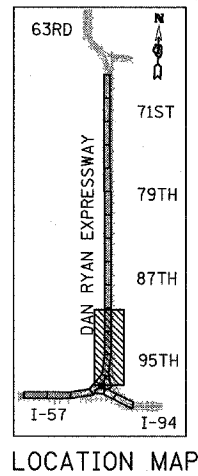
NOTES:

- SIGN TO BE REMOVED, SEE REMOVAL SIGNING SCHEDULE FOR QUANTITIES. EXISTING SIGN SHALL REMAIN IN PLACE UNTIL NEW CORRESPONDING SIGN OR SIGN INFORMATION IS FULLY INSTALLED. SEE PROPOSED SIGNING SHEETS.
 - SIGN PANEL OVERLAY USED ON EXISTING EXIT GUIDE SIGN SHALL CORRESPOND TO NEW OVERLAY ON PROPOSED SIGN. COST SHALL BE INCLUDED IN TRAFFIC CONTROL AND PROTECTION (EXPRESSWAYS) UNLESS OTHERWISE INDICATED.
 - SIGN PANEL OVERLAY ON EXIT GUIDE SIGNS TO BE REMOVED AFTER DESIGNATED RAMP HAS BEEN OPENED. COST SHALL BE INCLUDED IN TRAFFIC CONTROL AND PROTECTION (EXPRESSWAYS) UNLESS OTHERWISE INDICATED.
 - PROPOSED DETOUR TRAILBLAZER TO BE REMOVED AFTER APPROPRIATE ENTRANCE RAMP HAS BEEN OPENED. COST SHALL BE INCLUDED IN TEMPORARY INFORMATION SIGNING. SEE SHEET 1 OF STAGE 1 CONSTRUCTION SIGNING PLANS FOR TRAILBLAZER SIZE.
- "RAMP CLOSED" SIGN PANEL OVERLAYS SHALL BE ADJUSTED IF EXISTING SIGN PANELS ARE LESS THAN 10'.



SIGNING LEGEND:

- EXISTING GROUND MOUNTED SIGN
- EXISTING OVERHEAD TRUSS MOUNTED SIGN
- EXISTING OVERHEAD CANTILEVER MOUNTED SIGN
- PROPOSED GROUND MOUNTED SIGN
- PROPOSED OVERHEAD SIGN STRUCTURE - TRUSS
- PROPOSED OVERHEAD SIGN STRUCTURE - BRIDGE MOUNTED
- PROPOSED OVERHEAD SIGN STRUCTURE - CANTILEVER
- CONSTRUCTION ZONE-RAMP CLOSED
- CONSTRUCTION ZONE
- TEMPORARY TRAILBLAZER
- EXISTING SIGN
- EXISTING SIGN TO BE REMOVED
- PROPOSED SIGN



RAMP CLOSED
COVER "3/4 MILE" WITH 10'x2' SIGN PANEL OVERLAY PER IDOT DISTRICT 1 DETAIL TC-8. SIGN PANEL OVERLAY SHALL BE INCLUDED IN THE COST OF TRAFFIC CONTROL AND PROTECTION (EXPRESSWAYS).
NOTE 3

RAMP CLOSED
COVER "3/4 MILE" WITH 10'x2' SIGN PANEL OVERLAY PER IDOT DISTRICT 1 DETAIL TC-8. SIGN PANEL OVERLAY SHALL BE INCLUDED IN THE COST OF TRAFFIC CONTROL AND PROTECTION (EXPRESSWAYS).
NOTES 1 & 2 (PROPOSED CORRESPONDING SIGN STA. 2204+66)

RAMP CLOSED
COVER "1/4 MILE" WITH 10'x2' SIGN PANEL OVERLAY PER IDOT DISTRICT 1 DETAIL TC-8. SIGN PANEL OVERLAY SHALL BE INCLUDED IN THE COST OF TRAFFIC CONTROL AND PROTECTION (EXPRESSWAYS).
NOTE 3

RAMP CLOSED
COVER "1/2 MILE" WITH 10'x2' SIGN PANEL OVERLAY PER IDOT DISTRICT 1 DETAIL TC-8. SIGN PANEL OVERLAY SHALL BE INCLUDED IN THE COST OF TRAFFIC CONTROL AND PROTECTION (EXPRESSWAYS).
NOTE 1

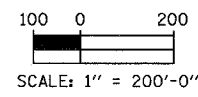
REMOVE SIGN AND SUPPORT AND REINSTALL AFTER CONSTRUCTION PER ART 107.25 OF STAND SPEC NB I-94 STATION 2213+37

TEMPORARY INFORMATION SIGNING - 10.2 SF
NOTE 4

TEMPORARY INFORMATION SIGNING - 10.2 SF
NOTE 4

REVISIONS	
NAME	DATE

ILLINOIS DEPARTMENT OF TRANSPORTATION
F.A.I. 94 (DAN RYAN EXPRESSWAY)
CONSTRUCTION SIGNING-STAGE 2
STA. 243+00 TO STA 2237+00
SHEET 3 OF 6
SCALE: 1" = 200'
DATE: MARCH 18, 2005
DRAWN BY: AMB
CHECKED BY: TGB



P:\0221\3\road\alt\asb\1\asb103\cad.dgn 3/25/2005 4:50:05 PM