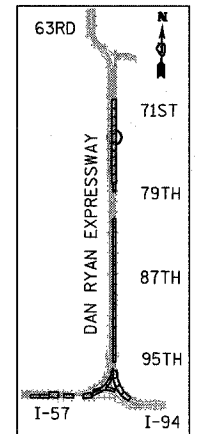
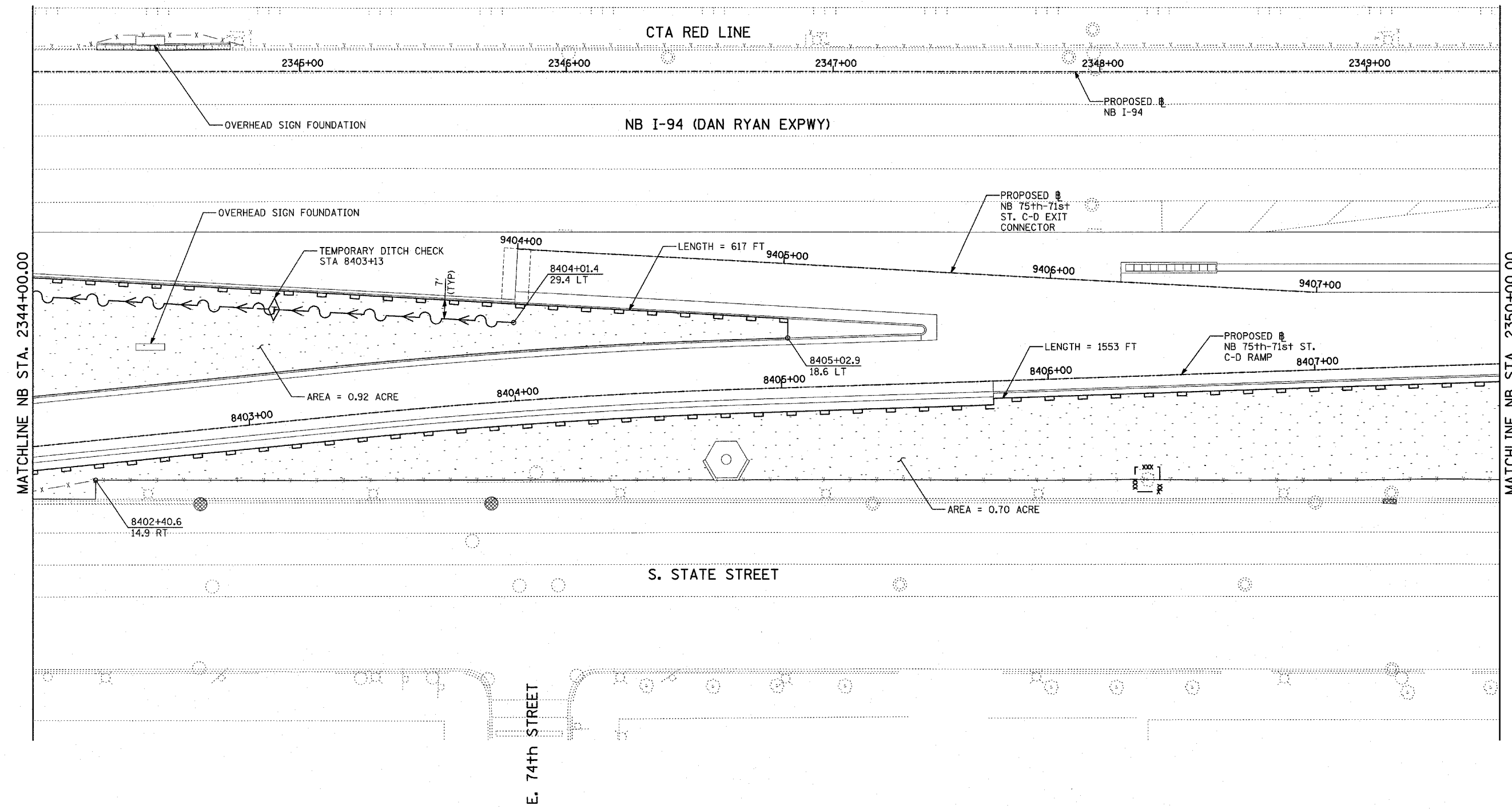
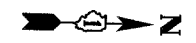
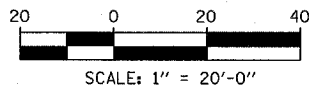


|                                    |         |          |                  |           |
|------------------------------------|---------|----------|------------------|-----------|
| F.A.I. RTE.                        | SECTION | COUNTY   | TOTAL SHEETS     | SHEET NO. |
| 94                                 | *       | COOK     | 860              | 182       |
| STA. 2200+00.00 TO STA. 2362+00.00 |         |          |                  |           |
| FED. ROAD DIST. NO.                |         | ILLINOIS | FED. AID PROJECT |           |
| * (1516.1, 1717 & 1818) R-8        |         | 62694    |                  |           |



LOCATION MAP



- LEGEND:**
- TEMPORARY EROSION CONTROL SEEDING
  - PERIMETER EROSION BARRIER
  - INLET FILTER, TO BE INSTALLED IN OFF PROJECT DRAINAGE STRUCTURES ACCEPTING STORMWATER RUNOFF
  - TEMPORARY FENCE
  - TEMPORARY DITCH
  - TEMPORARY DITCH CHECK
  - TEMPORARY FENCE FOR TREE PROTECTION (15 FEET PER SIDE = 60 FEET TOTAL)

| REVISIONS |      |
|-----------|------|
| NAME      | DATE |
|           |      |
|           |      |
|           |      |
|           |      |
|           |      |
|           |      |
|           |      |
|           |      |
|           |      |
|           |      |

ILLINOIS DEPARTMENT OF TRANSPORTATION  
 F.A.I. 94 (DAN RYAN EXPRESSWAY)  
 EROSION CONTROL PLAN  
 NB 75th TO 71st STREET C-D RAMP  
 NB I-94 STA. 2344+00.00 TO 2350+00.00

SCALE: 1"=20'  
 DATE: MARCH 18, 2005  
 DRAWN BY: JJS  
 CHECKED BY: JPM, MAG

TOTAL NUMBER OF TREES TO BE PROTECTED THIS SHEET = 1

TYLIN INTERNATIONAL

03/25/2005 09:33:50 PM