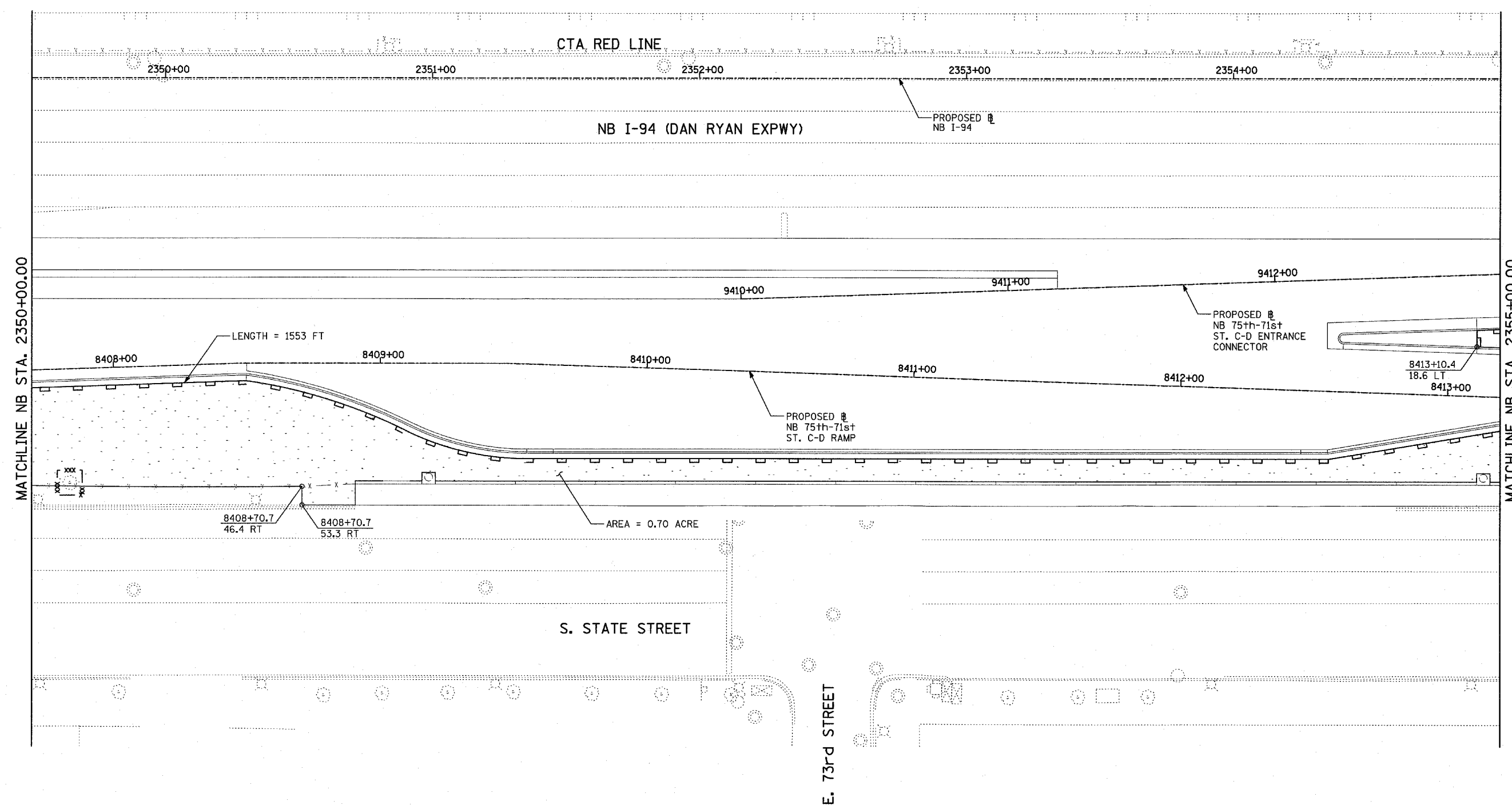
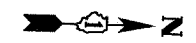
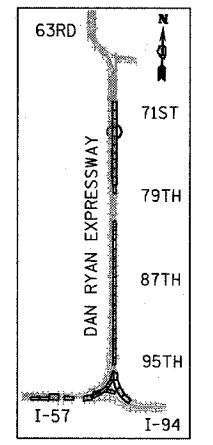


F.A.I. RTE.	SECTION	COUNTY	TOTAL SHEETS	SHEET NO.
94		COOK	860	183
STA. 2200+00.00 TO STA. 2362+00.00				
FED. ROAD DIST. NO.		ILLINOIS	FED. AID PROJECT	
				62694

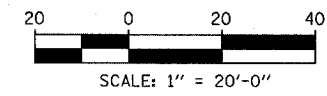


MATCHLINE NB STA. 2355+00.00

MATCHLINE NB STA. 2350+00.00



LOCATION MAP



- LEGEND:**
- TEMPORARY EROSION CONTROL SEEDING
 - PERIMETER EROSION BARRIER
 - INLET FILTER, TO BE INSTALLED IN OFF PROJECT DRAINAGE STRUCTURES ACCEPTING STORMWATER RUNOFF
 - TEMPORARY FENCE
 - TEMPORARY DITCH
 - TEMPORARY DITCH CHECK
 - TEMPORARY FENCE FOR TREE PROTECTION (15 FEET PER SIDE = 60 FEET TOTAL)

REVISIONS	
NAME	DATE

ILLINOIS DEPARTMENT OF TRANSPORTATION
F.A.I. 94 (DAN RYAN EXPRESSWAY)
EROSION CONTROL PLAN
NB 75th TO 71st STREET C-D RAMP
NB I-94 STA. 2350+00.00 TO 2355+00.00

SCALE: 1"=20'
DATE: MARCH 18, 2005
DRAWN BY: JJS
CHECKED BY: JPM, MAG

TOTAL NUMBER OF TREES TO BE PROTECTED THIS SHEET = 1

TYLIN INTERNATIONAL