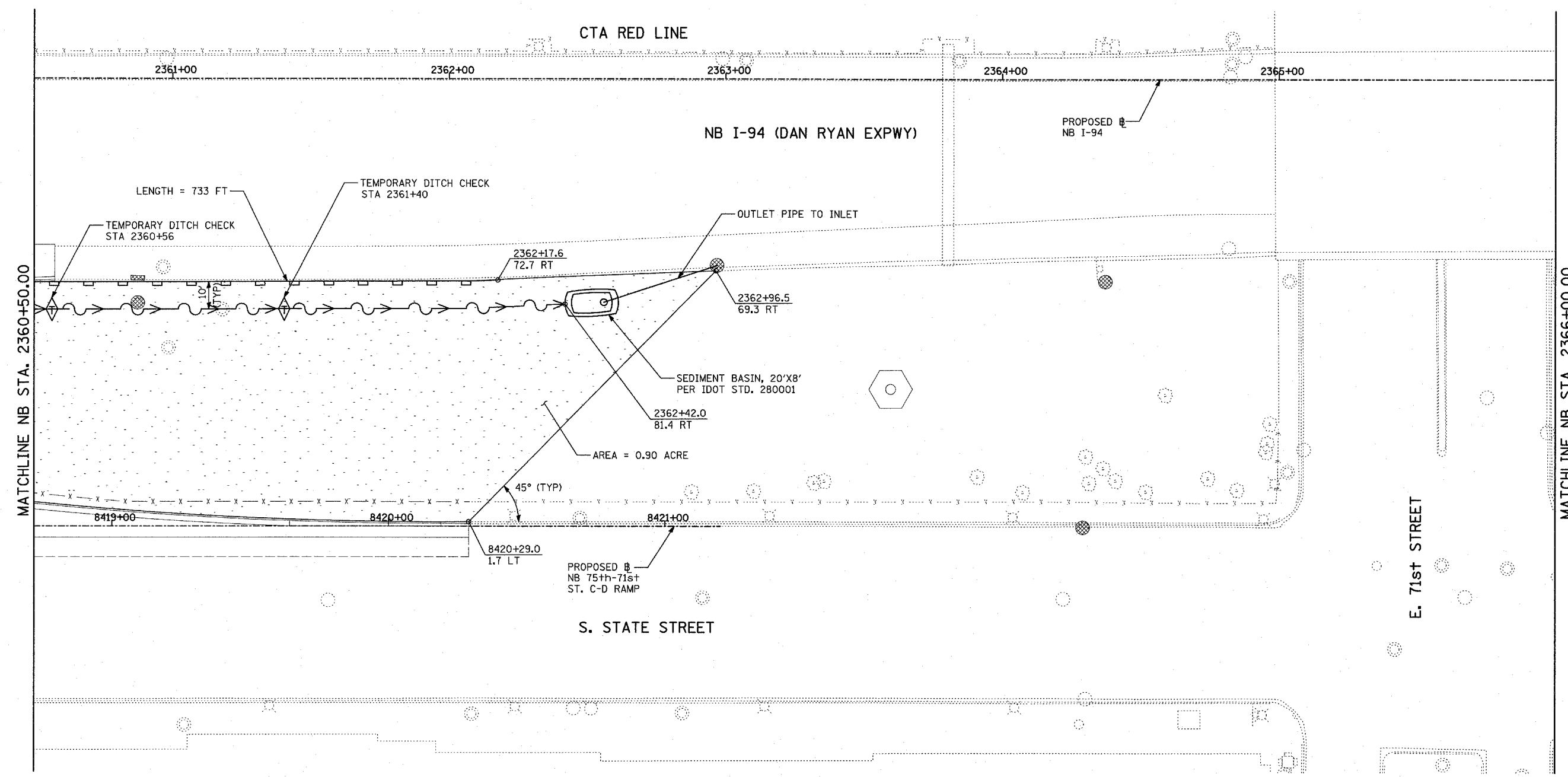
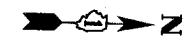
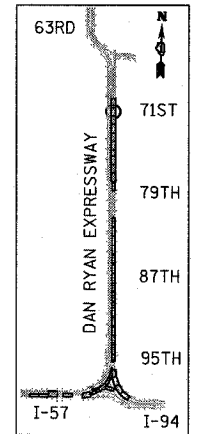


F.A.I. RTE.	SECTION	COUNTY	TOTAL SHEETS	SHEET NO.
94		COOK	860	185
STA. 2200+00.00 TO STA. 2362+00.00				
FED. ROAD DIST. NO.		ILLINOIS	FED. AID PROJECT	
				62694

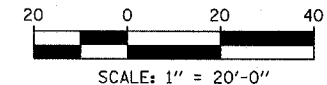


MATCHLINE NB STA. 2366+00.00

MATCHLINE NB STA. 2360+50.00



LOCATION MAP



- LEGEND:**
- TEMPORARY EROSION CONTROL SEEDING
 - PERIMETER EROSION BARRIER
 - INLET FILTER, TO BE INSTALLED IN OFF PROJECT DRAINAGE STRUCTURES ACCEPTING STORMWATER RUNOFF
 - TEMPORARY FENCE
 - TEMPORARY DITCH
 - TEMPORARY DITCH CHECK
 - TEMPORARY FENCE FOR TREE PROTECTION (15 FEET PER SIDE = 60 FEET TOTAL)

REVISIONS	
NAME	DATE

ILLINOIS DEPARTMENT OF TRANSPORTATION
 F.A.I. 94 (DAN RYAN EXPRESSWAY)
 EROSION CONTROL PLAN
 NB 75th TO 71st STREET C-D RAMP
 NB I-94 STA. 2360+50.00 TO 2366+00.00

SCALE: 1"=20'
 DATE: MARCH 18, 2005

DRAWN BY: JJS
 CHECKED BY: JPM, MAG

TYLIN INTERNATIONAL

03/25/2005 01:34:04 PM