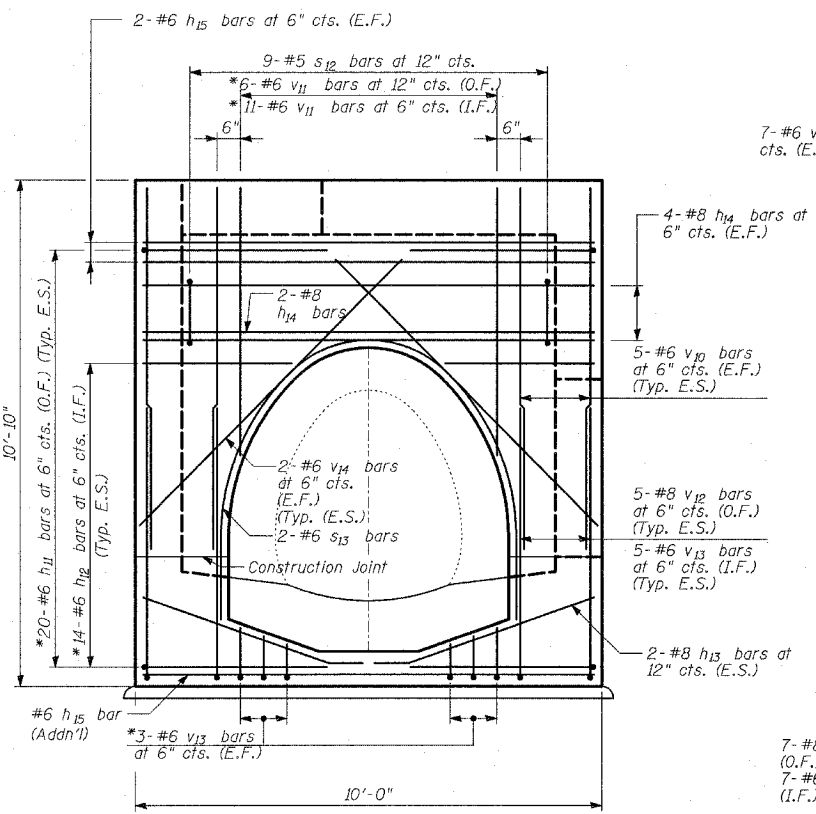
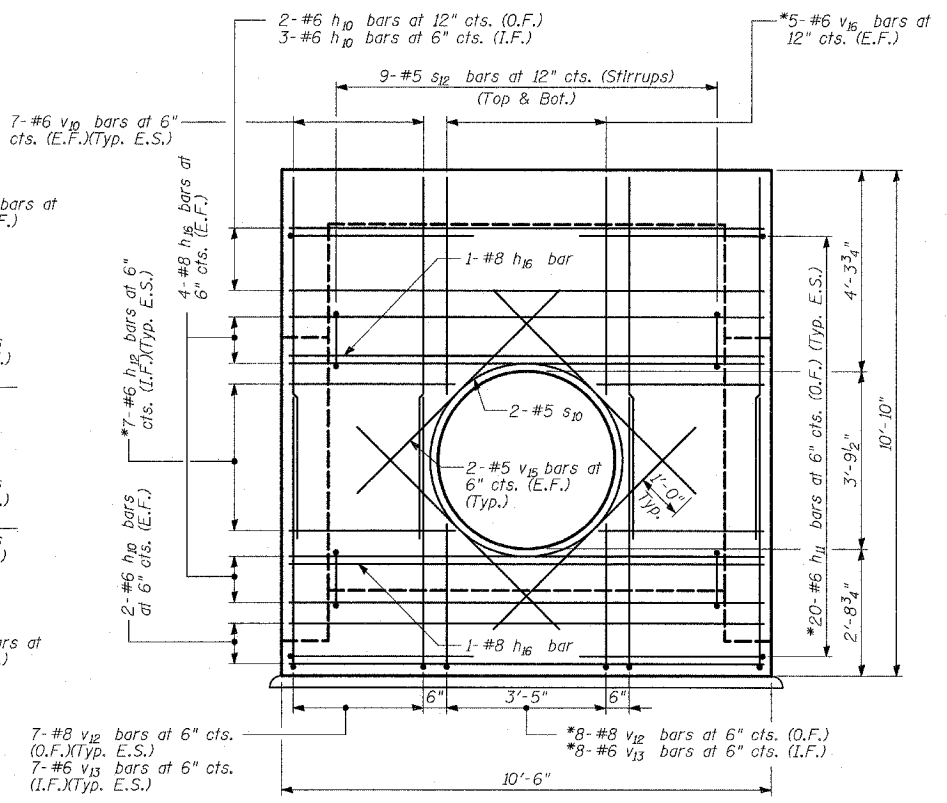


**BILL OF MATERIAL  
JUNCTION CHAMBER 3**

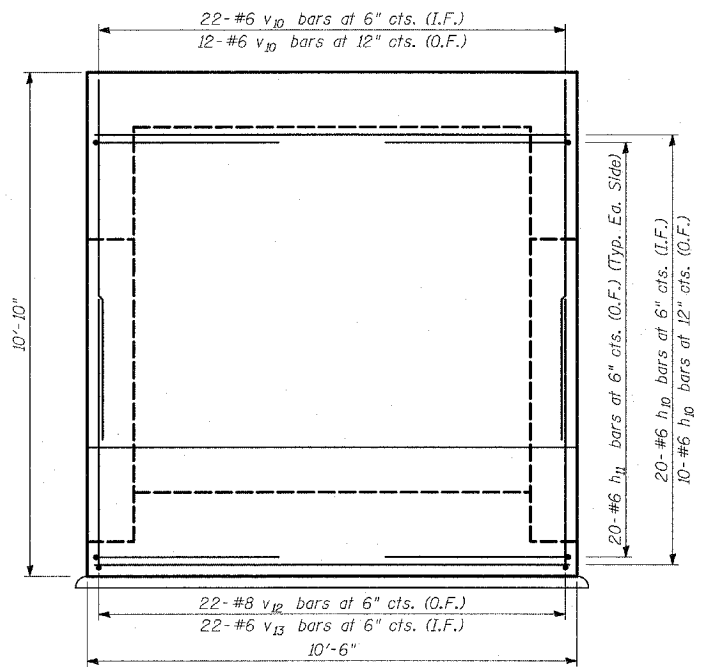
Bar	No.	Size	Length	Shape
a10	21	#6	10'-2"	—
a11	20	#6	11'-6"	—
a12	4	#8	10'-2"	—
a13	12	#5	5'-4"	—
a14	4	#5	2'-10"	—
a15	11	#5	8'-2"	—
a16	12	#6	12'-2"	—
a17	4	#8	12'-0"	—
h10	39	#6	10'-2"	—
h11	80	#6	7'-9"	L
h12	70	#6	5'-7"	L
h13	8	#8	5'-0"	—
h14	20	#8	9'-8"	—
h15	31	#6	9'-8"	—
h16	18	#8	10'-2"	—
h17	18	#5	6'-5"	—
h18	34	#6	11'-0"	—
h19	4	#8	9'-8"	—
h20	4	#8	11'-6"	—
v10	102	#6	7'-10"	—
v11	34	#6	5'-10"	—
v12	64	#8	8'-6"	L
v13	88	#6	6'-0"	L
v14	16	#6	8'-0"	—
v15	16	#5	6'-8"	—
v16	10	#6	5'-0"	—
s10	2	#5	15'-0"	○
s11	2	#5	12'-8"	○
s12	36	#5	5'-3"	□
s13	4	#6	15'-2"	◡
Reinforcement Bars	Pound	10,350		
Concrete Structures	Cu. Yard	21		



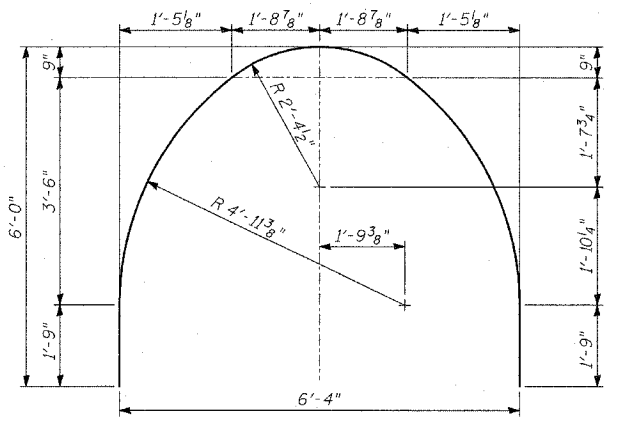
**SECTION B-B**  
(Opposite Wall Typical)



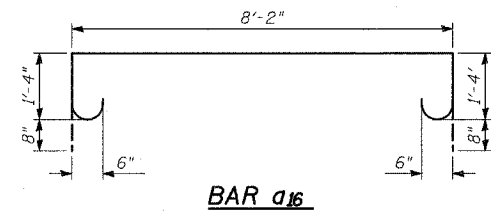
**SECTION E-E**



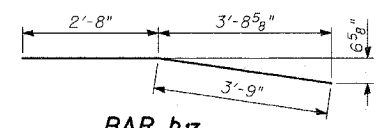
**SECTION D-D**



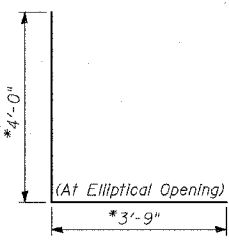
**BAR s13**



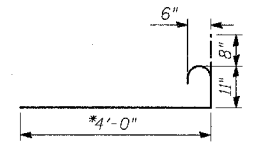
**BAR a16**



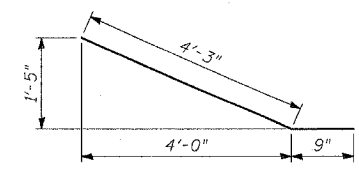
**BAR h17**



**BAR h11**



**BAR h12**



**BAR h13**

**NOTES:**

- All dimensions and elevations shall be field verified prior to construction.
- Concrete pipe sizes shall be coordinated with openings provided into Junction Chamber before pouring concrete.
- Manhole Frame, Ladder Rungs, and any inserts installation shall be coordinated with Roadway Plans.
- Concrete cover for reinforcement steel to be 2" unless otherwise noted.
- All concrete edges shall be chamfered 1 inch.
- All lap splices marked on the drawings are minimum.
- Concrete Compressive Strength  $f_c' = 3,500$  psi.
- Steel Yield Strength = 60,000 psi.
- Work this Sheet with Sheets 1 and 2 of 3.
- The Bill of Material is shown for reference only. See Sheet 1 of 3 for Pay Items.
- \* Cut bars to fit in field.
- E.F. - denotes Each Face
- E.S. - denotes Each Side
- I.F. - denotes Inside Face
- O.F. - denotes Outside Face

REVISIONS	
NAME	DATE

ILLINOIS DEPARTMENT OF TRANSPORTATION  
F.A.I. 94 (DAN RYAN EXPRESSWAY)  
**JUNCTION CHAMBER 3  
DETAILS 2**

S.N. \_\_\_\_\_ DESIGNED BY: TD, DE  
SCALE: \_\_\_\_\_ DRAWN BY: DE  
DATE: MARCH 18, 2005 CHECKED BY: MI, TD