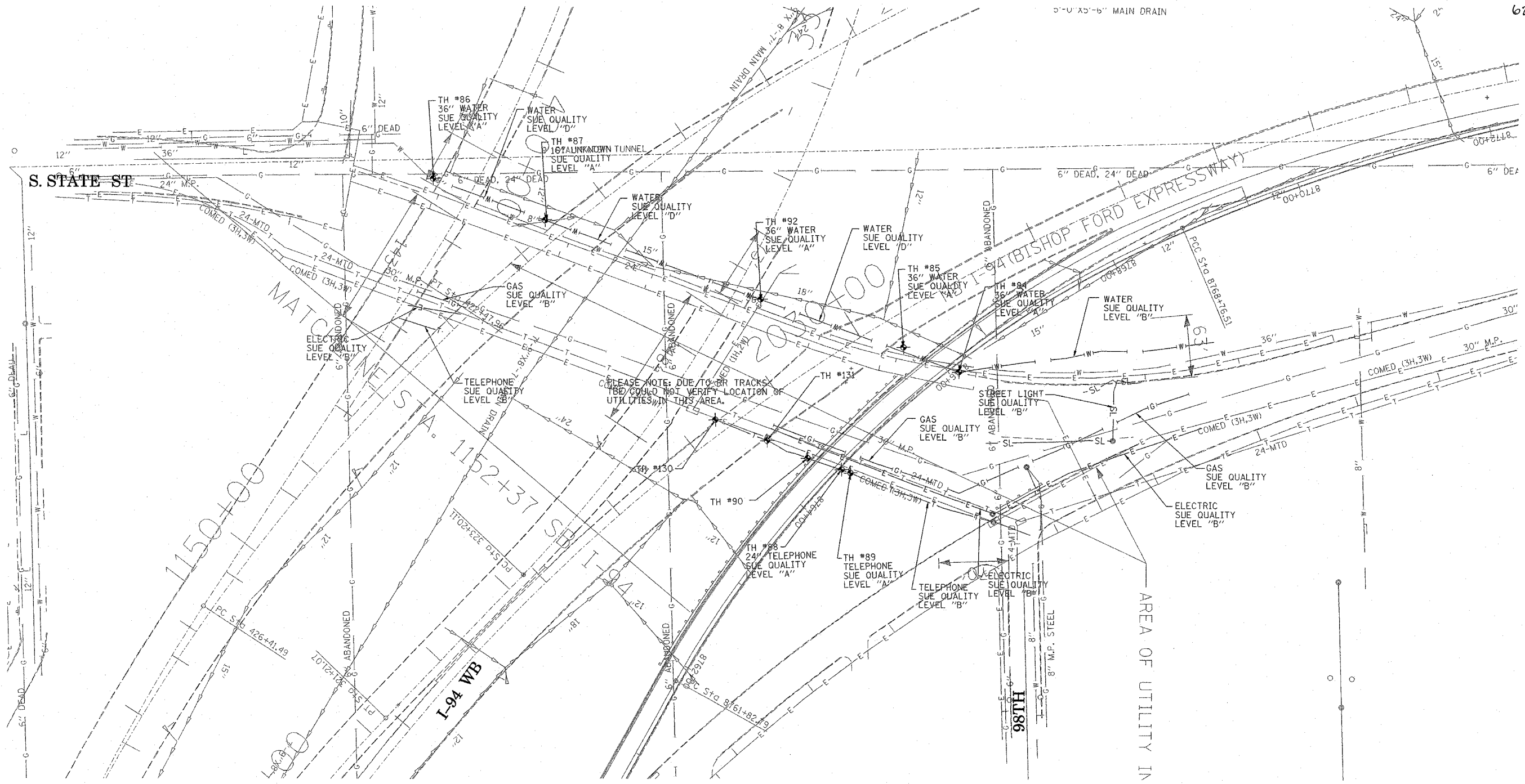
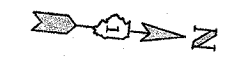


| | | | | |
|---------------------|---------------------------|--------|--------------|-----------|
| F.A. RTE. | SECTION | COUNTY | TOTAL SHEETS | SHEET NO. |
| | 1516, 1717 & 1818-6 | Cook | 860 | 269 |
| STA. | TO STA. | | | |
| FED. ROAD DIST. NO. | ILLINOIS FED. AID PROJECT | | | |

62694



TBE GROUP, INC.
 CIVIL ENGINEERING * TRANSPORTATION * ENVIRONMENTAL
 * PLANNING * UTILITY ENGINEERING/LOCATING
 SOUTHERN REGION: FL, GA, SC, NC
 NORTHERN REGION: IL, IN, MI, OH, MD, NJ, NY
 PA, VA, CANADA
 WESTERN REGION: AZ, NV, NM, TX, CA, OR, UT, WA

IL09500164, 167, 168, 170, 171, 179, 180, 182, 204,
 205, 206, 211, 212, 219, 221, 225, 226, 227, 228, 230
 TBE SUE PAGE NO: 3 of 36
 Checked by: *[Signature]* 3/14/05
 SUE Quality Level "A" : Test Holes
 SUE Quality Level "B" : Designating

| | | |
|--------|-------|--------------------------|
| —TS— | —TS— | TRAFFIC SIGNAL |
| —SL— | —SL— | STREET LIGHT |
| —COCE— | | CITY OF CHICAGO ELECTRIC |
| —T— | —T— | TELEPHONE |
| —W— | —W— | WATER |
| —G— | —G— | GAS |
| —CTV— | —CTV— | CABLE TELEVISION |
| —FO— | —FO— | FIBER OPTIC |
| —E— | —E— | ELECTRIC |
| ● | | TEST HOLE |

Utilities shown on these plans as depicted in the legend have been investigated by TBE Group, Inc in accordance with SUE Industry Standards. All other information shown has been provided to TBE Group, Inc by others.

TBE could not locate buried utilities directly beneath the expressway due to traffic and safety issues.

| | | | |
|--|-----------|------|--|
| 205 W. WACKER DRIVE SUITE 1020 CHICAGO, IL 60606 (312) 704-1970 | REVISIONS | | ILLINOIS DEPARTMENT OF TRANSPORTATION SUE Investigation of Underground Utilities I-94 NB & SB of Dan Ryan Expressway From I-57 to 43rd Street Contract No: 62586, 62589, 62590, 62594, 62693 SOL "A" DATE : 2/17/05 SOL "B" DATE : 7/22/04 DRAWN BY : KLC SCALE : 1" = 50' |
| | NAME | DATE | |
| | | | |
| | | | |
| | | | |