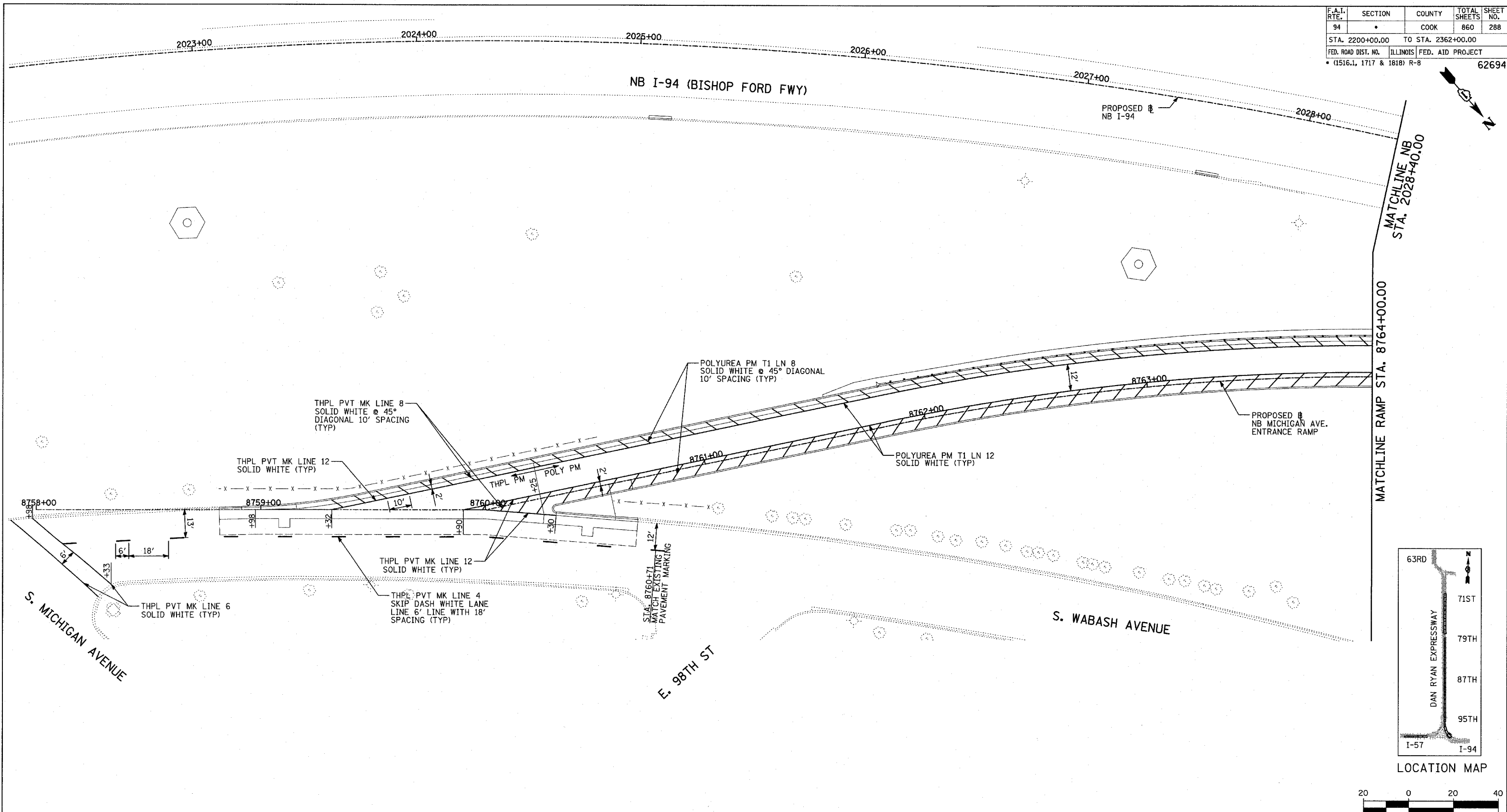
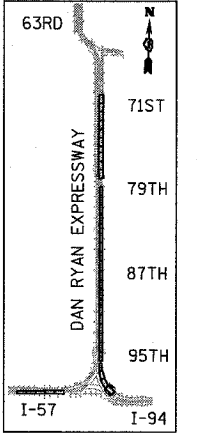


F.A.I. RTE.	SECTION	COUNTY	TOTAL SHEETS	SHEET NO.
94		COOK	860	288
STA. 2200+00.00		TO STA. 2362+00.00		
FED. ROAD DIST. NO.		ILLINOIS FED. AID PROJECT		
(1516.1, 1717 & 1818) R-8				62694

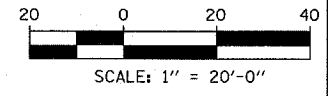


MATCHLINE NB  
STA. 2028+40.00

MATCHLINE RAMP STA. 8764+00.00



LOCATION MAP



**PAVEMENT MARKING NOTES:**

- PAVEMENT MARKINGS SHALL BE IN ACCORDANCE WITH IDOT DISTRICT ONE STANDARD TC-12. RAISED PAVEMENT MARKERS SHALL NOT BE INSTALLED, EXCEPT AS SHOWN ON THE PLANS.
- THE RESIDENT ENGINEER SHALL CONTACT JULIA FOX (847) 705-4151, EXPRESSWAY TRAFFIC CONTROL SUPERVISOR, PRIOR TO PLACING ANY PAVEMENT MARKINGS.

REVISIONS	
NAME	DATE

ILLINOIS DEPARTMENT OF TRANSPORTATION  
**F.A.I. 94 (DAN RYAN EXPRESSWAY)**  
**PAVEMENT MARKING**  
**NB MICHIGAN AVENUE ENTRANCE RAMP**  
**MICHIGAN AVE. TO NB I-94 STA. 2028+40**  
 SCALE: 1"=20'  
 DATE: MARCH 18, 2005  
 DRAWN BY: TB  
 CHECKED BY: MPG

**TYLIN** INTERNATIONAL

03/25/2005 01:35:00 PM