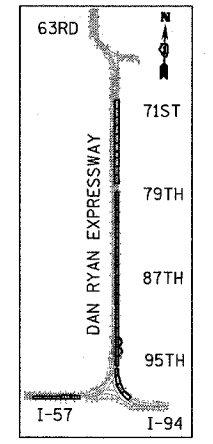
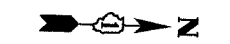
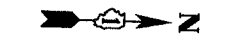
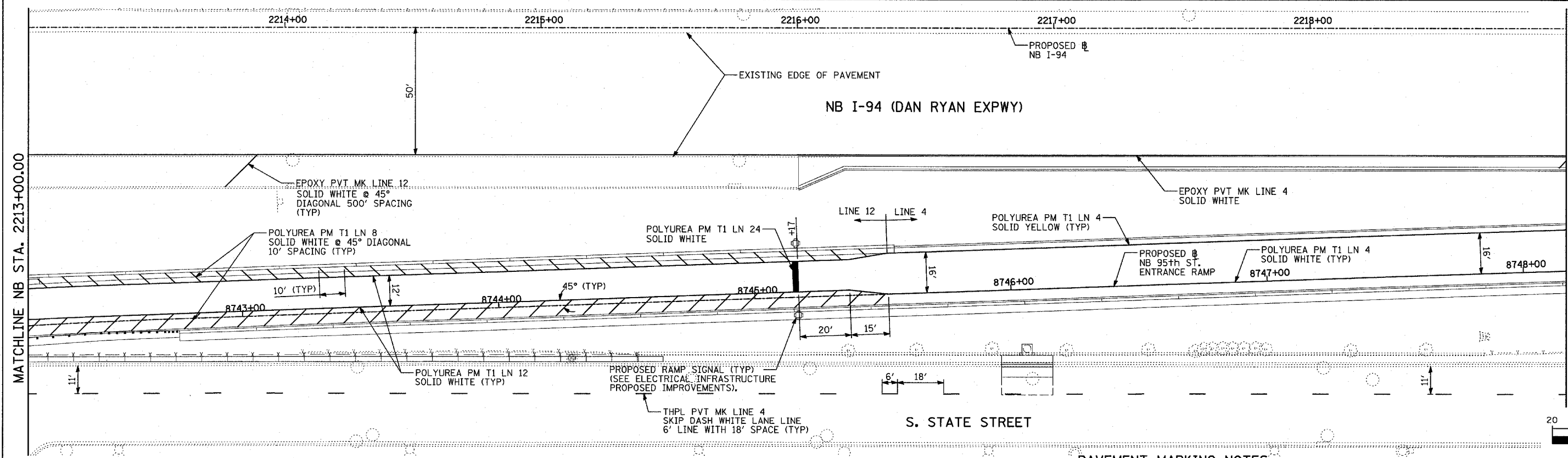
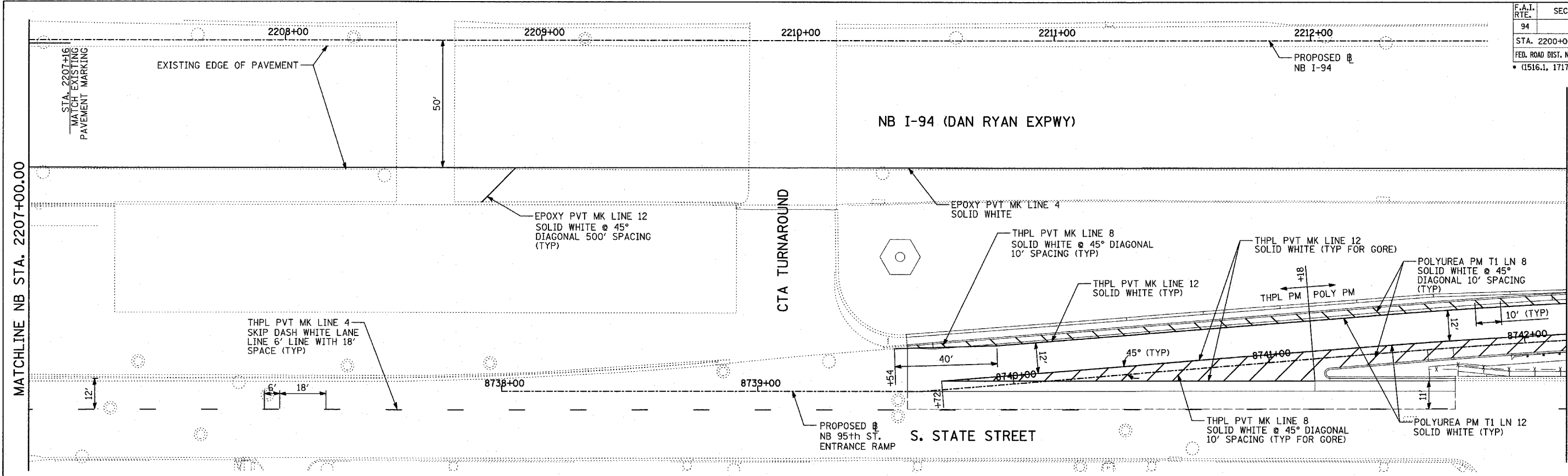
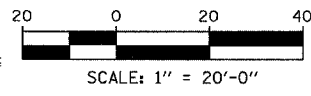


F.A.I. RTE.	SECTION	COUNTY	TOTAL SHEETS	SHEET NO.
94		COOK	860	292
STA. 2200+00.00 TO STA. 2362+00.00				
FED. ROAD DIST. NO. ILLINOIS FED. AID PROJECT				
• (1516.1, 1717 & 1818) R-8				
				62694



LOCATION MAP



**PAVEMENT MARKING NOTES:**

- PAVEMENT MARKINGS SHALL BE IN ACCORDANCE WITH IDOT DISTRICT ONE STANDARD TC-12. RAISED PAVEMENT MARKERS SHALL NOT BE INSTALLED, EXCEPT AS SHOWN ON THE PLANS.
- THE RESIDENT ENGINEER SHALL CONTACT JULIA FOX (847) 705-4151, EXPRESSWAY TRAFFIC CONTROL SUPERVISOR, PRIOR TO PLACING ANY PAVEMENT MARKINGS.

REVISIONS	
NAME	DATE

ILLINOIS DEPARTMENT OF TRANSPORTATION  
**F.A.I. 94 (DAN RYAN EXPRESSWAY)**  
**PAVEMENT MARKING**  
**NB 95th STREET ENTRANCE RAMP**  
**NB I-94 STA. 2207+00.00 TO 2219+00.00**

SCALE: 1"=20'  
DATE: MARCH 18, 2005

DRAWN BY: TB  
CHECKED BY: MPG

**TYLIN**INTERNATIONAL

03/25/2005 01:35:26 PM