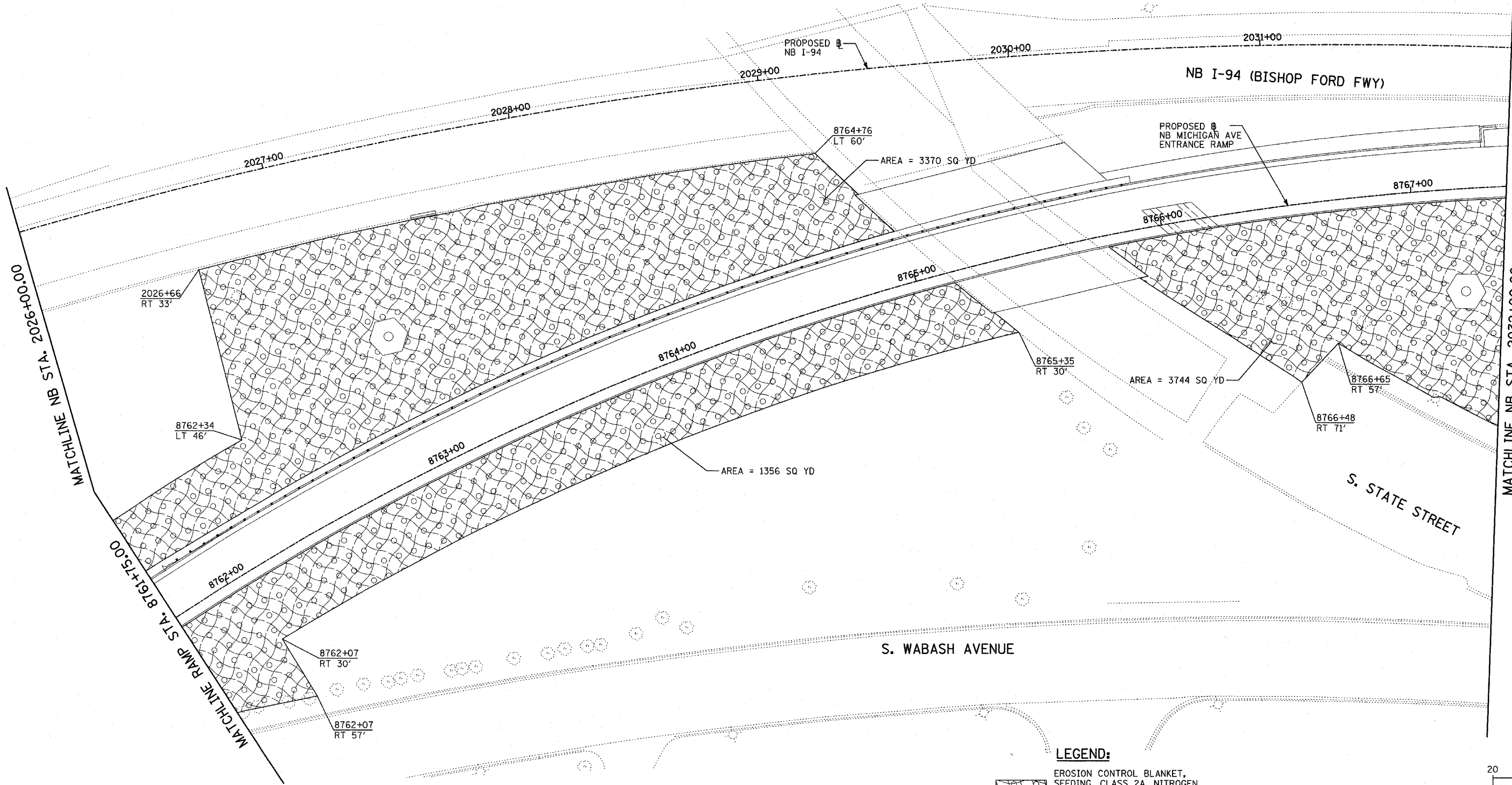
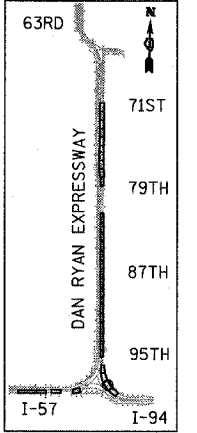


F.A.I. RTE.	SECTION	COUNTY	TOTAL SHEETS	SHEET NO.
94		COOK	860	316
STA. 2200+00.00		TO STA. 2362+00.00		
FED. ROAD DIST. NO.	ILLINOIS FED. AID PROJECT			
(1516.1, 1717 & 1818) R-8		62694		

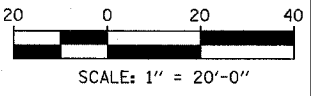


MATCHLINE NB STA. 2032+00.00

MATCHLINE NB STA. 2026+00.00



LOCATION MAP



LEGEND:

- EROSION CONTROL BLANKET, SEEDING, CLASS 2A, NITROGEN, PHOSPHORUS, AND POTASSIUM FERTILIZER NUTRIENTS, TOPSOIL FURNISH AND PLACE, 4"
- EROSION CONTROL BLANKET, SEEDING, CLASS 2A, NITROGEN, PHOSPHORUS, AND POTASSIUM FERTILIZER NUTRIENTS, TOPSOIL FURNISH AND PLACE, 12" COMPOST FURNISH AND PLACE, 6"
- TOPSOIL FURNISH AND PLACE, 12" COMPOST FURNISH AND PLACE, 6" 4" MULCH BED PRE-EMERGENT GRANULAR HERBICIDE

REVISIONS	
NAME	DATE

ILLINOIS DEPARTMENT OF TRANSPORTATION
F.A.I. 94 (DAN RYAN EXPRESSWAY)
LANDSCAPING PLAN
NB MICHIGAN AVENUE ENTRANCE RAMP
NB I-94 STA. 2026+00.00 TO STA. 2032+00.00

SCALE: 1"=20'
DATE: MARCH 18, 2005

DRAWN BY: JJS
CHECKED BY: MPG

TYLIN INTERNATIONAL

03/25/2005 01:38:02 PM