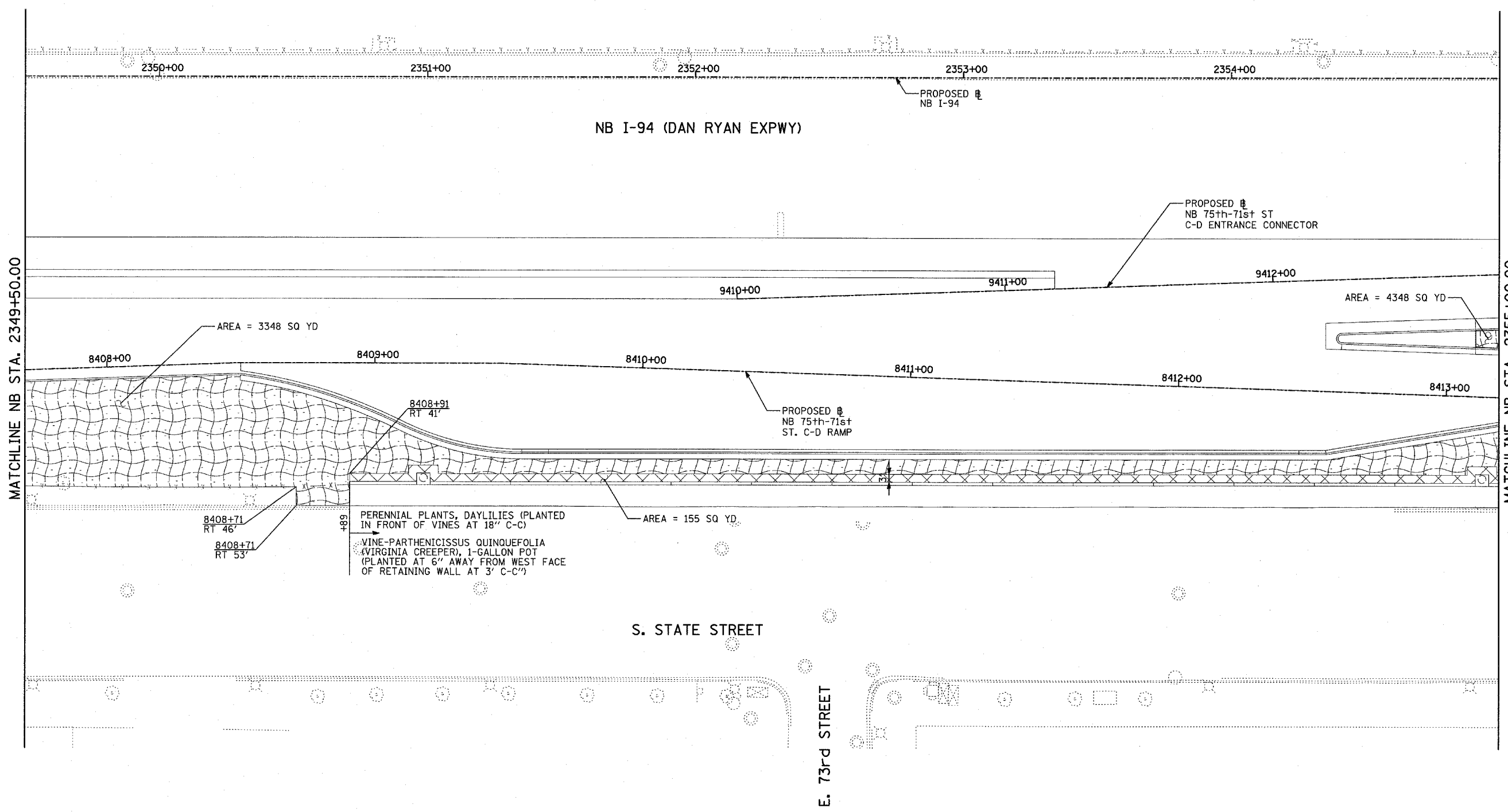
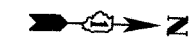


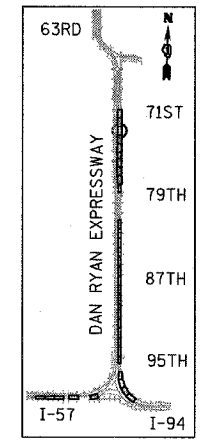
F.A.I. RTE.	SECTION	COUNTY	TOTAL SHEETS	SHEET NO.
94		COOK	860	335
STA. 2200+00.00 TO STA. 2362+00.00				
FED. ROAD DIST. NO. ILLINOIS FED. AID PROJECT				
* (1516.1, 1717 & 1818) R-8				

62694

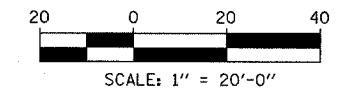


MATCHLINE NB STA. 2355+00.00

MATCHLINE NB STA. 2349+50.00



LOCATION MAP



**LEGEND:**

- EROSION CONTROL BLANKET, SEEDING, CLASS 2A, NITROGEN, PHOSPHORUS, AND POTASSIUM FERTILIZER NUTRIENTS, TOPSOIL FURNISH AND PLACE, 4"
- EROSION CONTROL BLANKET, SEEDING, CLASS 2A, NITROGEN, PHOSPHORUS, AND POTASSIUM FERTILIZER NUTRIENTS, TOPSOIL FURNISH AND PLACE, 12" COMPOST FURNISH AND PLACE, 6"
- TOPSOIL FURNISH AND PLACE, 12" COMPOST FURNISH AND PLACE, 6" 4" MULCH BED PRE-EMERGENT GRANULAR HERBICIDE

REVISIONS	
NAME	DATE

ILLINOIS DEPARTMENT OF TRANSPORTATION  
 F.A.I. 94 (DAN RYAN EXPRESSWAY)  
 LANDSCAPING PLAN  
 NB 75th TO 71st STREET C-D RAMP  
 NB I-94 STA. 2349+50.00 TO 2355+00.00

SCALE: 1"=20'  
 DATE: MARCH 18, 2005  
 DRAWN BY: JJS  
 CHECKED BY: MPG

**TYLIN** INTERNATIONAL

03/25/2005 01:40:27 PM