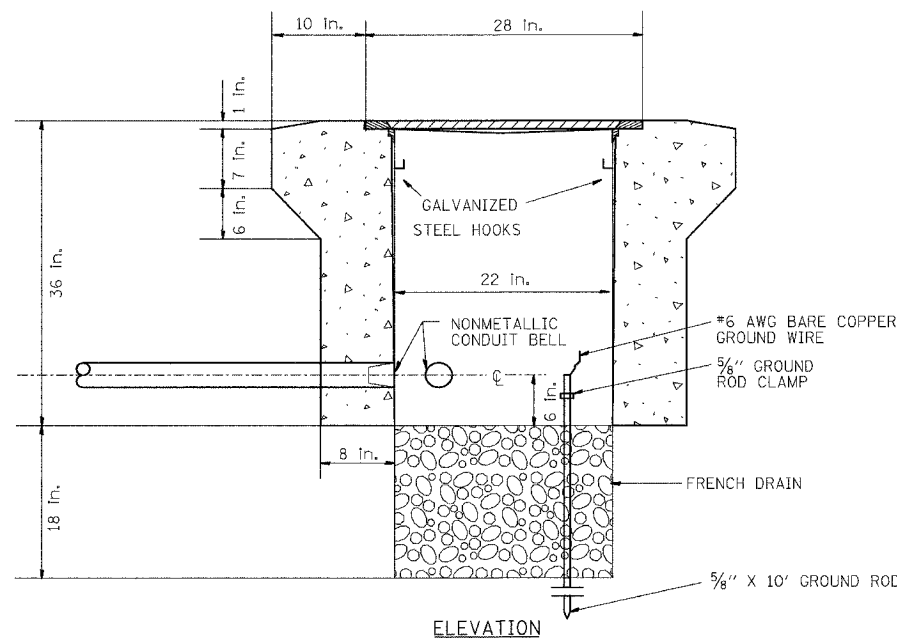
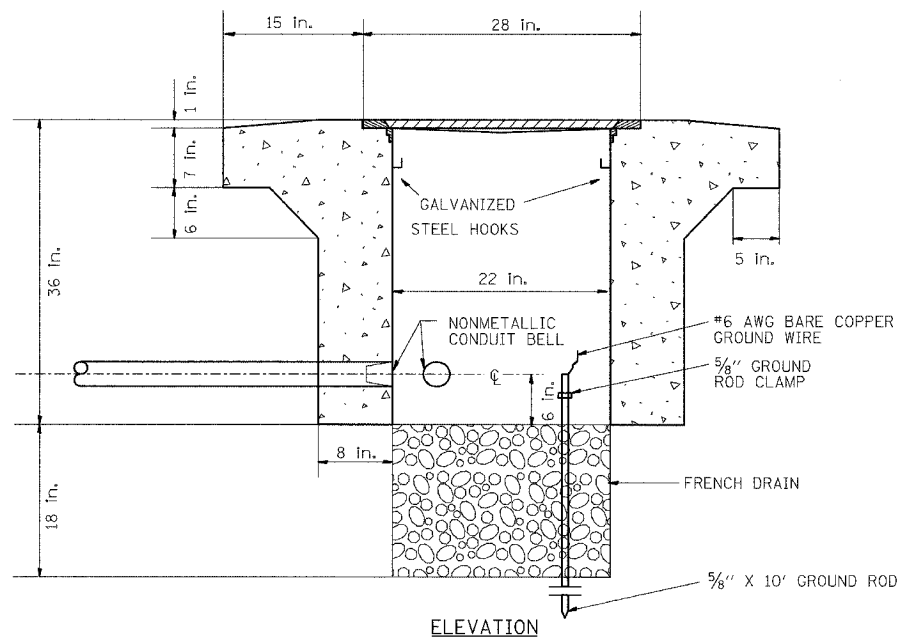
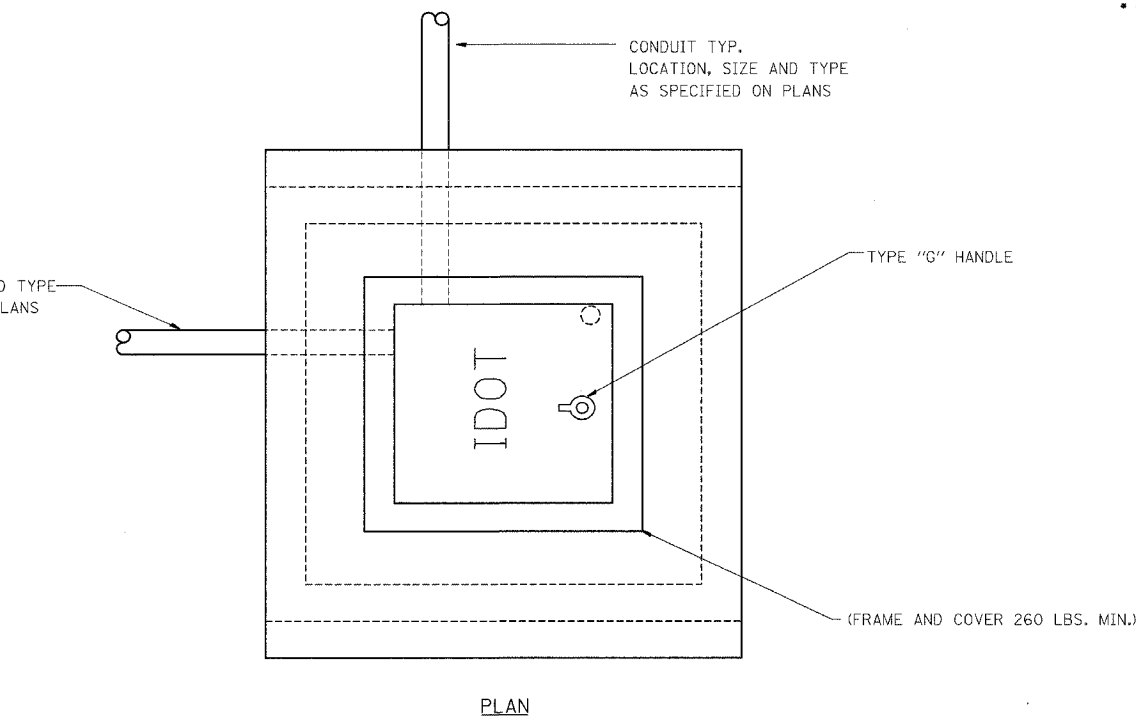
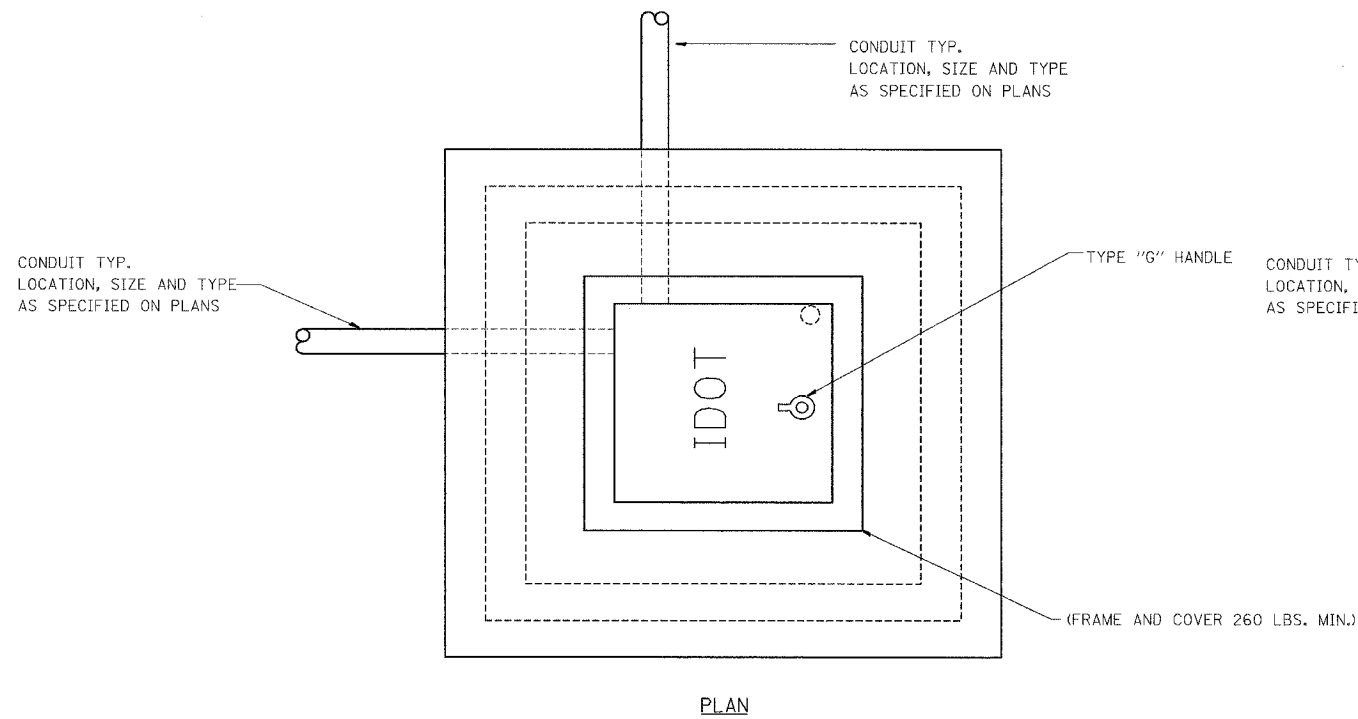


F.A.I. RTE.	SECTION	COUNTY	TOTAL SHEETS	SHEET NO.
94	*	COOK	860	343
STA.	TO STA.			
FED. ROAD DIST. NO. 1	ILLINOIS	FED. AID PROJECT		
* (1516, 1717 & 1818) R-8			62694	

J:\NTS\contract 17a details\el090\0626e.rvt



NOTE:
ALL METALLIC ELEMENTS SHALL BE GROUND IN ACCORDANCE WITH THE NATIONAL ELECTRIC CODE (NEC), SECTION 250, GROUNDING. METAL COVERS AND OTHER EXPOSED CONDUCTIVE SURFACES SHALL BE BONDED IN ACCORDANCE WITH NEC ARTICLE 250.96 (A).

PC CONCRETE - HEAVY DUTY HANDHOLE

PC CONCRETE - HEAVY DUTY HANDHOLE (SPECIAL)

17A/EI-106

Edwards AND Kelcey
ONE NORTH FRANKLIN CHICAGO, IL 60606
PHONE: (312) 251-3000
FAX: (312) 251-3015
WEB: WWW.EKCORP.COM

REVISIONS	
NAME	DATE

ILLINOIS DEPARTMENT OF TRANSPORTATION
F.A.I. 90/94 (DAN RYAN EXPRESSWAY)
**PC CONCRETE - HEAVY DUTY HANDHOLE
DETAIL (TYPE S1)**
SCALE: NTS
DATE: MARCH 18, 2005
DRAWN BY: CJH
CHECKED BY: MJL

4:46:01 PM 3/24/2005