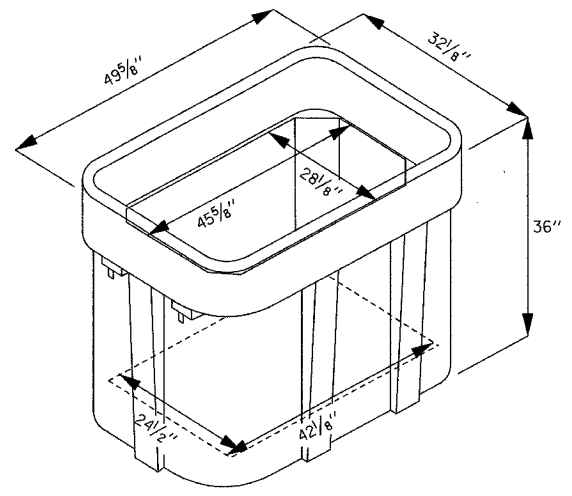
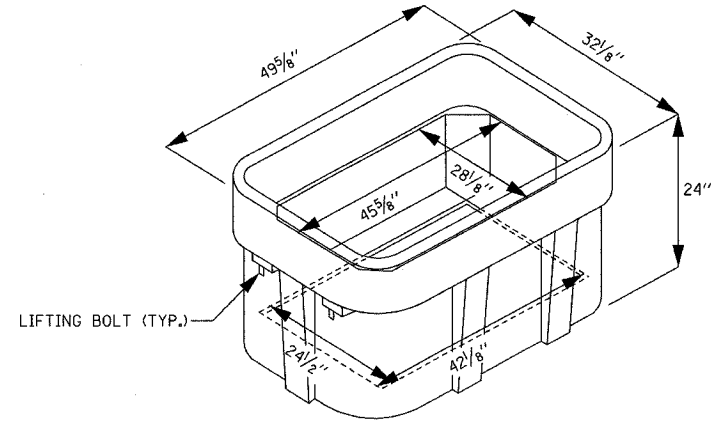
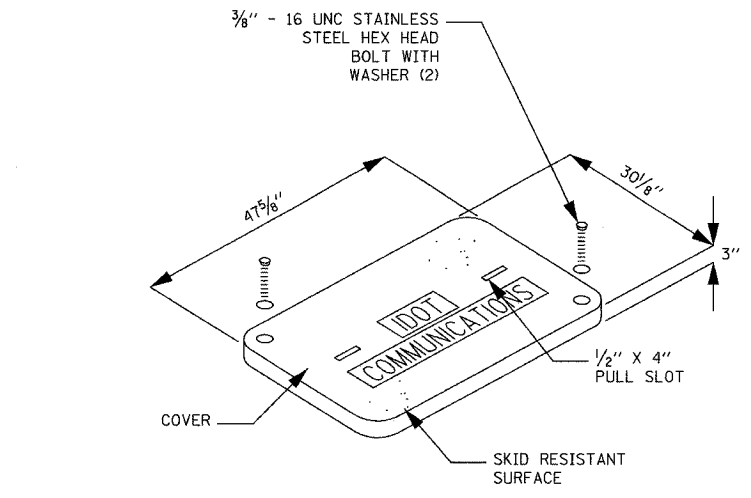
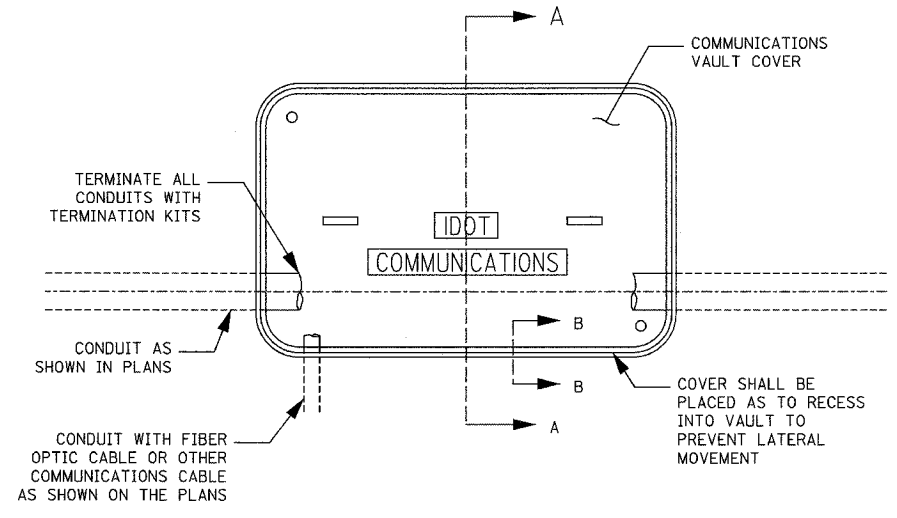
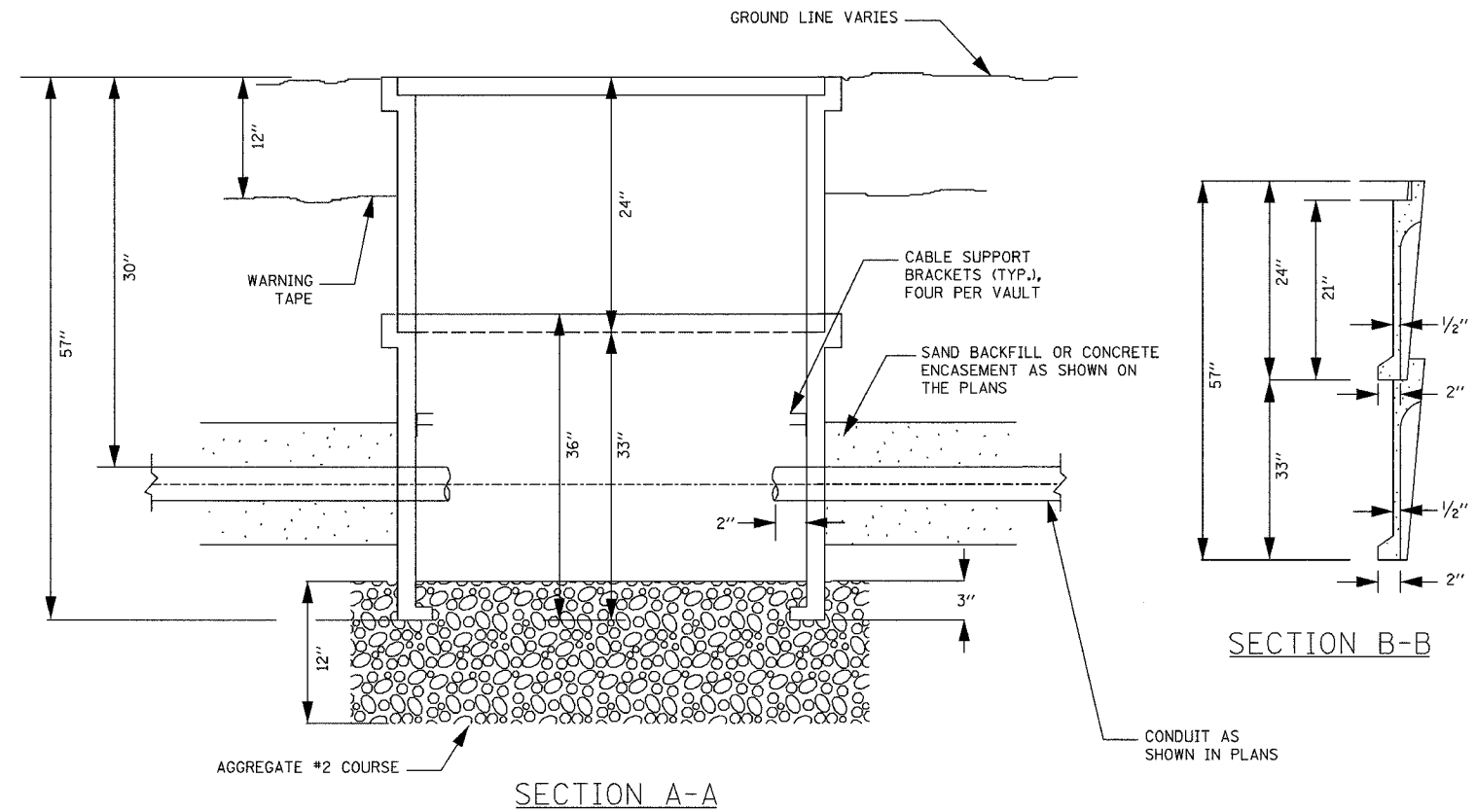


F.A.I. RTE.	SECTION	COUNTY	TOTAL SHEETS	SHEET NO.
94	*	COOK	860	344
STA. --- TO STA. ---		FED. ROAD DIST. NO. 1 ILLINOIS FED. AID PROJECT		
* (1516,1,1717 & 1818) R-8		62694		



ISOMETRIC



NOTES:

1. BOX SHALL HAVE AN OPEN BASE.
2. COVER SHALL WITHSTAND AASHTO H 20 LOADING AND SHALL LOCK.
3. ALL OPENINGS IN STRUCTURE MUST BE MACHINED AT TIME OF FABRICATION OR PUNCH DRIVEN AT TIME OF PLACEMENT.
4. FIELD PLACEMENT OF COMMUNICATIONS VAULT SHALL BE AS DIRECTED BY THE ENGINEER.

Edwards AND Kelcey
 ONE NORTH FRANKLIN CHICAGO, IL 60606
 PHONE: (312) 251-3000
 FAX: (312) 251-3015
 WEB: WWW.EKCORP.COM

REVISIONS	
NAME	DATE

ILLINOIS DEPARTMENT OF TRANSPORTATION
 F.A.I. 90/94 (DAN RYAN EXPRESSWAY)
 COMMUNICATIONS VAULT DETAILS
 (HANDHOLE TYPE C1)
 SCALE: NTS
 DATE: MARCH 18, 2005
 DRAWN BY: MJL
 CHECKED BY: AAP

17A/EI-107

3/24/2005 4:46:02 PM