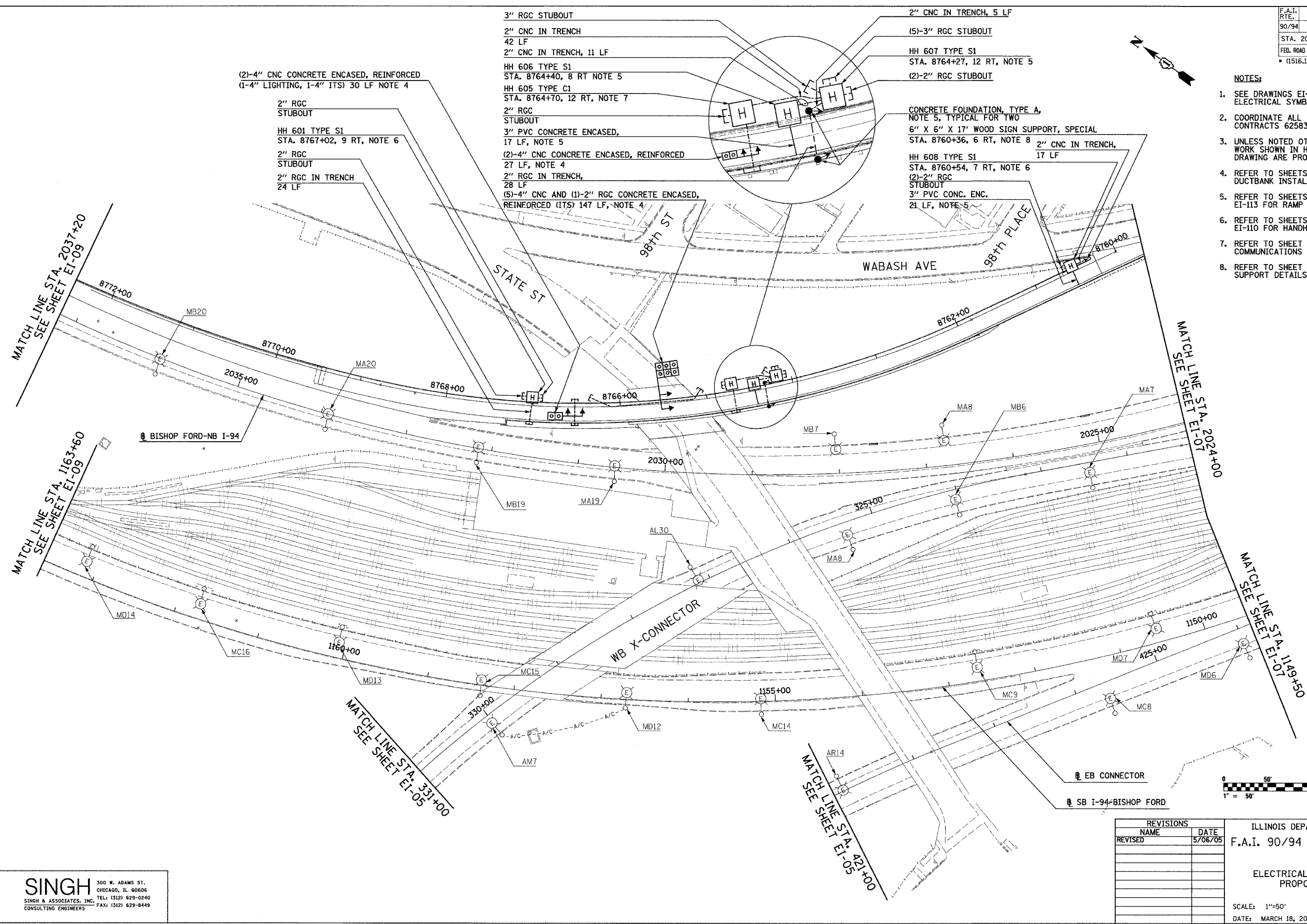


F.A.I. RTE.	SECTION	COUNTY	TOTAL SHEETS	SHEET NO.
90/94	*	COOK	860	381
STA. 2037+20		TO STA. 2024+00		
FED. ROAD DIST. NO.	ILLINOIS	FED. AID PROJECT		
* (1516,1,1717 & 1818) R-8				62694

NOTES:

- SEE DRAWINGS EI-100 AND EI-101 FOR ELECTRICAL SYMBOLS AND ABBREVIATIONS.
- COORDINATE ALL WORK WITH IDOT CONTRACTS 62583 AND 62695.
- UNLESS NOTED OTHERWISE, ALL ITEMS AND WORK SHOWN IN HEAVY LINE WEIGHT ON THIS DRAWING ARE PROPOSED NEW ITEMS AND WORK.
- REFER TO SHEETS EI-102 AND ME-04 FOR DUCTBANK INSTALLATION DETAILS.
- REFER TO SHEETS EI-106, EI-110 AND EI-113 FOR RAMP METERING DETAILS.
- REFER TO SHEETS EI-103, EI-106 AND EI-110 FOR HANDHOLE DETAILS.
- REFER TO SHEET EI-107 FOR COMMUNICATIONS VAULT C1 DETAILS.
- REFER TO SHEET EI-112 FOR WOOD SIGN SUPPORT DETAILS.



(2)-4" CNC CONCRETE ENCASED, REINFORCED
(1-4" LIGHTING, 1-4" ITS) 30 LF NOTE 4

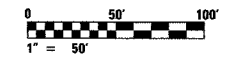
2" RGC STUBOUT
HH 601 TYPE S1
STA. 8767+02, 9 RT, NOTE 6
2" RGC STUBOUT
2" RGC IN TRENCH
24 LF

3" RGC STUBOUT
2" CNC IN TRENCH
42 LF
2" CNC IN TRENCH, 11 LF
HH 606 TYPE S1
STA. 8764+40, 8 RT NOTE 5
HH 605 TYPE C1
STA. 8764+70, 12 RT, NOTE 7

2" RGC STUBOUT
3" PVC CONCRETE ENCASED,
17 LF, NOTE 5
(2)-4" CNC CONCRETE ENCASED, REINFORCED
27 LF, NOTE 4
2" RGC IN TRENCH,
28 LF
(5)-4" CNC AND (1)-2" RGC CONCRETE ENCASED,
REINFORCED (ITS) 147 LF, NOTE 4

2" CNC IN TRENCH, 5 LF
(5)-3" RGC STUBOUT
HH 607 TYPE S1
STA. 8764+27, 12 RT, NOTE 5
(2)-2" RGC STUBOUT

CONCRETE FOUNDATION, TYPE A,
NOTE 5, TYPICAL FOR TWO
6" X 6" X 17" WOOD SIGN SUPPORT, SPECIAL
STA. 8760+36, 6 RT, NOTE 8
2" CNC IN TRENCH,
17 LF
HH 608 TYPE S1
STA. 8760+54, 7 RT, NOTE 6
(2)-2" RGC STUBOUT
3" PVC CONC. ENC.
21 LF, NOTE 5



17A/EI-06

SINGH
SINGH & ASSOCIATES, INC.
CONSULTING ENGINEERS

300 W. ADAMS ST.
CHICAGO, IL 60606
TEL: (312) 629-0240
FAX: (312) 629-8449

REVISIONS		
REVISED	NAME	DATE

ILLINOIS DEPARTMENT OF TRANSPORTATION
F.A.I. 90/94 (DAN RYAN EXPRESSWAY)

ELECTRICAL INFRASTRUCTURE PLANS
PROPOSED IMPROVEMENTS

SCALE: 1"=50'
DATE: MARCH 18, 2005

DRAWN BY: VK
CHECKED BY: TM

4/27/2005 11:42:09 AM