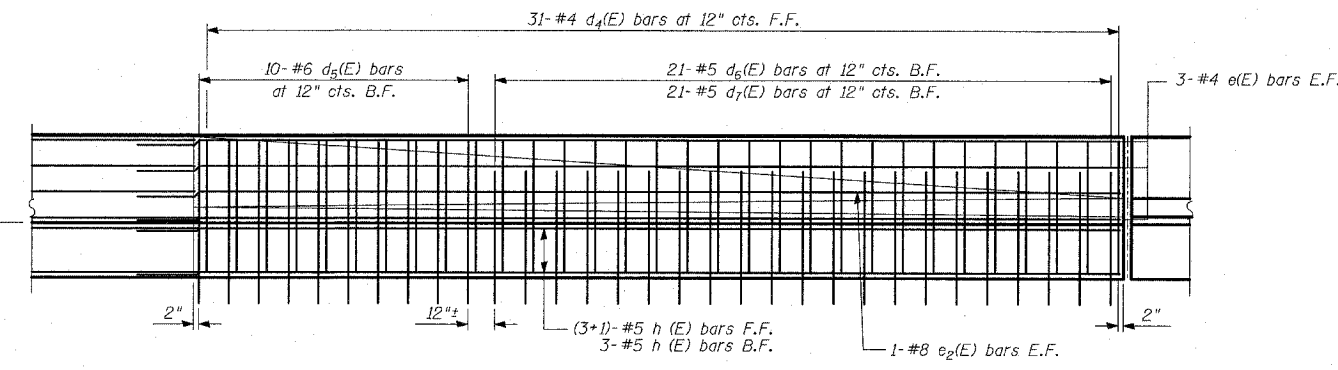


**PLAN**

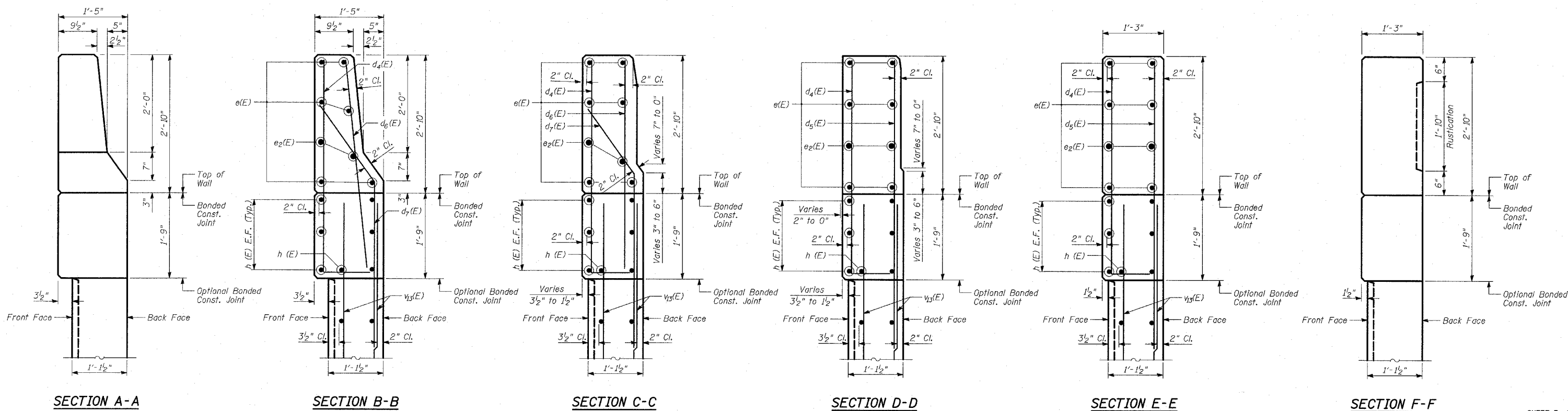


**BACK FACE ELEVATION - TRANSITION - MODIFIED TYPE F BARRIER TO FLUTED PARAPET - REINFORCEMENT**

(From Sta. 2212+47.99 to Sta. 2212+18.08)

**BACK FACE ELEVATION - TRANSITION - MODIFIED TYPE F BARRIER TO FLUTED PARAPET - CONCRETE DIMENSIONS**

(From Sta. 2212+47.99 to Sta. 2212+18.08)



**SECTION A-A**

**SECTION B-B**

**SECTION C-C**

**SECTION D-D**

**SECTION E-E**

**SECTION F-F**

**NOTES:**

1. B.F. - denotes Back Face.
2. E.F. - denotes Each Face.
3. F.F. - denotes Front Face.
4. Work this sheet with Sheets 1, 3, 5 and 6 of 20.
5. For Lap Splices, see Sheet 8 of 20.

**TYLIN INTERNATIONAL**

REVISIONS	
NAME	DATE

ILLINOIS DEPARTMENT OF TRANSPORTATION  
 F.A.I. 94 (DAN RYAN EXPRESSWAY)  
 RETAINING WALL ALONG STATE ST.  
 ENTRANCE RAMP AT 95TH ST.  
 WALL 1  
 PARAPET TRANSITION  
 S.N. 016-W943 DESIGNED BY: MI, MAF  
 SCALE: N.T.S. DRAWN BY: MAF, TB  
 DATE: MARCH 18, 2005 CHECKED BY: TD, MI