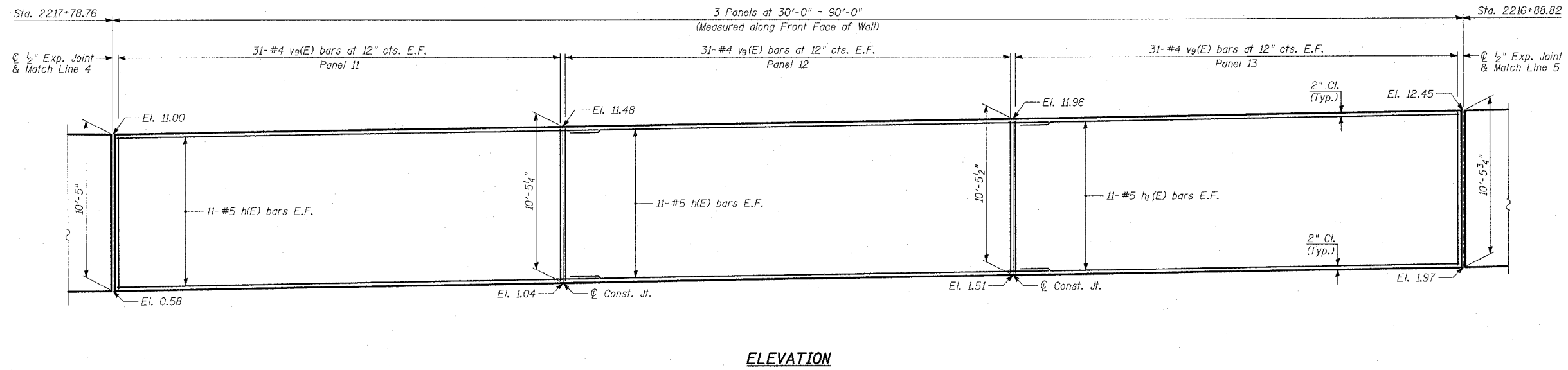
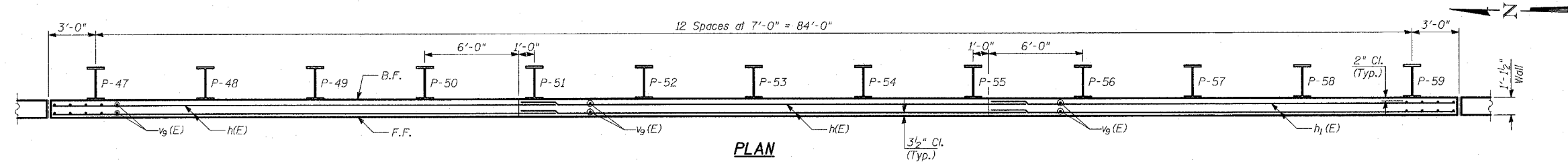


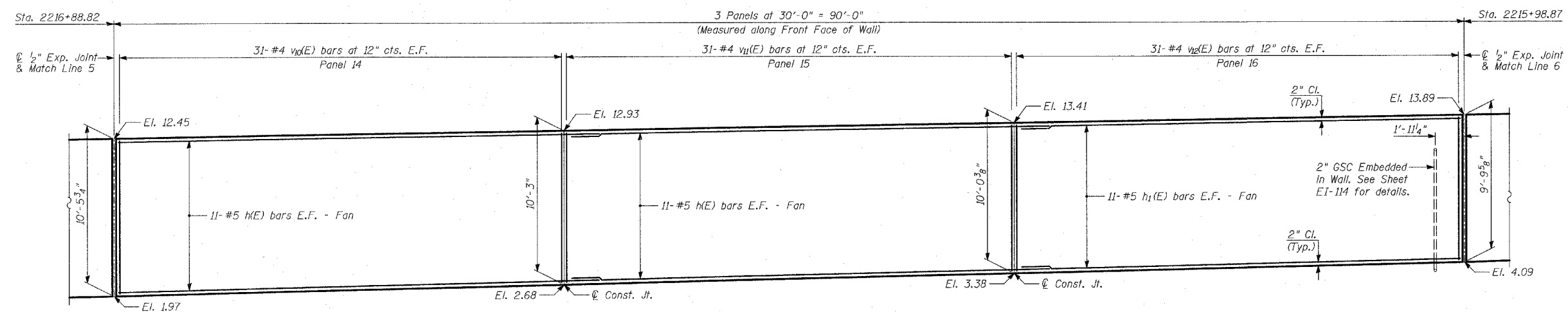
F.A.I. RTE.	SECTION	COUNTY	TOTAL SHEETS	SHEET NO.
94		COOK	860	435
STA. 2200+00.00 TO STA. 2362+00.00		ILLINOIS FED. AID PROJECT		
FED. ROAD DIST. NO.		1516.1, 1717 & 1818 R-8		
				62694



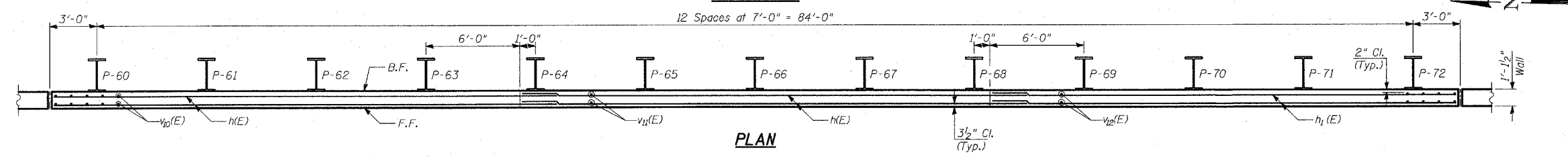
ELEVATION



PLAN



ELEVATION



PLAN

- NOTES:**
1. B.F. - denotes Back Face.
 2. E.F. - denotes Each Face.
 3. F.F. - denotes Front Face.
 4. Work this Sheet with Sheets 7 thru 10 of 18.
 5. Pile spacing measured along front face of wall.
 6. For Lap Splices, see Sheet 7 of 18.

TYLIN INTERNATIONAL

REVISIONS	
NAME	DATE

ILLINOIS DEPARTMENT OF TRANSPORTATION
F.A.I. 94 (DAN RYAN EXPRESSWAY)
RETAINING WALL ALONG STATE ST.
ENTRANCE RAMP FROM 95TH ST. TO 93RD ST.
WALL 2A - PLAN AND ELEVATION
STA. 2217+78.76 TO STA. 2215+98.87
 S.N. 016-W944 DESIGNED BY: MI, DJR
 SCALE: N.T.S. DRAWN BY: DJR, MAF
 DATE: MARCH 18, 2005 CHECKED BY: TD, MI