

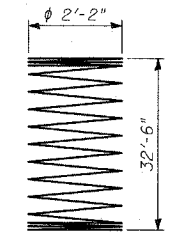
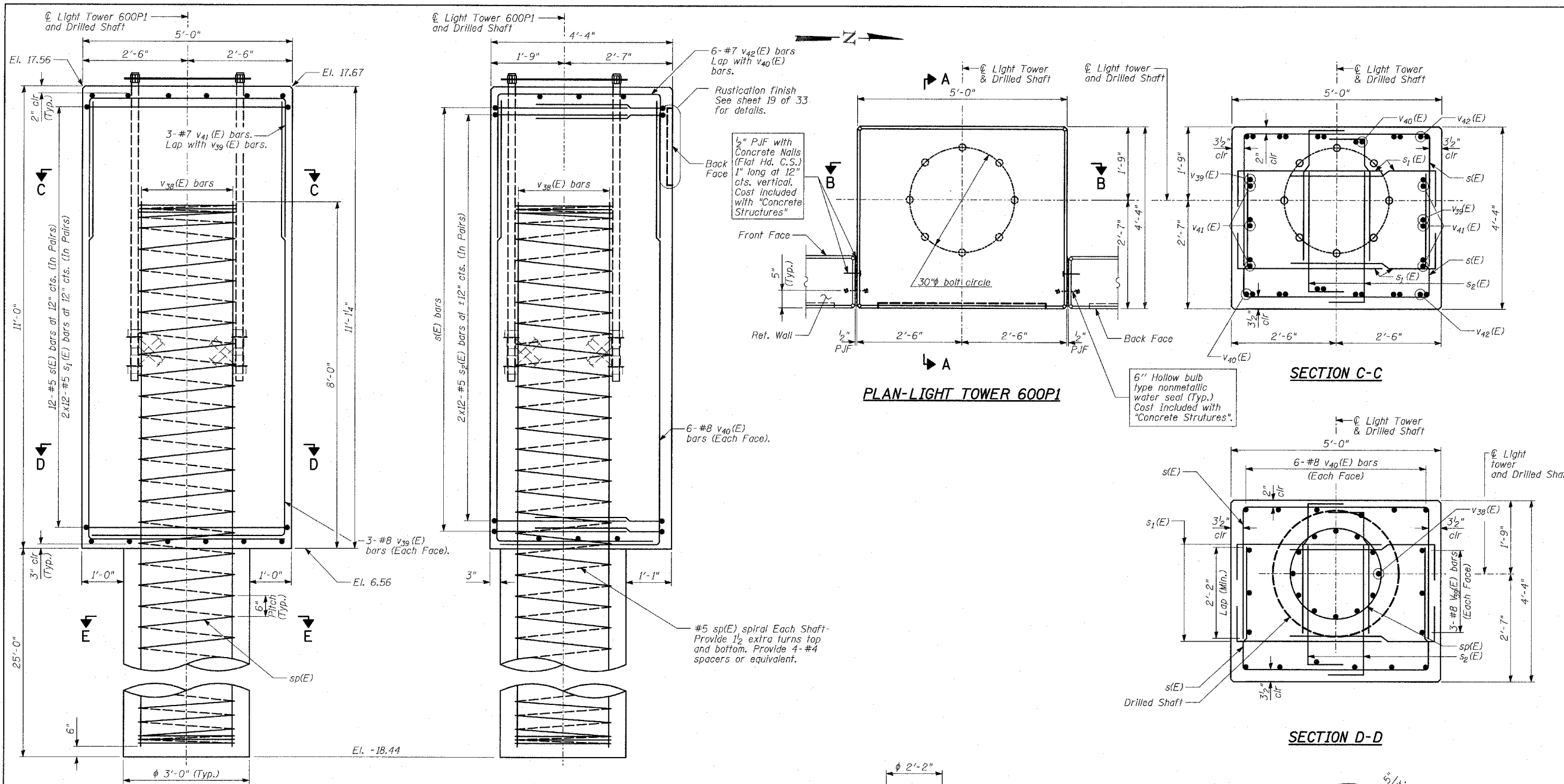
BILL OF MATERIAL

Bar	No.	Size	Length	Shape
s (E)	24	#5	10'-7"	┌
s ₁ (E)	48	#5	4'-2"	┌
s ₂ (E)	48	#5	3'-11"	┌
sp (E)	1	#5	32'-6"	
v ₃₈ (E)	12	#10	32'-6"	—
v ₃₉ (E)	6	#8	14'-10"	L
v ₄₀ (E)	12	#8	14'-3"	L
v ₄₁ (E)	3	#7	11'-2"	┌
v ₄₂ (E)	6	#7	10'-8"	┌
Reinforcement Bars, Epoxy Coated			POUND	3,730
Structure Excavation			CU YD	4
Concrete Structures			CU YD	9
Protective Coat			SQ YD	13
Rustication Finish			SQ FT	8
Drilled Shaft in Soil 36"			FOOT	25

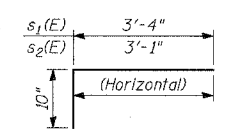
Reinforcement bars designated (E) shall be epoxy coated.

NOTES:

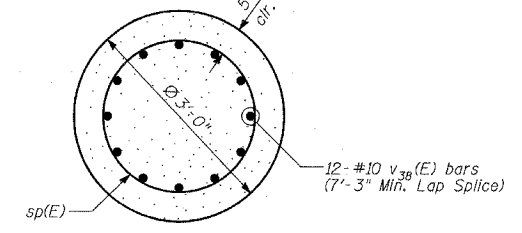
- The design loads are based on AASHTO Standard Specifications for Structural Supports for Highway Signs, Luminaires and Traffic Signals-2001.
- Drilled shafts shall be installed according to IDOT special provisions for "Drilled Shafts".
- Protective Coat shall be applied to exposed surfaces of the new concrete wall and tower base.
- At all locations where reinforcement bar laps are not in direct contact, the Contractor shall provide sufficient spacing between the vertical bars, equal to the size of the largest concrete aggregate plus 1/2 inch.
- For location of drilled shaft, see Sheet 3 of 33.
- Conduit is not shown for clarity. For location of conduit, see Sheet 16 of 33.
- Cost of anchor rod assembly, conduit and wires for grounding are included with "Concrete Structures".
- Minimum lap for spirals = 2'-6"



BAR sp(E)



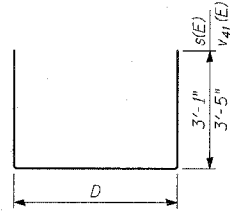
BARS s₁(E) & s₂(E)



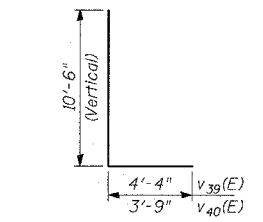
SECTION E-E

MARK TABLE

Bar	D
s (E)	4'-5"
v ₄₁ (E)	4'-4"
v ₄₂ (E)	3'-10"



BARS s(E), v₄₁(E) & v₄₂(E)



BARS v₃₉(E) & v₄₀(E)

REVISIONS	
NAME	DATE

ILLINOIS DEPARTMENT OF TRANSPORTATION
F.A.I. 94 (DAN RYAN EXPRESSWAY)
RETAINING WALL ALONG STATE ST.
93RD ST. TO 91ST ST.
WALL 2B - LIGHT TOWER 600P1
FOUNDATION DETAIL
 S.N. 016-W961 DESIGNED BY: MI, DJR
 SCALE: N.T.S. DRAWN BY: DJR, MAF
 DATE: MARCH 18, 2005 CHECKED BY: TD, MI