

Wang Engineering, INC.
 Consulting Geotechnical and Environmental Engineers
 wangeng3@wangeng.com
 1145 Main Street
 Lombard, IL 60148
 Telephone: 630 953-9928
 Fax: 630 953-9938

BORING LOG SB 05-11 Page 1 of 1

WEI Job No.: 414-07-01

Datum: CCD
 Elevation: 7.47 ft
 North: 1846450.08 ft
 East: 1177812.51 ft
 Station: 2250+81
 Offset: 119.0' RT

Client: T. Y. LIN International
 Project: Dan Ryan Improvements; IDOT No. D-91-421-01
 Location: From 95th Street to South of 69th Street

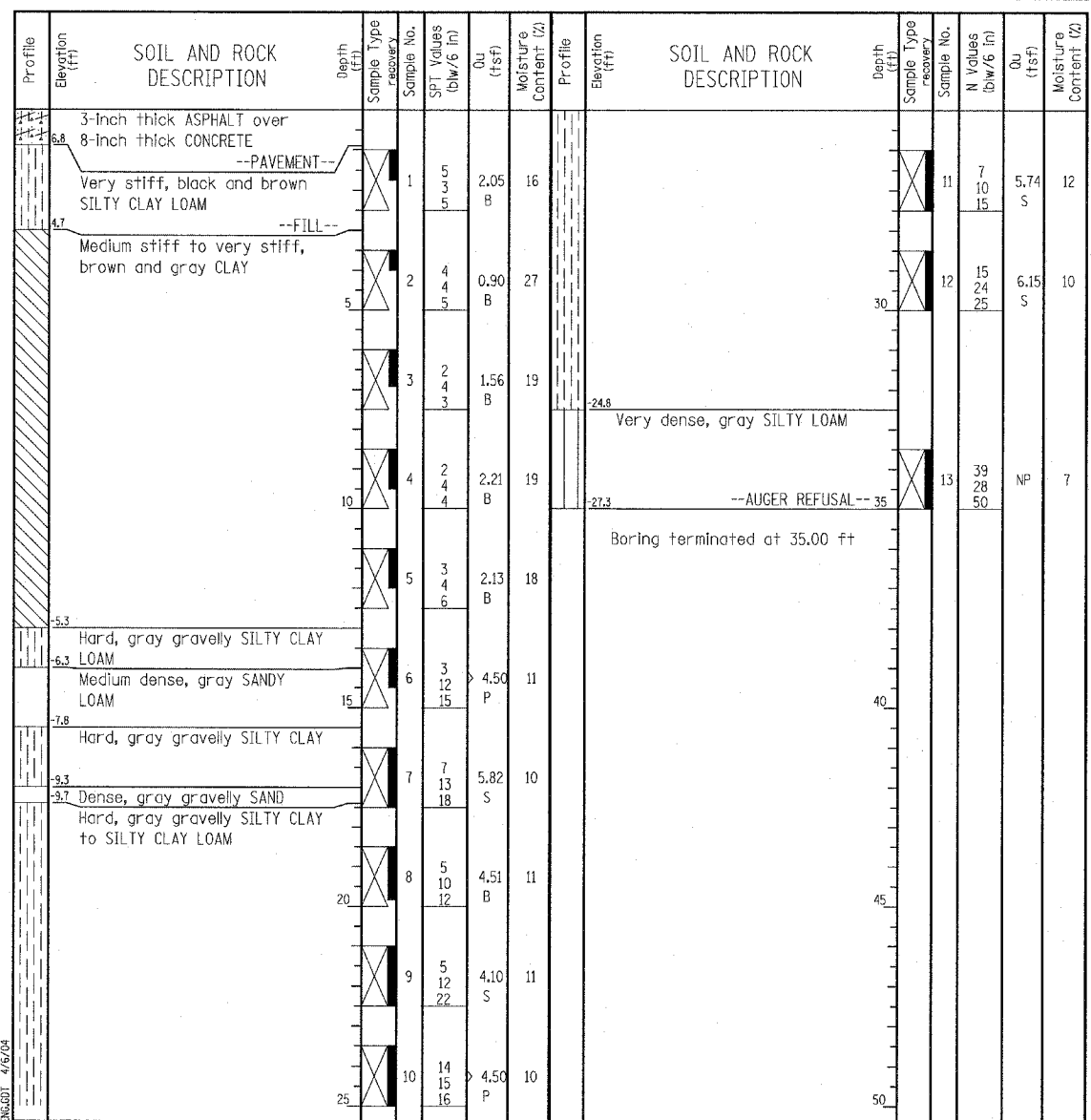
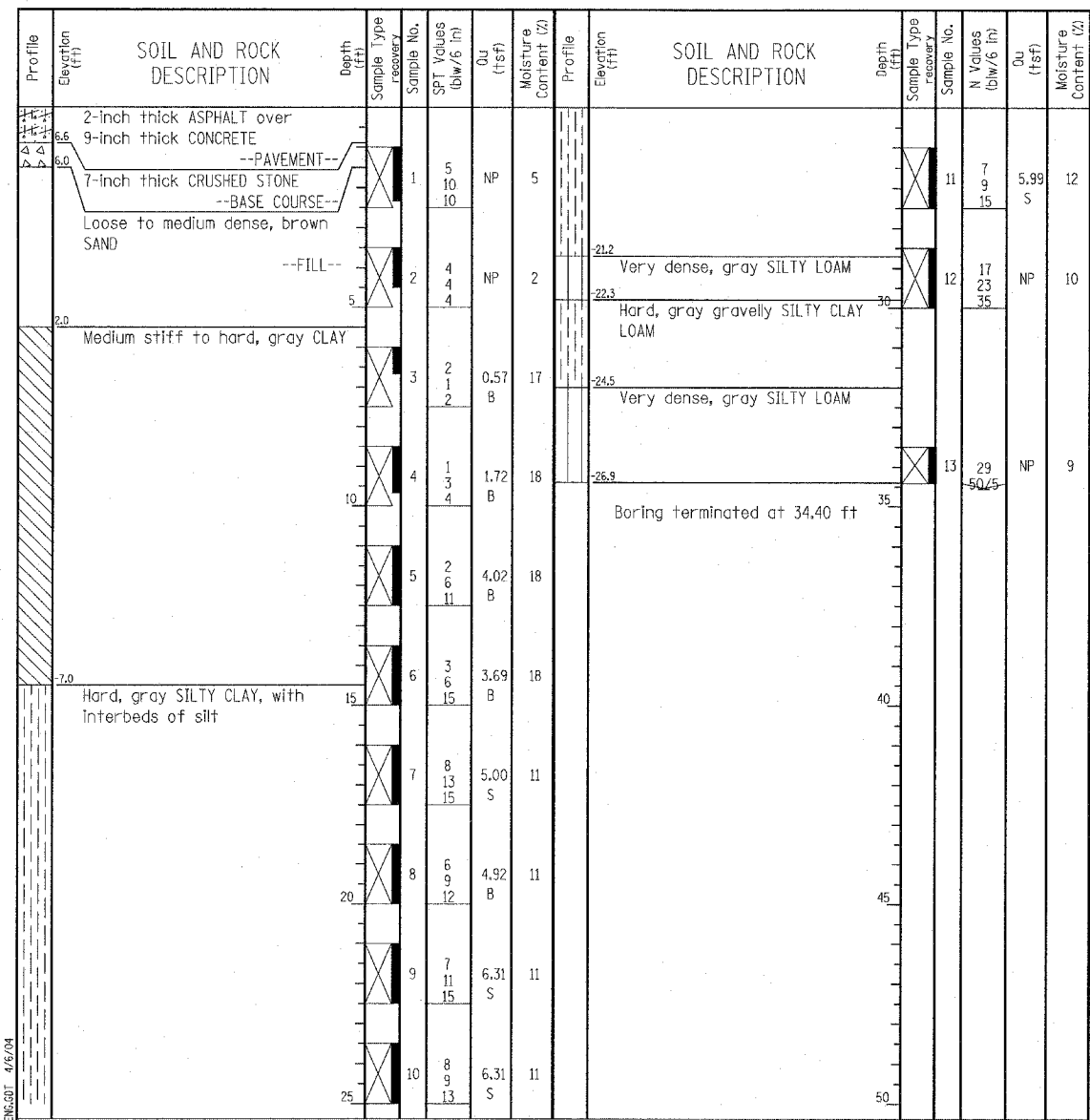
Wang Engineering, INC.
 Consulting Geotechnical and Environmental Engineers
 wangeng3@wangeng.com
 1145 Main Street
 Lombard, IL 60148
 Telephone: 630 953-9928
 Fax: 630 953-9938

BORING LOG SB 05-12 Page 1 of 1

WEI Job No.: 414-07-01

Datum: CCD
 Elevation: 7.66 ft
 North: 1846373.25 ft
 East: 1177823.14 ft
 Station: 2250+04
 Offset: 127.0' RT

Client: T. Y. LIN International
 Project: Dan Ryan Improvements; IDOT No. D-91-421-01
 Location: From 95th Street to South of 69th Street



GENERAL NOTES				WATER LEVEL DATA			
Begin Drilling	02-19-2004	Complete Drilling	02-19-2004	While Drilling	▽	DRY	
Drilling Contractor	Patrick Drilling	Drill Rig	CME 75 TMR	At Completion of Drilling	▽	DRY	
Driller	T&D	Logger	S. Janowski	Time After Drilling	NA		
Checked by	N. Davis	Drilling Method	3.25" ID HSA; Boring backfilled with bentonite upon completion	Depth to Water	▽	NA	
The stratification lines represent the approximate boundary between soil types; the actual transition may be gradual.							

GENERAL NOTES				WATER LEVEL DATA			
Begin Drilling	02-20-2004	Complete Drilling	02-20-2004	While Drilling	▽	DRY	
Drilling Contractor	Patrick Drilling	Drill Rig	CME 75 TMR	At Completion of Drilling	▽	DRY	
Driller	T&D	Logger	J. Kasnick	Time After Drilling	NA		
Checked by	N. Davis	Drilling Method	3.25" ID HSA; Boring backfilled with bentonite upon completion	Depth to Water	▽	NA	
The stratification lines represent the approximate boundary between soil types; the actual transition may be gradual.							

TYLIN INTERNATIONAL

REVISIONS	
NAME	DATE

ILLINOIS DEPARTMENT OF TRANSPORTATION
 F.A.I. 94 (DAN RYAN EXPRESSWAY)
 RETAINING WALL ALONG STATE ST.
 EXIT RAMP TO 87TH ST.
 WALL 5
 BORING LOGS SB05-11 & SB05-12
 S.N. 016-W955 DESIGNED BY: DJR
 SCALE: N.T.S. DRAWN BY: DJR
 DATE: MARCH 18, 2005 CHECKED BY: TD