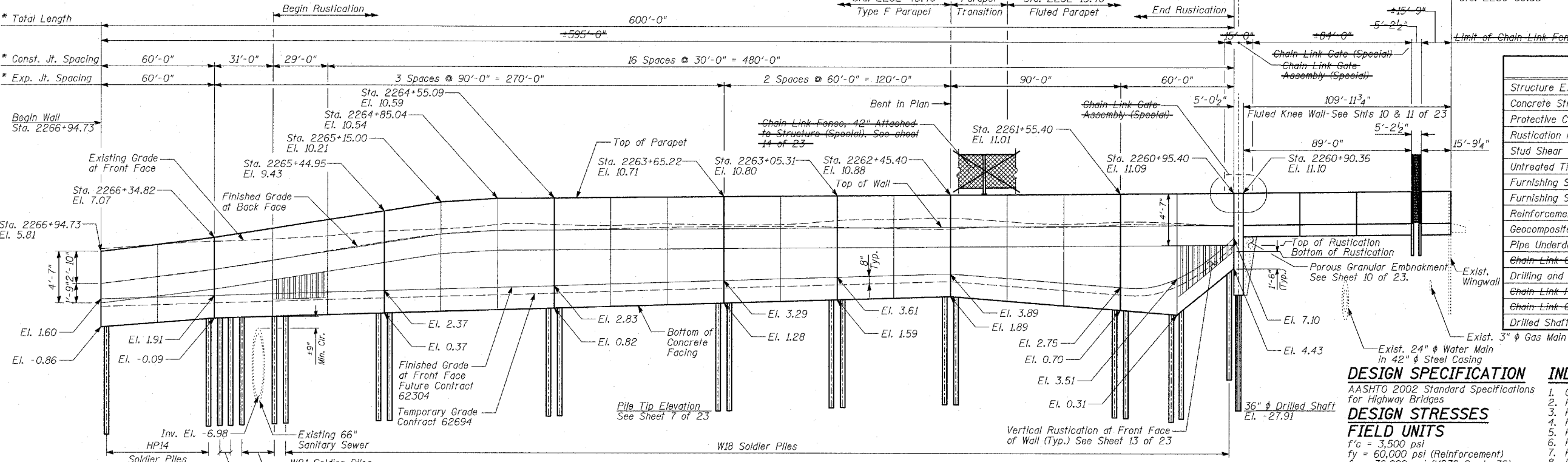


Benchmarks: BM 3553 Set "\*" northwest bolt of traffic signal/light base at northeast intersection of 87th St. and State St. El. 8.47  
 Existing Structure: None.

F.A.I. RTE.	SECTION	COUNTY	TOTAL SHEETS	SHEET NO.
94		COOK	860	540
STA. 2200+00.00 TO STA. 2362+00.00				
FED. ROAD DIST. NO. ILLINOIS		FED. AID PROJECT		
(1516.1, 1717 & 1818) R-8		62694		



**TOTAL BILL OF MATERIAL**

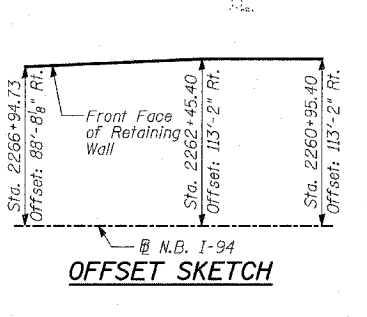
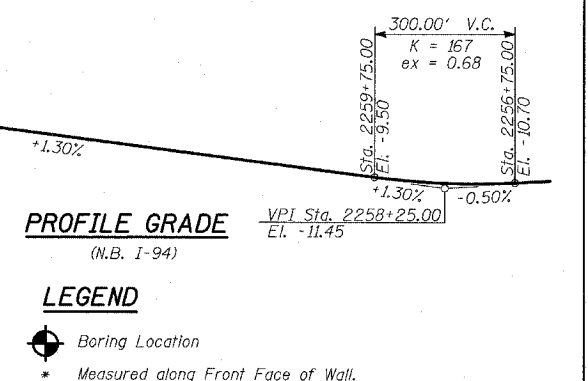
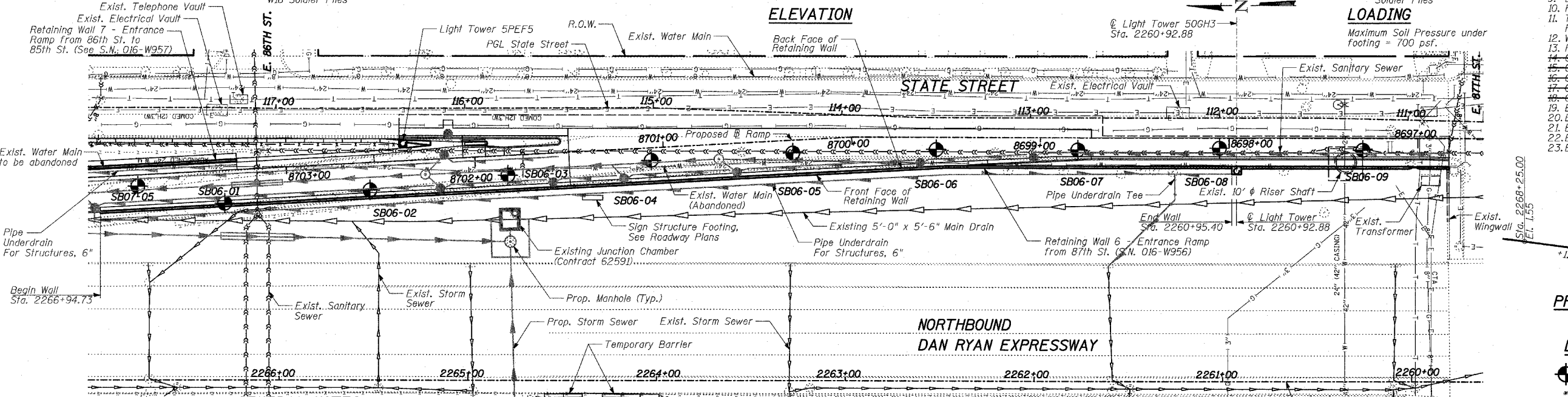
ITEM	UNIT	TOTAL
Structure Excavation	CU YD	535
Concrete Structures	CU YD	270
Protective Coat	SQ YD	892
Rustication Finish	SQ FT	2,101
Stud Shear Connectors	EACH	682
Untreated Timber Lagging	SQ FT	2,928
Furnishing Soldier Piles (HP Section)	FOOT	199
Furnishing Soldier Piles (W Section)	FOOT	2,264
Reinforcement Bars, Epoxy Coated	POUND	39,090
Geocomposite Wall Drain	SQ YD	359
Pipe Underdrains for Structures, 6"	FOOT	600
Chain Link Gates (Special)	EACH	1
Drilling and Setting Soldier Piles (in Soil)	CU FT	12,953
Chain Link Fence, 42" Attached to Structure (Special)	FOOT	695
Chain Link Gate Assembly (Special)	EACH	1
Drilled Shaft in Soil 36"	FOOT	30

**DESIGN SPECIFICATION**  
 AASHTO 2002 Standard Specifications for Highway Bridges

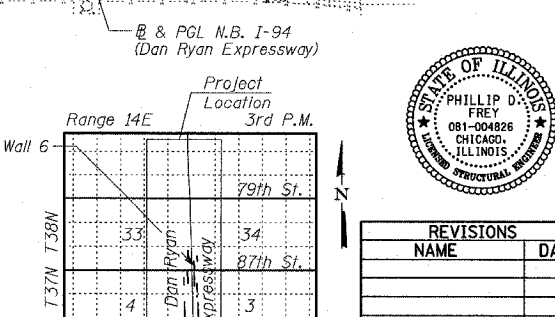
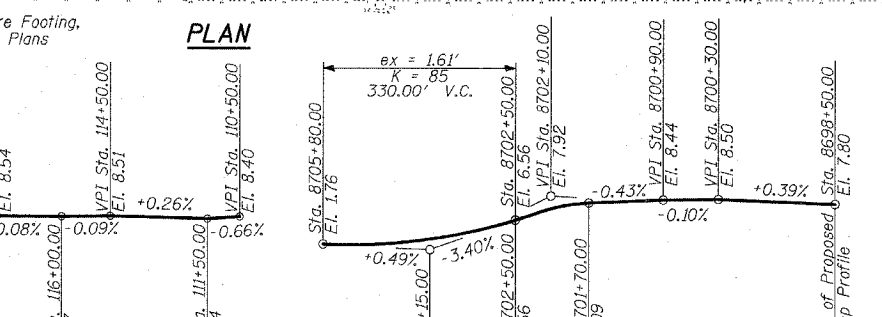
**DESIGN STRESSES**  
**FIELD UNITS**  
 $f'_c = 3,500$  psi  
 $f_y = 60,000$  psi (Reinforcement)  
 $f_y = 36,000$  psi (M270 Grade 36) Soldier Piles

**LOADING**  
 Maximum Soil Pressure under footing = 700 psf.

- INDEX OF SHEETS**
- GENERAL PLAN
  - PLAN AND ELEVATION STA. 2266+94.73 TO STA. 2265+44.95
  - PLAN AND ELEVATION STA. 2265+44.95 TO STA. 2263+65.22
  - PLAN AND ELEVATION STA. 2263+65.22 TO STA. 2262+45.40
  - PLAN AND ELEVATION STA. 2262+45.40 TO STA. 2260+95.40
  - PARAPET TRANSITION
  - PILE LAYOUT, DETAILS & BILL OF MATERIAL
  - LIGHT TOWER 50GH3 FOUNDATION DETAILS
  - LIGHT TOWER DETAILS
  - PLAN AND ELEVATION - FLUTED KNEE WALL
  - TYPICAL SECTIONS, ELEVATIONS AND DETAILS - FLUTED KNEE WALL
  - WALL CROSS SECTIONS & DETAILS
  - RUSTICATION DETAILS
  - CHAIN LINK FENCE, 42" ATTACHED TO STRUCTURE (SPECIAL)
  - GATE PLAN AND NOTES
  - GATE ELEVATIONS
  - GATE SECTIONS
  - GATE SECTIONS AND DETAILS
  - BORING LOGS SB06-01 & SB06-02
  - BORING LOGS SB06-03 & SB06-04
  - BORING LOGS SB06-05 & SB06-06
  - BORING LOGS SB06-07 & SB06-08
  - BORING LOG SB06-09



- GENERAL NOTES:**
- Reinforcement bars shall conform to the requirements of AASHTO M31 or M322 Grade 60.
  - The Contractor is responsible for the design and performance of the lagging using no less than 3" nominal rough-sawn thickness and the minimum tabulated unit stress in bending ( $f_b$ ), used in the design of timber lagging shall be 1000 psi.
  - The soldier piles shall be cleaned and given one shop coat of Inorganic Zinc-Rich primer.
  - All exposed concrete edges shall be chamfered  $\frac{3}{4}$ " except as noted.
  - Protective coat shall be applied to exposed surfaces of the concrete facing.
  - Existing utilities in conflict with soldier pile wall construction shall be abandoned or relocated according to directions given on the roadway plans.
  - All construction joints shall be bonded.
  - All elevations shown are based on the Chicago City Datum of 0.00, which is 579.19 feet above mean tide New York, (NAVD 88)
  - The wall shall be backfilled (where applicable) prior to placing the concrete facing.
  - The Contractor is responsible to coordinate all electrical crossings with this Contract and with Contract 62583.



**TYLIN INTERNATIONAL**

**REVISIONS**

NAME	DATE

**ILLINOIS DEPARTMENT OF TRANSPORTATION**  
 F.A.I. 94 (DAN RYAN EXPRESSWAY)  
 RETAINING WALL ALONG STATE ST.  
 ENTRANCE RAMP FROM 87TH ST.  
 WALL 6 - GENERAL PLAN  
 STA. 2266+94.73 TO STA. 2260+95.40  
 S.N. 016-W956  
 SCALE: N.T.S.  
 DATE: MARCH 18, 2005

DESIGNED BY: MI, MAF  
 DRAWN BY: MAF, DJR  
 CHECKED BY: TD, MI

Signed: *Phillip D. Frey*  
 PHILLIP D. FREY, S.E.  
 CHICAGO, ILLINOIS  
 Expires 11-30-2006  
 Date: 3/18/05

For drawings 1 thru 23 of 23

SHEET 1 OF 23