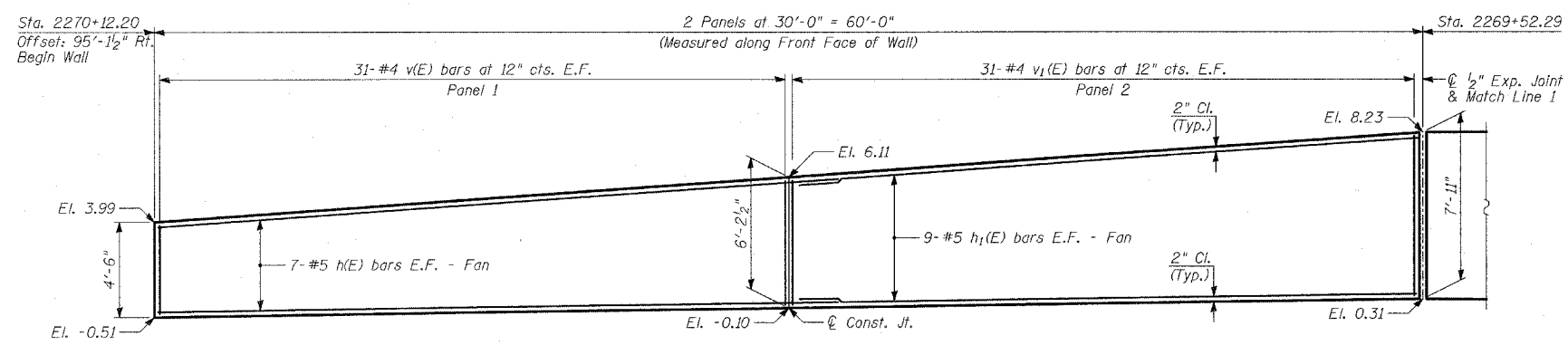
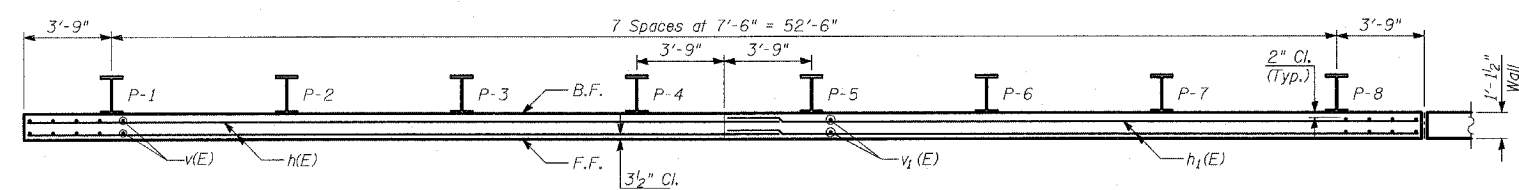


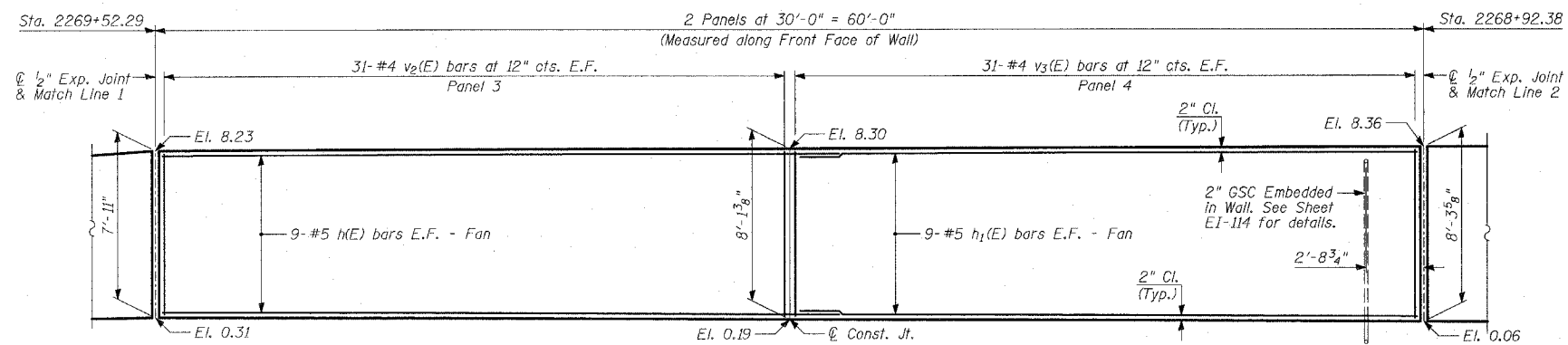
| | | | | |
|---------------------------|----------|--------------------|--------------|-----------|
| F.A.I. RTE. | SECTION | COUNTY | TOTAL SHEETS | SHEET NO. |
| 94 | | COOK | 860 | 564 |
| STA. 2200+00.00 | | TO STA. 2362+00.00 | | |
| FED. ROAD DIST. NO. | ILLINOIS | FED. AID PROJECT | | |
| (1516.1, 1717 & 1818) R-8 | | | | 62694 |



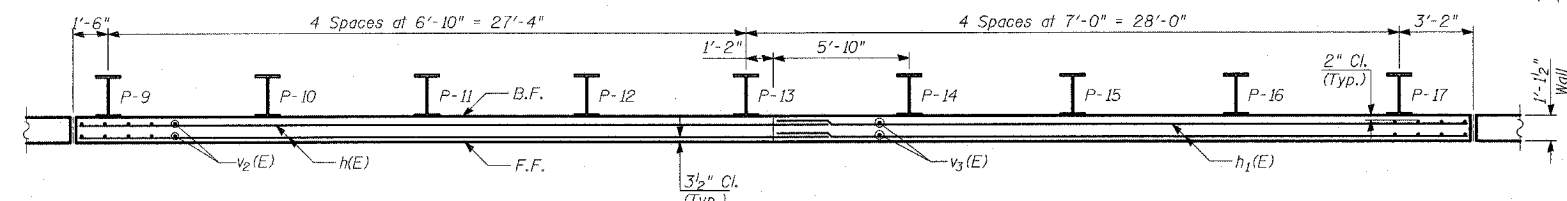
ELEVATION



PLAN



ELEVATION



PLAN

- NOTES:**
1. B.F. - denotes Back Face.
 2. E.F. - denotes Each Face.
 3. F.F. - denotes Front Face.
 4. Work this Sheet with Sheets 5 thru 8 of 11.
 5. Pile spacing measured along front face of wall.
 6. For Lap Splices, see Sheet 5 of 11.

SHEET 2 OF 11

TYLIN INTERNATIONAL

| REVISIONS | |
|-----------|------|
| NAME | DATE |
| | |
| | |
| | |
| | |
| | |
| | |
| | |
| | |
| | |

ILLINOIS DEPARTMENT OF TRANSPORTATION
F.A.I. 94 (DAN RYAN EXPRESSWAY)
RETAINING WALL ALONG STATE ST.
ENTRANCE RAMP FROM 86TH ST. TO 85TH ST.
WALL 7 - PLAN AND ELEVATION
STA. 2270+12.20 TO STA. 2268+92.38
 S.N. 016-W957 DESIGNED BY: MI, TB
 SCALE: N.T.S. DRAWN BY: TB, DJR
 DATE: MARCH 18, 2005 CHECKED BY: TD, MI