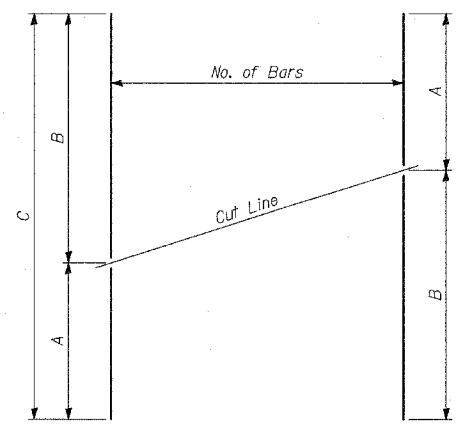


PILE LAYOUT

Pile	Station at Working Point	Top of Wall El.	Top of Pile El.	Bot. of Wall El.	Section	Pile Tip El.	Pile Length
P-1	2270+08.51	4.25	2.25	-0.46	W18x143	-28.50	30'-9"
P-2	2270+01.03	4.78	2.78	-0.36		-28.38	31'-2"
P-3	2269+93.54	5.31	3.31	-0.25		-28.27	31'-7"
P-4	2269+86.05	5.84	3.84	-0.15		-28.16	32'-0"
P-5	2269+78.56	6.37	4.37	-0.05		-28.13	32'-6"
P-6	2269+71.07	6.90	4.90	0.06		-28.01	32'-11"
P-7	2269+63.58	7.43	5.43	0.16		-27.90	33'-4"
P-8	2269+56.09	7.96	5.96	0.26	W18x143	-27.79	33'-9"
P-9	2269+50.85	8.23	6.23	0.31	W21x147	-28.77	35'-0"
P-10	2269+44.03	8.25	6.25	0.28		-28.75	35'-0"
P-11	2269+37.20	8.26	6.26	0.25		-28.82	35'-1"
P-12	2269+30.38	8.28	6.28	0.22		-28.81	35'-1"
P-13	2269+23.56	8.29	6.29	0.19		-28.87	35'-2"
P-14	2269+16.57	8.31	6.31	0.16		-28.86	35'-2"
P-15	2269+09.58	8.32	6.32	0.13		-28.93	35'-3"
P-16	2269+02.59	8.34	6.34	0.10		-28.91	35'-3"
P-17	2268+95.60	8.36	6.36	0.07		-28.98	35'-4"
P-18	2268+89.44	8.37	6.37	0.05		-28.96	35'-4"
P-19	2268+82.45	8.39	6.39	0.02		-29.03	35'-5"
P-20	2268+75.46	8.40	6.40	-0.01		-29.02	35'-5"
P-21	2268+68.47	8.42	6.42	-0.04		-29.08	35'-6"
P-22	2268+61.48	8.43	6.43	-0.07		-29.15	35'-7"
P-23	2268+54.49	8.45	6.45	-0.10		-29.13	35'-7"
P-24	2268+47.50	8.46	6.46	-0.13		-29.20	35'-8"
P-25	2268+40.51	8.48	6.48	-0.16		-29.19	35'-8"
P-26	2268+33.52	8.50	6.50	-0.19		-29.25	35'-9"
P-27	2268+26.53	8.51	6.51	-0.22		-29.24	35'-9"
P-28	2268+19.54	8.53	6.53	-0.25		-29.31	35'-10"
P-29	2268+12.55	8.54	6.54	-0.27		-29.29	35'-10"
P-30	2268+05.57	8.56	6.56	-0.30		-29.36	35'-11"
P-31	2267+99.58	8.57	6.57	-0.28		-29.34	35'-11"
P-32	2267+92.59	8.59	6.59	-0.20		-29.24	35'-10"
P-33	2267+85.60	8.60	6.60	-0.12		-29.15	35'-9"
P-34	2267+78.61	8.62	6.62	-0.04		-29.05	35'-8"
P-35	2267+71.62	8.64	6.64	0.04		-29.03	35'-8"
P-36	2267+64.63	8.65	6.65	0.11		-28.93	35'-7"
P-37	2267+57.64	8.67	6.67	0.19		-28.83	35'-6"
P-38	2267+50.65	8.68	6.68	0.27		-28.73	35'-5"
P-39	2267+43.66	8.70	6.70	0.35		-28.72	35'-5"
P-40	2267+36.67	8.71	6.71	0.43		-28.62	35'-4"
P-41	2267+29.68	8.73	6.73	0.51		-28.52	35'-3"
P-42	2267+22.69	8.75	6.75	0.59		-28.42	35'-2"
P-43	2267+15.70	8.76	6.76	0.67		-28.40	35'-2"
P-44	2267+08.96	8.78	6.78	0.82		-27.22	34'-0"
P-45	2267+01.47	8.80	6.80	0.95		-27.12	33'-11"
P-46	2266+93.98	8.82	6.82	1.08		-26.93	33'-9"
P-47	2266+86.49	8.84	6.84	1.21		-26.83	33'-8"
P-48	2266+79.00	8.85	6.85	1.34		-26.73	33'-7"
P-49	2266+71.51	8.87	6.87	1.47		-26.55	33'-5"
P-50	2266+64.02	8.89	6.89	1.60		-26.45	33'-4"
P-51	2266+56.53	8.90	6.90	1.73		-26.35	33'-3"
P-52	2266+49.04	8.92	6.92	1.86		-26.16	33'-1"
P-53	2266+41.55	8.94	6.94	1.99		-26.06	33'-0"
P-54	2266+34.07	8.95	6.95	2.12		-25.96	32'-11"
P-55	2266+26.58	8.97	6.97	2.25	W21x147	-25.78	32'-9"



SERIES OF BAR CUTTING DIAGRAM

See table for dimensions.
Make all cuts normal to bar axis

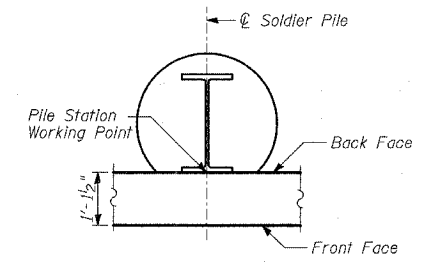
BAR TABLE SCHEDULE

Bar	No. of Sets Req'd	No. of Bars Per Set	A	B	C
v(E)	1	31	4'-2"	5'-11"	10'-1"
v ₁ (E)	1	31	5'-11"	7'-7"	13'-6"
v ₂ (E)	1	31	7'-7"	7'-10"	15'-5"
v ₃ (E)	1	31	8'-2"	8'-5"	16'-7"
v ₄ (E)	1	31	8'-7"	8'-4"	16'-11"
v ₅ (E)	1	31	8'-4"	8'-0"	16'-4"
v ₆ (E)	1	31	8'-0"	7'-9"	15'-9"
v ₇ (E)	1	31	7'-9"	7'-4"	15'-1"
v ₈ (E)	1	31	7'-4"	6'-10"	14'-2"
v ₉ (E)	1	31	6'-10"	6'-5"	13'-3"

BILL OF MATERIAL

Bar	No.	Size	Length	Shape	
v(E)	146	#5	32'-2"	—	
v ₁ (E)	90	#5	29'-8"	—	
v ₂ (E)	31	#4	10'-1"	—	
v ₃ (E)	31	#4	13'-6"	—	
v ₄ (E)	31	#4	15'-5"	—	
v ₅ (E)	62	#4	7'-10"	—	
v ₆ (E)	62	#4	8'-0"	—	
v ₇ (E)	31	#4	16'-7"	—	
v ₈ (E)	31	#4	16'-11"	—	
v ₉ (E)	31	#4	16'-4"	—	
v ₁₀ (E)	31	#4	15'-9"	—	
v ₁₁ (E)	31	#4	15'-1"	—	
v ₁₂ (E)	31	#4	14'-2"	—	
v ₁₃ (E)	31	#4	13'-3"	—	
Reinforcement Bars, Epoxy Coated				POUND	11,740
Concrete Structures				CU YD	128
Protective Coat				SQ YD	324
Furnishing Soldier Piles (W Section)				FOOT	1,900
Drilling and Setting Soldier Piles (in Soil)				CU FT	9,414

Reinforcement bars designated (E) shall be epoxy coated.



SOLDIER PILE WORKING POINT

LAP SPLICES

Bar	Lap
#4	1'-8"
#5	2'-2"
#6	2'-7"
#8	4'-6"

REVISIONS	
NAME	DATE

ILLINOIS DEPARTMENT OF TRANSPORTATION
F.A.I. 94 (DAN RYAN EXPRESSWAY)
RETAINING WALL ALONG STATE ST.
ENTRANCE RAMP FROM 86TH ST. TO 85TH ST.
WALL 7
PILE LAYOUT, DETAILS & BILL OF MATERIAL
 S.N. 016-W957 DESIGNED BY: DJR, TB
 SCALE: N.T.S. DRAWN BY: TB, DJR
 DATE: MARCH 18, 2005 CHECKED BY: TD, MI