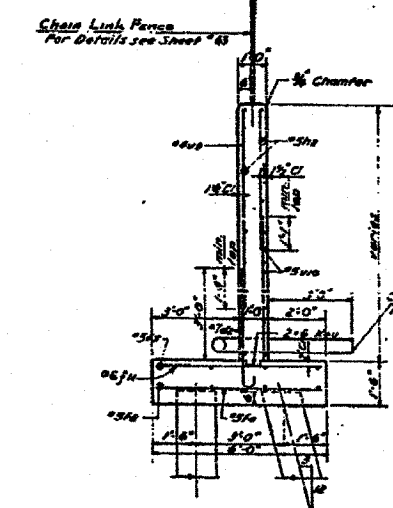


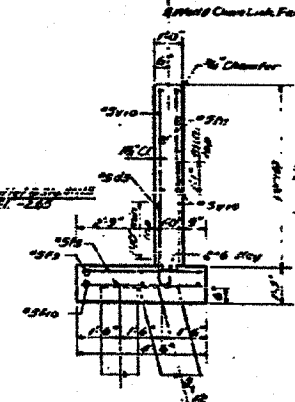
**BILL OF MATERIAL**

MARK	NO.	SIZE	LENGTH	TYPE	A	B	C	D	PANELS
41	4	3	3-5		7	2-10			A, B
42	240	7	4-10		1	10	4-0		C, D, E, F, G, H, K
43	4	3	3-10		5-10	2-5	7-0	2-5	B
44	3	3	3-4		5-10	3-0	1-0	3-0	D
45	30	3	4-4		7	3-9			L, M
46	3	3	6-0		5-10	2-10	10	2-10	N
47	4	3	30-9						A, D
48	6	3	37-6						A, K
49	256	5	4-0						A, D, L, M
50	245	5	3-6						C, D, E, F, G, H, K
51	16	3	31-5						C, D, L, K
52	16	3	31-1						C, D, L, K
53	16	3	31-7						E, F, G, H
54	16	3	31-2						E, F, G, H
55	6	3	29-4						L, M
56	6	3	29-2						L, M
57	163	3	5-6						C, A, E, F, G, H, K
58	71	3	31-6						A, C, E, G, J, L
59	81	3	29-9						D, C, E, H, K
60	10	3	24-9						M
61	42	3	5-3						A, B
62	16	3	5-10						A
63	16	3	5-9						B
64	90	4	5-7						C, D, N
65	128	2	4-2						C, D, H, K
66	30	4	5-2						D
67	30	4	3-1						E
68	32	5	5-5						F
69	30	4	1-4						F
70	23	5	5-0						F, G
71	60	4	4-3						G, J
72	60	5	4-0						G, J
73	30	4	3-6						K
74	32	3	3-8						L
75	37	3	3-1						M
76	28	3	3-1						M

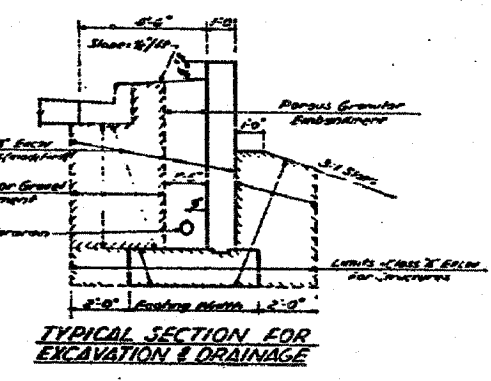
CLASS "C" Concrete 198.0 Cu. Yds.  
 Reinforcement Bars 16581 LBS.  
 CLASS "A" Excavation for Structures 370 Cu. Yds.  
 CLASS "A" Excavation for Structures (Material) 251 Cu. Yds.  
 Sand or Gravel Embankment 366 Tons  
 Porous Granular Embankment 124 Cu. Yds.  
 Enclosure for Corroded Metal Pipes 150 Lbs.  
 Chain Link Fence - 40' Ht. 100 Lbs.  
 Chain Link Fence - 60' Ht. 101 Lbs.



SECTION A-A  
Scale: 1/2" = 1'-0"



SECTION B-B (shown)  
Scale: 1/2" = 1'-0"  
SECTION D-D SIMILAR



TYPICAL SECTION FOR EXCAVATION & DRAINAGE

NOTES -  
 For location of wall see Sheet # 48  
 For pile quantities & details see Sheet # 48  
 Batter Piles (2 in 12)  
 For location of Section D-D see Sheet No. 48  
 For Concrete & Reinf. @ Light Posts, See Set No. 95

**REVISIONS**

DATE	BY	DESCRIPTION
11-19-04	J.E.C.	ADD LIGHT POSTS
11-19-04	J.E.C.	REVISIONS TO LIGHT POSTS

**DEPARTMENT OF HIGHWAYS**  
 COOK COUNTY, ILLINOIS

DANIEL RYAN  
 WILLIAM J. BORTNER

**RETAINING WALL ALONG WEST EDGE OF RAMP 'L'  
 SOUTH ROUTE EXPRESSWAY**

PROJECT: E-04-B(38)  
 DRAWN: J.E.C.  
 CHECKED: J.E.C.  
 APPROVED: M.P. [Signature]

DATE: 4/08/05  
 SHEET: 45 OF 98  
 DRAWING NO: SR-1833

**REVISIONS**

NAME	DATE

ILLINOIS DEPARTMENT OF TRANSPORTATION  
 F.A.I. 94 (DAN RYAN EXPRESSWAY)  
 RETAINING WALL ALONG STATE ST.  
 ENTRANCE RAMP AT 79TH ST.  
 EXISTING RETAINING WALL  
 (2 OF 2)

S.N. 016-W975  
 SCALE: N.T.S.  
 DATE: MARCH 18, 2005

DESIGNED BY: DJR  
 DRAWN BY: DJR  
 CHECKED BY: TD

Do not work from this sheet.  
 The information shown is for  
 reference purposes only.  
 No Pay Items are shown.

03/25/2005 11:16:06 AM