

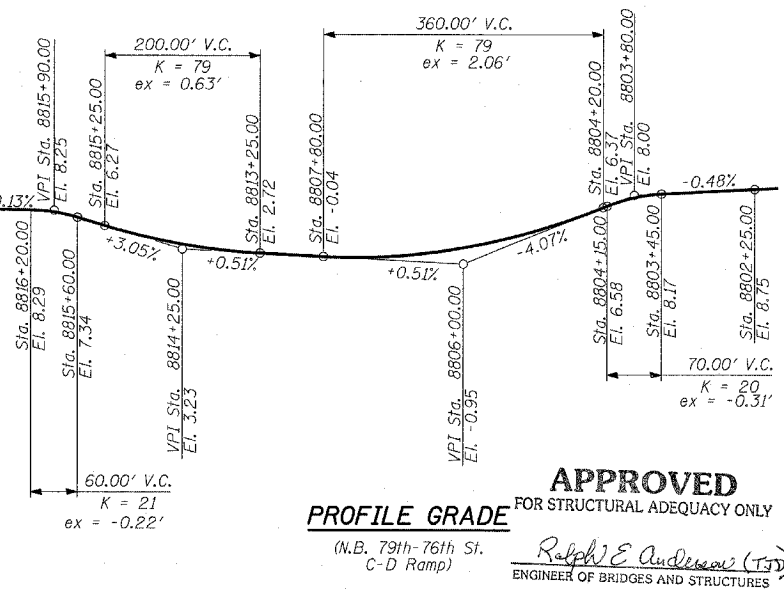
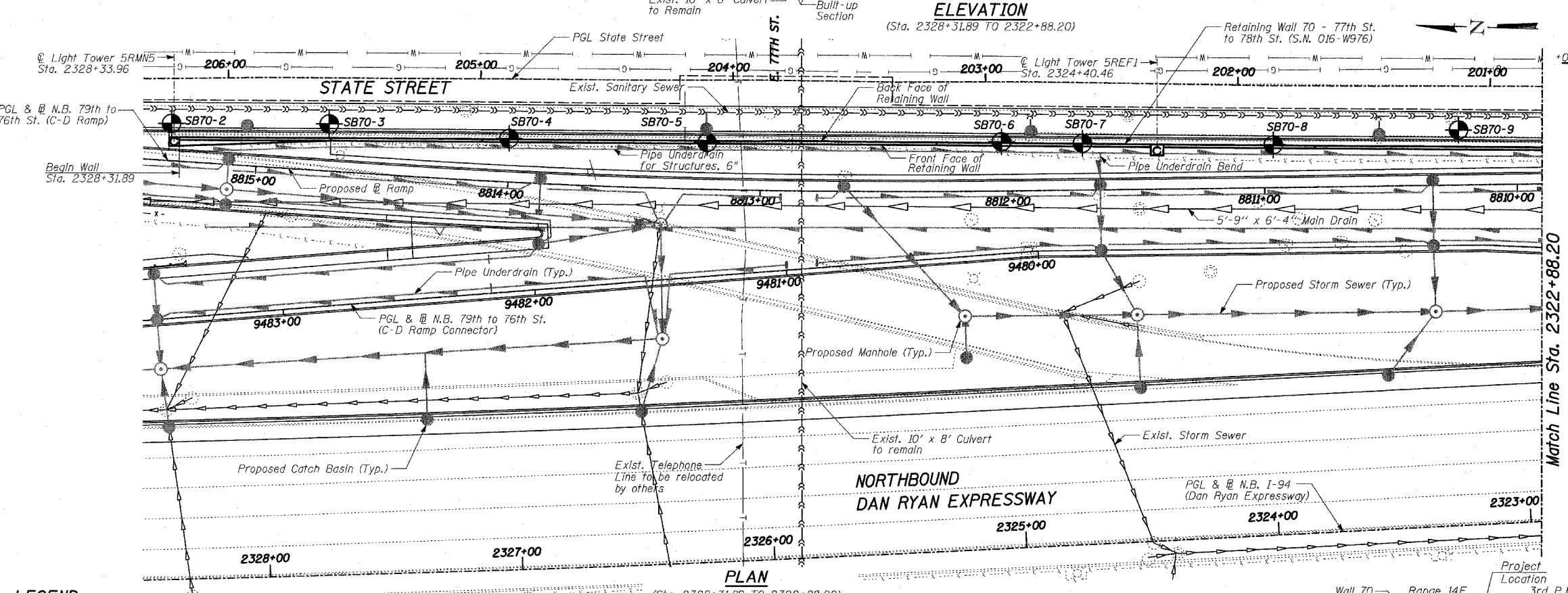
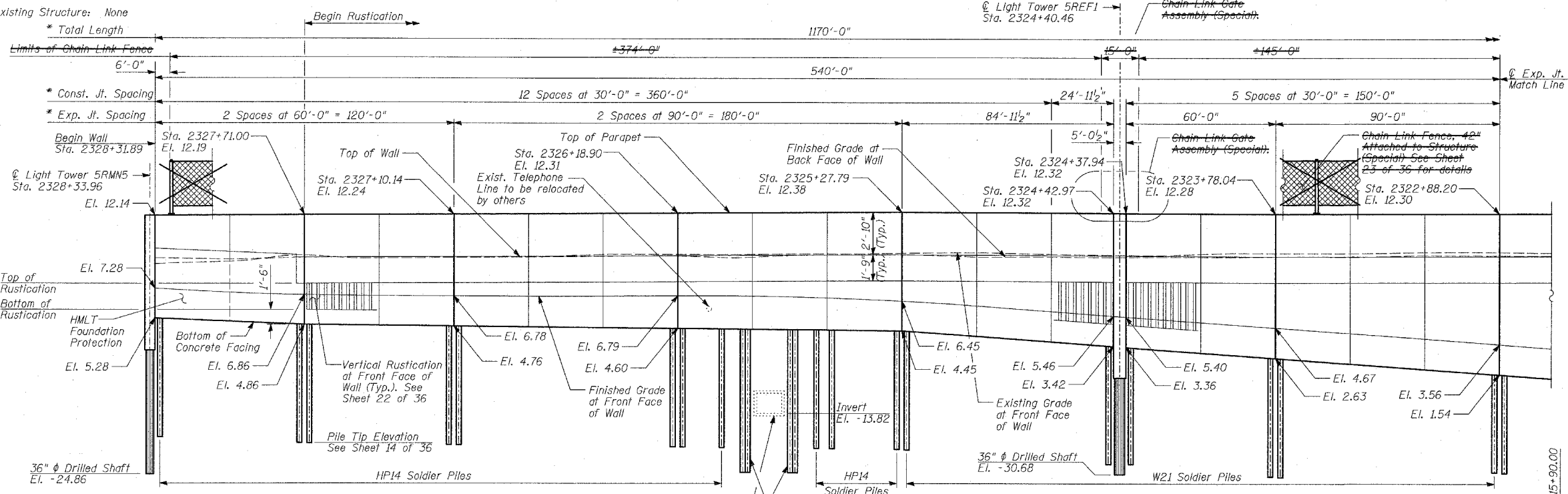
Benchmarks: BM 2251 Found cross on east bolt of fire hydrant on the east side of State St. Approximately 135 feet north of 79th St. El.=0.95 Feet

Existing Structure: None

F.A.I. RTE.	SECTION	COUNTY	TOTAL SHEETS	SHEET NO.
94		COOK	860	605
STA. 2200+00.00 TO STA. 2362+00.00				
FED. ROAD DIST. NO. ILLINOIS FED. AID PROJECT				
(1516.1, 1717 & 1818) R-8 62694				

**TOTAL BILL OF MATERIAL**

ITEM	UNIT	TOTAL
Structure Excavation	CU YD	1,071
Concrete Structures	CU YD	571
Protective Coat	SQ YD	1,632
Rustication Finish	SQ FT	5,561
Furnishing and Erecting Structural Steel	POUND	1,800
Stud Shear Connectors	EACH	1,448
Untreated Timber Lagging	SQ FT	6,452
Furnishing Soldier Piles (HP Section)	FOOT	1,398
Furnishing Soldier Piles (Built-up Section)	FOOT	69
Furnishing Soldier Piles (W Section)	FOOT	3,824
Reinforcement Bars, Epoxy Coated	POUND	80,330
Geocomposite Wall Drain	SQ YD	789
Pipe Underdrains for Structures, 6"	FOOT	1,170
Drilling and Setting Soldier Piles (in Soil)	CU FT	30,056
Chain Link Fence, 42" Attached to Structure (Special)	FOOT	1,134
Chain Link Gate Assembly (Special)	EACH	2
Drilled Shaft in Soil 36"	FOOT	92



**APPROVED** FOR STRUCTURAL ADEQUACY ONLY  
 PROFILE GRADE  
 (N.B. 79th-76th St. C-D Ramp)  
 Ralph E. Anderson (Tyr)  
 ENGINEER OF BRIDGES AND STRUCTURES

**DESIGN SPECIFICATION**  
 AASHTO 2002 Standard Specifications for Highway Bridges

**DESIGN STRESSES**  
 FIELD UNITS  
 $f'_c = 3,500$  psi  
 $f_y = 60,000$  psi (Reinforcement)  
 $f_y = 36,000$  psi (M270 Grade 36) Soldier Piles

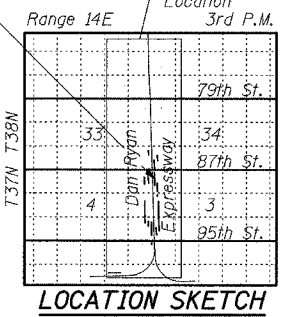
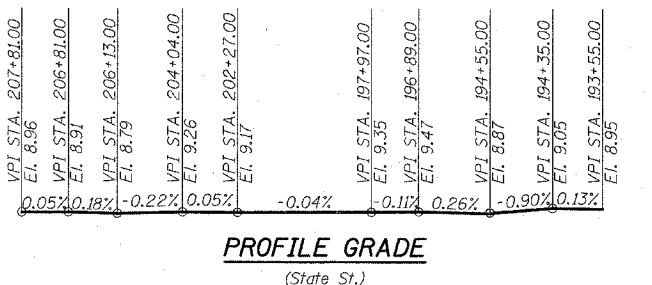
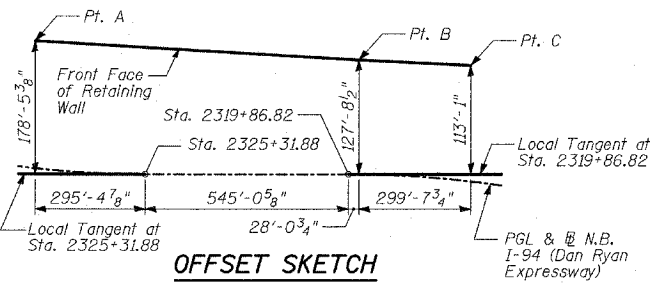
**NOTE:**  
 1. For General Notes and Index of Sheets, see Sheet 3 of 36.

**LEGEND**

- Boring Location
- Measured along Front Face of Wall.

**OFFSET SKETCH**

Point	Station	Offset to N.B. I-94
A	2328+31.89	174'-7" Rt.
B	2319+59.07	127'-8 7/8" Rt.
C	2316+62.40	117'-8 5/8" Rt.



Signed: Phillip D. Frey, S.E. II, Lic. No. 081-04826, Expires 11-30-2006.  
 Date: 3/18/05  
 For drawings 1 thru 36 of 36

**REVISIONS**

NAME	DATE

ILLINOIS DEPARTMENT OF TRANSPORTATION  
 F.A.I. 94 (DAN RYAN EXPRESSWAY)  
 RETAINING WALL ALONG STATE ST.  
 77TH ST. TO 78TH ST.  
 WALL 70 - GENERAL PLAN  
 STA. 2328+31.89 TO STA. 2322+88.20  
 S.N. 016-W976 DESIGNED BY: MI, DJR  
 SCALE: N.T.S. DRAWN BY: DJR, SB  
 DATE: MARCH 18, 2005 CHECKED BY: TD, MI

**TYLIN INTERNATIONAL**