

**Wang Engineering, INC.**  
 Consulting Geotechnical and Environmental Engineers  
 wangeng3@wangeng.com  
 1145 Main Street  
 Lombard, IL 60148  
 Telephone: 630 953-9928  
 Fax: 630 953-9938

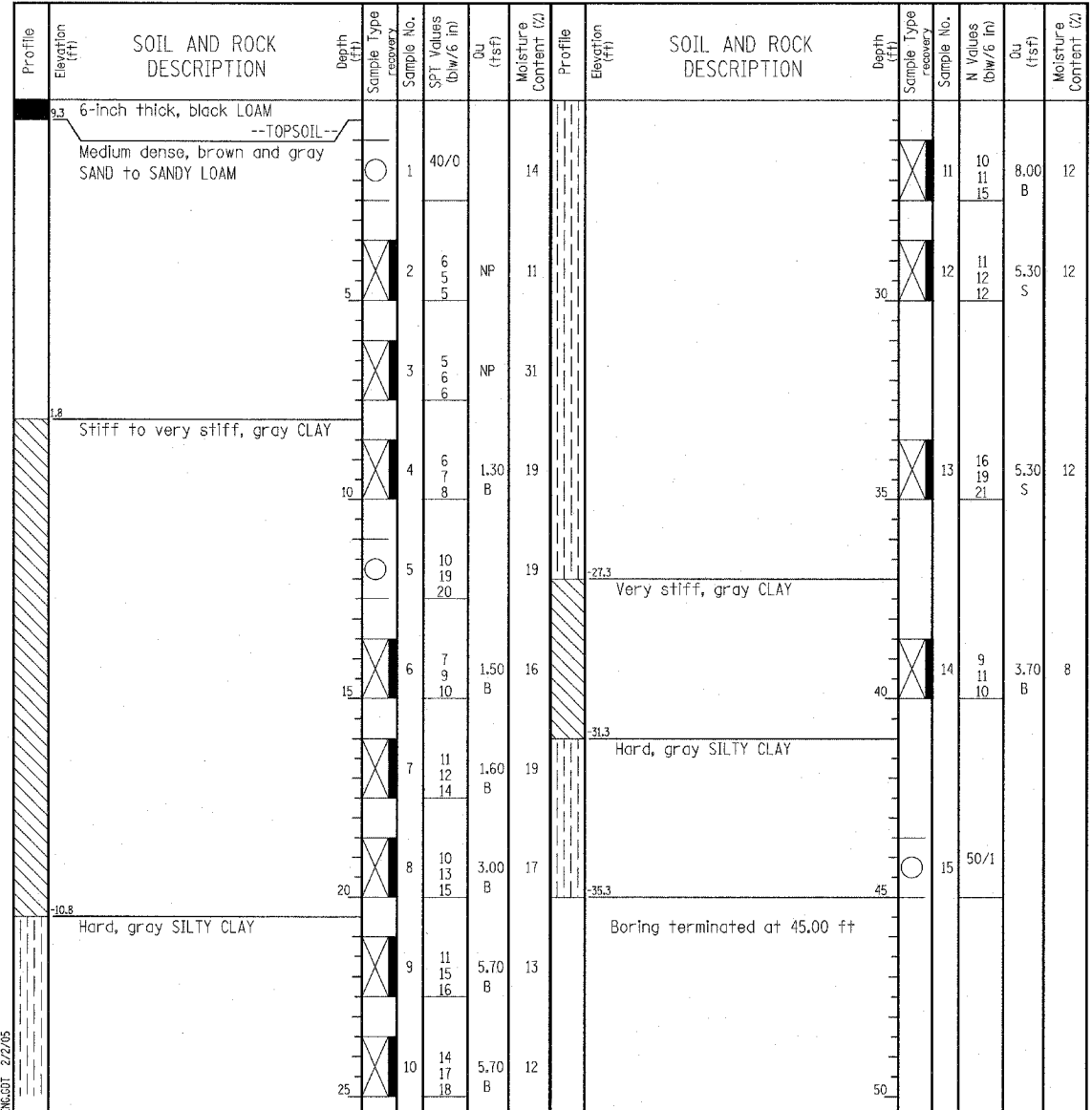
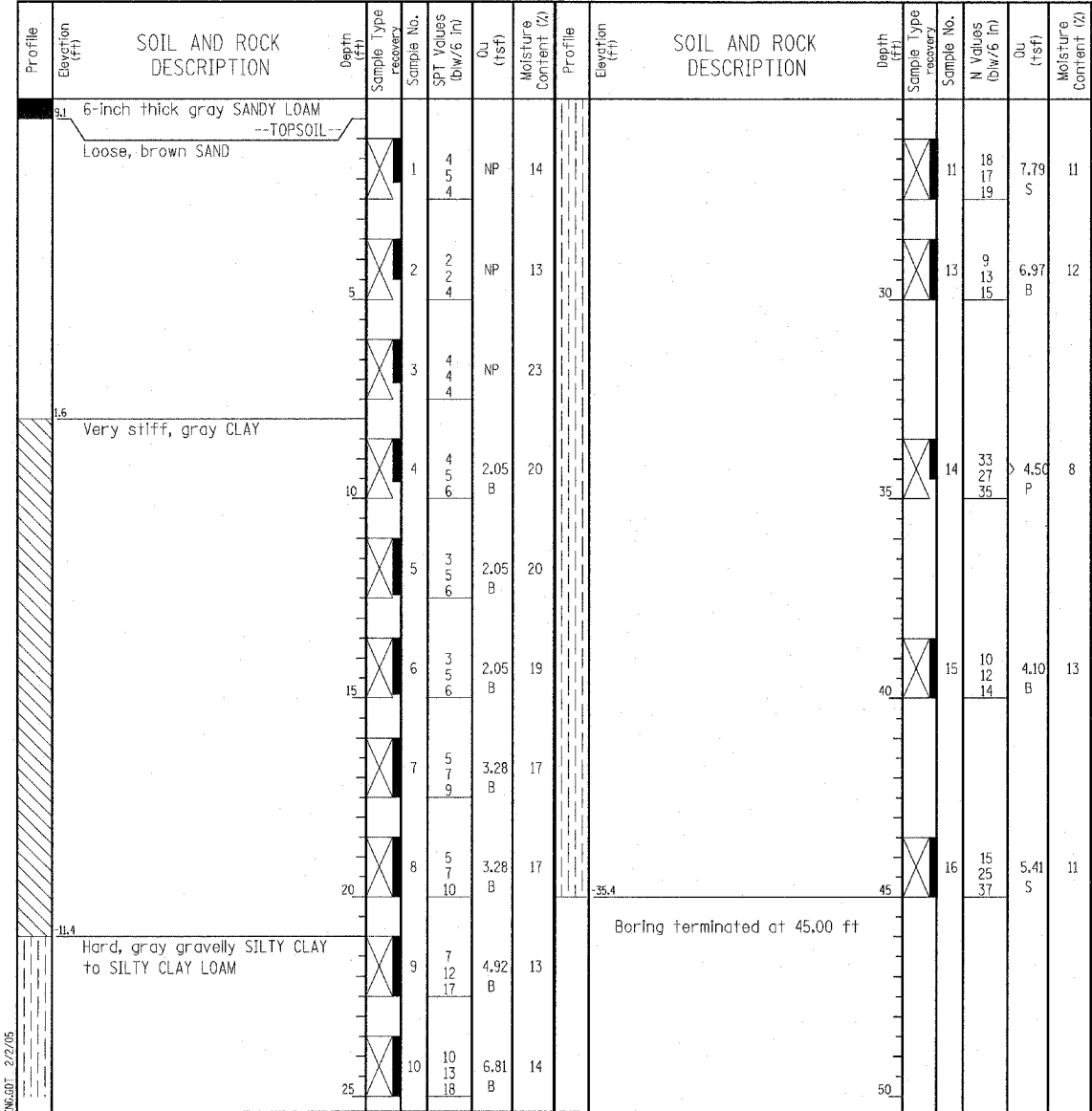
**BORING LOG SB 70-05**  
 WEI Job No.: 414-07-01  
 Datum: CCD  
 Elevation: 9.59 ft  
 North: 1853991.61 ft  
 East: 1177596.20 ft  
 Station: 2326+19.70  
 Offset: 166.41' RT

Client: T. Y. LIN International  
 Project: Dan Ryan Improvements; IDOT D-91-421-01  
 Location: From 95th Street to 69th Street

**Wang Engineering, INC.**  
 Consulting Geotechnical and Environmental Engineers  
 wangeng3@wangeng.com  
 1145 Main Street  
 Lombard, IL 60148  
 Telephone: 630 953-9928  
 Fax: 630 953-9938

**BORING LOG SB 70-06**  
 WEI Job No.: 414-07-01  
 Datum: CCD  
 Elevation: 9.75 ft  
 North: 1853875.06 ft  
 East: 1177599.95 ft  
 Station: 2325+01.96  
 Offset: 161.10' RT

Client: T. Y. LIN International  
 Project: Dan Ryan Improvements; IDOT D-91-421-01  
 Location: From 95th Street to 69th Street



GENERAL NOTES				WATER LEVEL DATA			
Begin Drilling	01-25-2005	Complete Drilling	01-25-2005	While Drilling	▽	DRY	
Drilling Contractor	DLZ Drilling	Drill Rig	D-120 TMR	At Completion of Drilling	▽	DRY	
Driller	J&R	Logger	K. Jacob	Time After Drilling	NA		
Checked by	MLS	Depth to Water	▽	NA			
Drilling Method: 3.25" ID, HSA; Boring backfilled with bentonite upon completion							
The stratification lines represent the approximate boundary between soil types; the actual transition may be gradual.							

GENERAL NOTES				WATER LEVEL DATA			
Begin Drilling	01-24-2005	Complete Drilling	01-24-2005	While Drilling	▽	DRY	
Drilling Contractor	DLZ Drilling	Drill Rig	D-120 TMR	At Completion of Drilling	▽	DRY	
Driller	E&R	Logger	B. Panozzo	Time After Drilling	NA		
Checked by	MLS	Depth to Water	▽	NA			
Drilling Method: 3.25" ID, HSA; Boring backfilled with bentonite upon completion							
The stratification lines represent the approximate boundary between soil types; the actual transition may be gradual.							

**TYLIN INTERNATIONAL**

REVISIONS	
NAME	DATE

ILLINOIS DEPARTMENT OF TRANSPORTATION  
 F.A.I. 94 (DAN RYAN EXPRESSWAY)  
 RETAINING WALL ALONG STATE ST.  
 77TH ST. TO 78TH ST.  
 WALL 70  
 BORING LOGS SB70-05 & SB70-06  
 S.N. 016-W976  
 SCALE: N.T.S.  
 DATE: MARCH 18, 2005

DESIGNED BY: DJR  
 DRAWN BY: DJR  
 CHECKED BY: TD