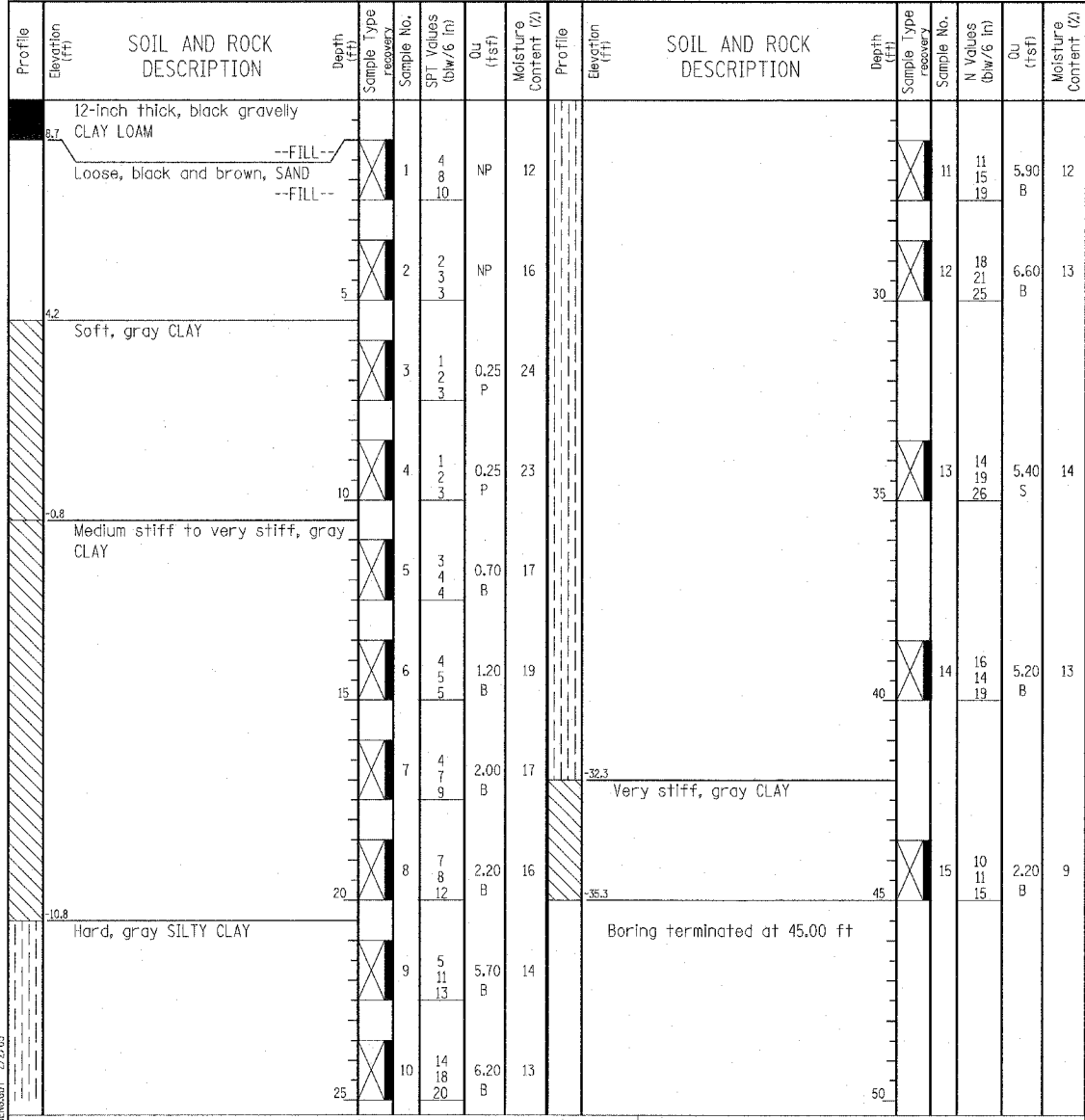


Wang Engineering, INC.
 Consulting Geotechnical and Environmental Engineers
 wangeng3@wangeng.com
 1145 Main Street
 Lombard, IL 60148
 Telephone: 630 953-9928
 Fax: 630 953-9938

BORING LOG SB 70-07 Page 1 of 1

WEI Job No.: 414-07-01
 Client: T. Y. LIN International
 Project: Dan Ryan Improvements; IDOT D-91-421-01
 Location: From 95th Street to 69th Street

Datum: CCD
 Elevation: 9.71 ft
 North: 1853843.00 ft
 East: 1177600.33 ft
 Station: 2324+69.97
 Offset: 158.89' RT



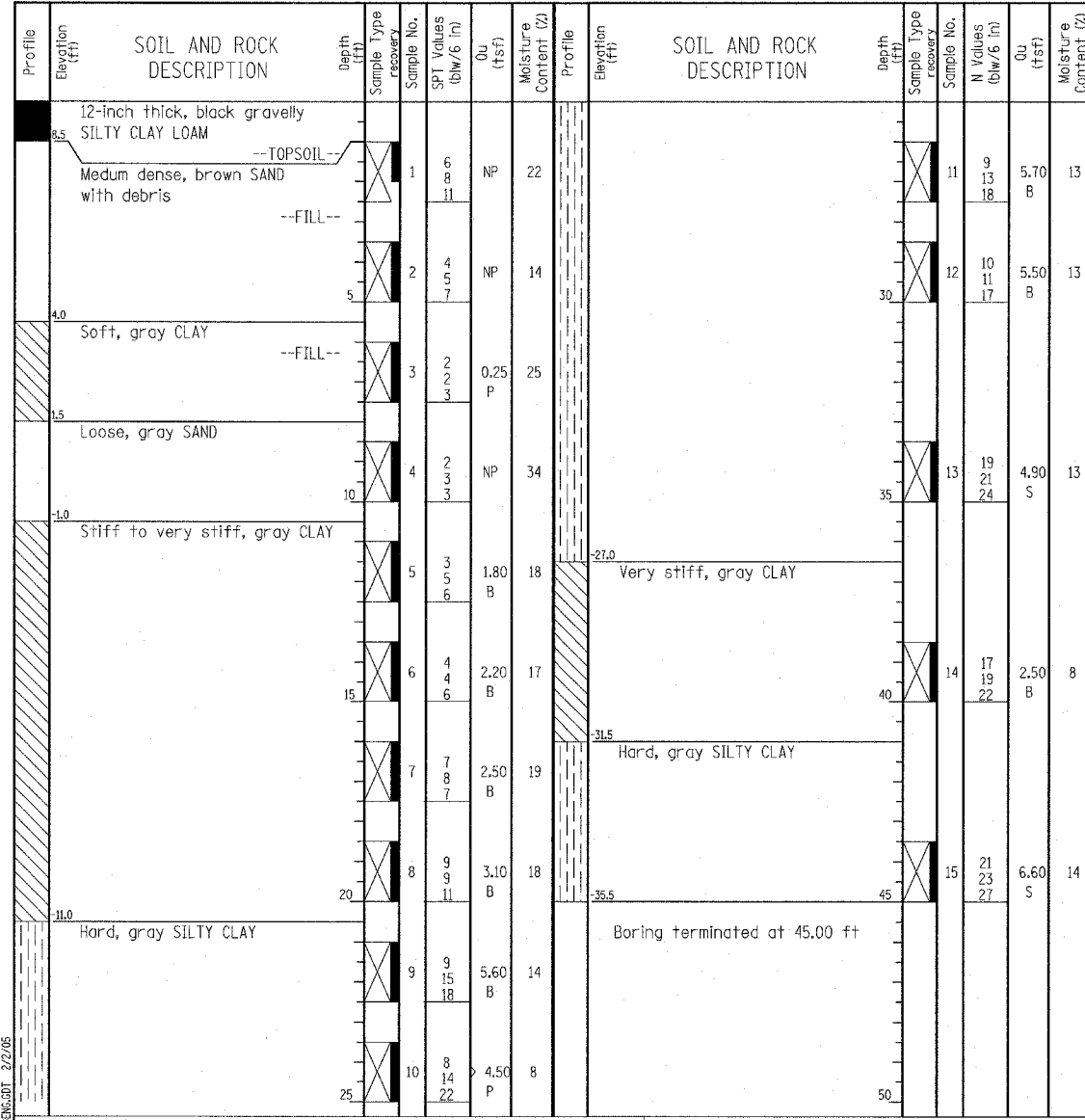
GENERAL NOTES				WATER LEVEL DATA			
Begin Drilling	01-20-2005	Complete Drilling	01-20-2005	While Drilling	▽	DRY	
Drilling Contractor	DLZ Drilling	Drill Rig	D-120 TMR	At Completion of Drilling	▽	DRY	
Driller	E&R	Logger	B. Panozzo	Time After Drilling	NA		
Drilling Method	3.25" ID HSA; Boring backfilled with bentonite upon completion			Depth to Water	▽	NA	
The stratification lines represent the approximate boundary between soil types; the actual transition may be gradual.							

Wang Engineering, INC.
 Consulting Geotechnical and Environmental Engineers
 wangeng3@wangeng.com
 1145 Main Street
 Lombard, IL 60148
 Telephone: 630 953-9928
 Fax: 630 953-9938

BORING LOG SB 70-08 Page 1 of 1

WEI Job No.: 414-07-01
 Client: T. Y. LIN International
 Project: Dan Ryan Improvements; IDOT D-91-421-01
 Location: From 95th Street to 69th Street

Datum: CCD
 Elevation: 9.52 ft
 North: 1853767.40 ft
 East: 1177602.03 ft
 Station: 2323+94.48
 Offset: 154.51' RT



GENERAL NOTES				WATER LEVEL DATA			
Begin Drilling	01-20-2005	Complete Drilling	01-20-2005	While Drilling	▽	DRY	
Drilling Contractor	DLZ Drilling	Drill Rig	D-120 TMR	At Completion of Drilling	▽	DRY	
Driller	E&Y	Logger	B. Panozzo	Time After Drilling	NA		
Drilling Method	3.25" ID HSA; Boring backfilled with bentonite upon completion			Depth to Water	▽	NA	
The stratification lines represent the approximate boundary between soil types; the actual transition may be gradual.							

TYLIN INTERNATIONAL

REVISIONS	
NAME	DATE

ILLINOIS DEPARTMENT OF TRANSPORTATION
 F.A.I. 94 (DAN RYAN EXPRESSWAY)
 RETAINING WALL ALONG STATE ST.
 77TH ST. TO 78TH ST.
 WALL 70
 BORING LOGS SB70-07 & SB70-08
 S.N. 016-W976
 SCALE: N.T.S.
 DATE: MARCH 18, 2005

DESIGNED BY: DJR
 DRAWN BY: DJR
 CHECKED BY: TD