

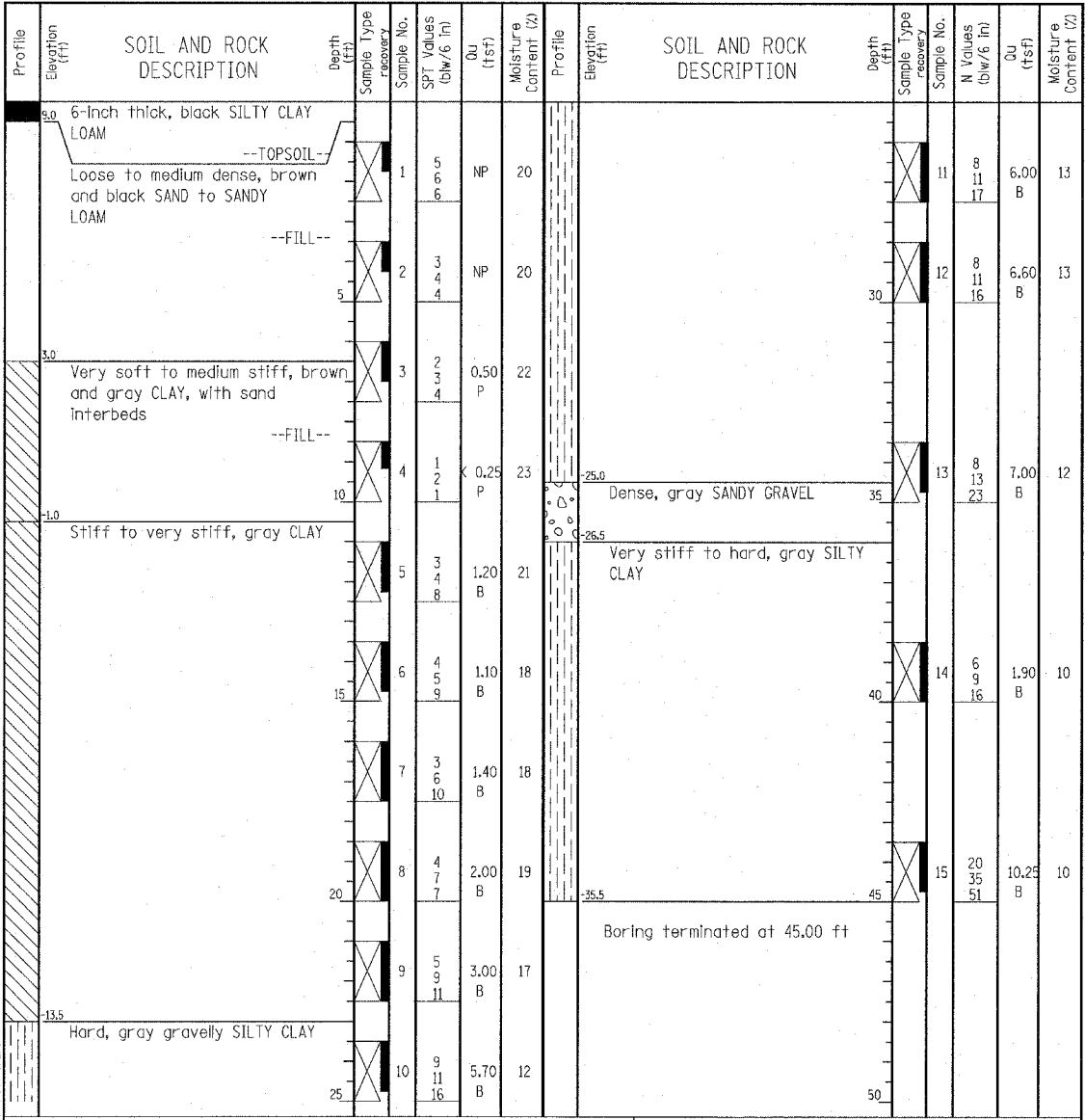
**Wang Engineering, INC.**  
Consulting Geotechnical and Environmental Engineers  
wangeng3@wangeng.com  
1145 Main Street  
Lombard, IL 60148  
Telephone: 630 953-9928  
Fax: 630 953-9938

**BORING LOG SB 70-13** Page 1 of 1

WEI Job No.: 414-07-01

Datum: CCD  
Elevation: 9.48 ft  
North: 1853391.47 ft  
East: 1177618.34 ft  
Station: 2320+18.45  
Offset: 140.49' RT

Client: T. Y. LIN International  
Project: Dan Ryan Improvements; IDOT D-91-421-01  
Location: From 95th Street to 69th Street



GENERAL NOTES				WATER LEVEL DATA			
Begin Drilling	01-19-2005	Complete Drilling	01-19-2005	While Drilling	▽	DRY	
Drilling Contractor	DLZ Drilling	Drill Rig	D-120 TMR	At Completion of Drilling	▽	DRY	
Driller	K&R	Logger	J. Kasnick	Time After Drilling	NA		
Drilling Method	3.25" ID HSA; Boring backfilled with bentonite upon completion			Depth to Water	▽	NA	
The stratification lines represent the approximate boundary between soil types; the actual transition may be gradual.							

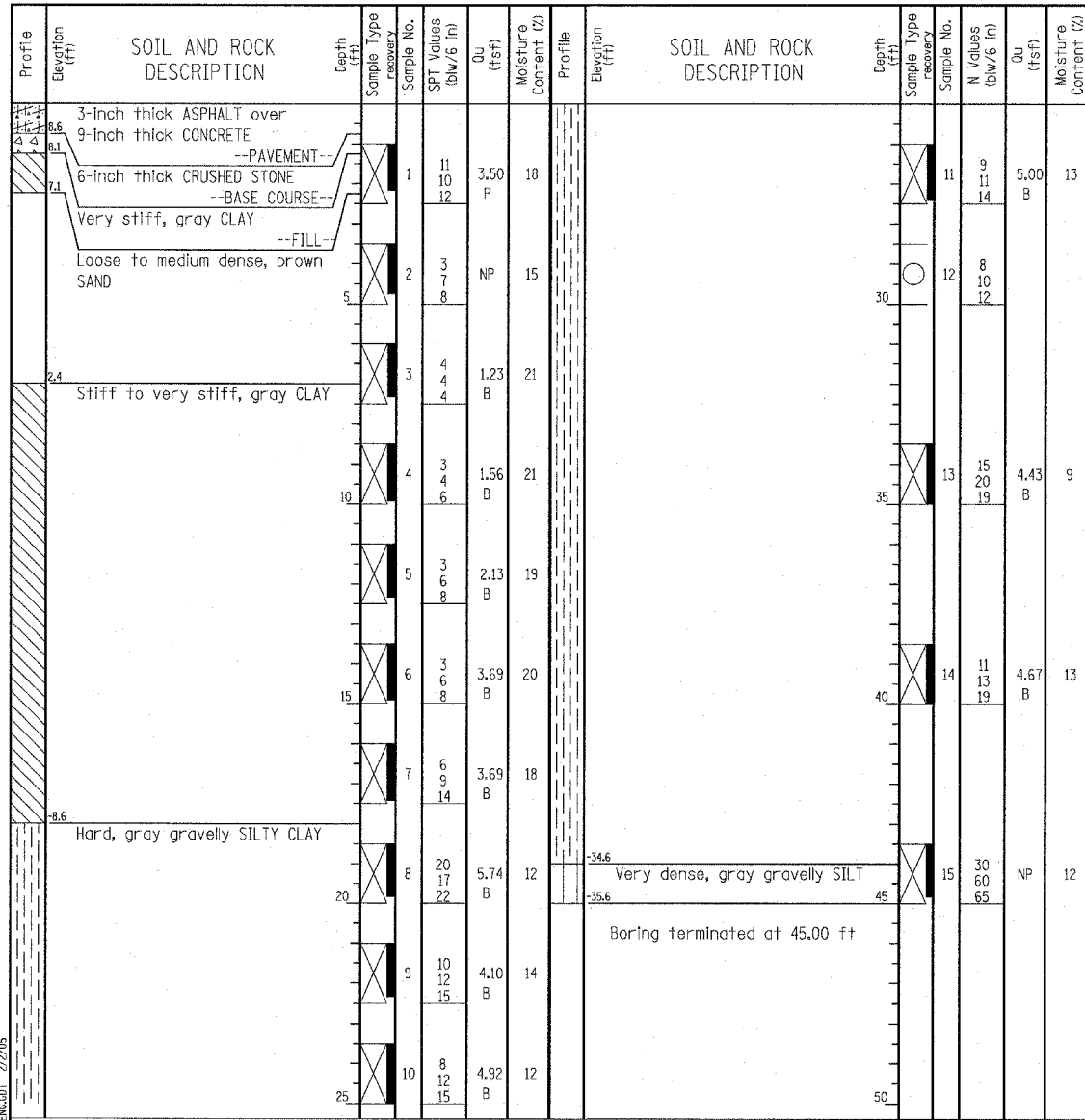
**Wang Engineering, INC.**  
Consulting Geotechnical and Environmental Engineers  
wangeng3@wangeng.com  
1145 Main Street  
Lombard, IL 60148  
Telephone: 630 953-9928  
Fax: 630 953-9938

**BORING LOG SB 70-14** Page 1 of 1

WEI Job No.: 414-07-01

Datum: CCD  
Elevation: 9.37 ft  
North: 1853310.91 ft  
East: 1177618.51 ft  
Station: 2319+38.70  
Offset: 134.28' RT

Client: T. Y. LIN International  
Project: Dan Ryan Improvements; IDOT D-91-421-01  
Location: From 95th Street to 69th Street



GENERAL NOTES				WATER LEVEL DATA			
Begin Drilling	01-24-2005	Complete Drilling	01-24-2005	While Drilling	▽	DRY	
Drilling Contractor	DLZ Drilling	Drill Rig	D-120 TMR	At Completion of Drilling	▽	DRY	
Driller	J&R	Logger	K. Jacob	Time After Drilling	NA		
Drilling Method	3.25" ID HSA; Boring backfilled with bentonite upon completion			Depth to Water	▽	NA	
The stratification lines represent the approximate boundary between soil types; the actual transition may be gradual.							

**TYLIN INTERNATIONAL**

REVISIONS	
NAME	DATE

ILLINOIS DEPARTMENT OF TRANSPORTATION  
F.A.I. 94 (DAN RYAN EXPRESSWAY)  
RETAINING WALL ALONG STATE ST.  
77TH ST. TO 78TH ST.  
WALL 70  
BORING LOGS SB70-13 & SB70-14  
S.N. 016-W976  
SCALE: N.T.S.  
DATE: MARCH 18, 2005

DESIGNED BY: DJR  
DRAWN BY: DJR  
CHECKED BY: TD