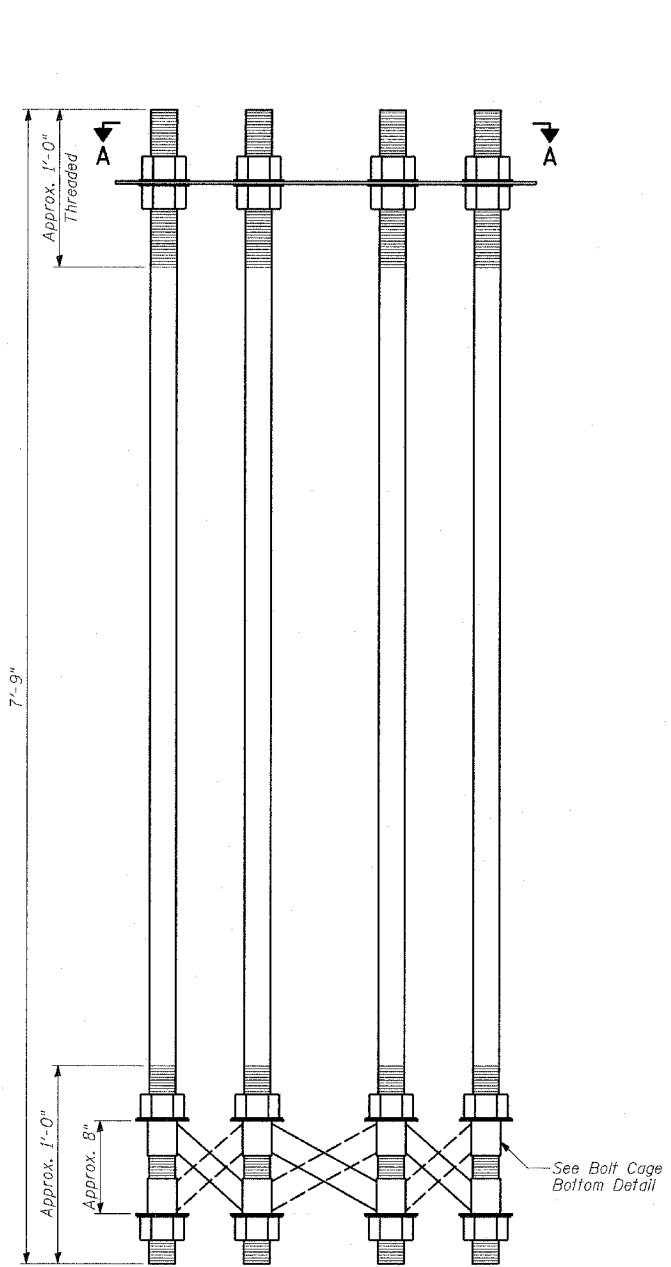
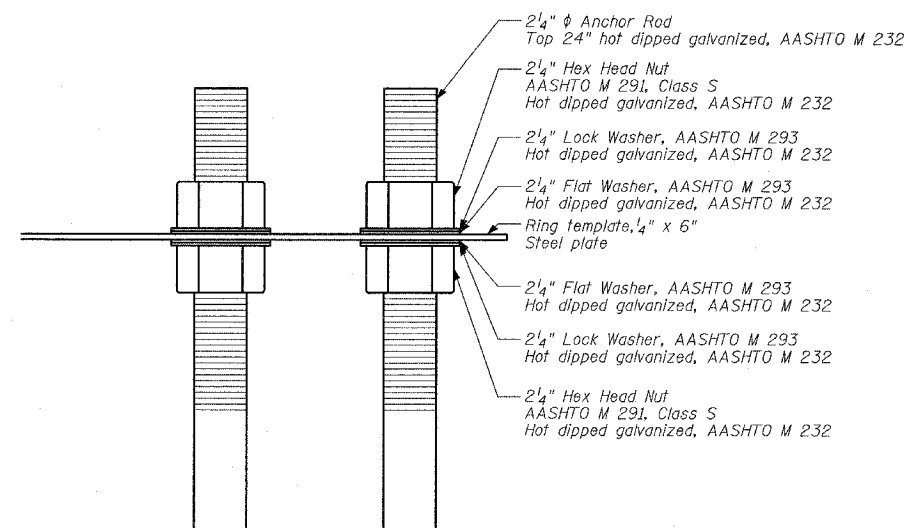


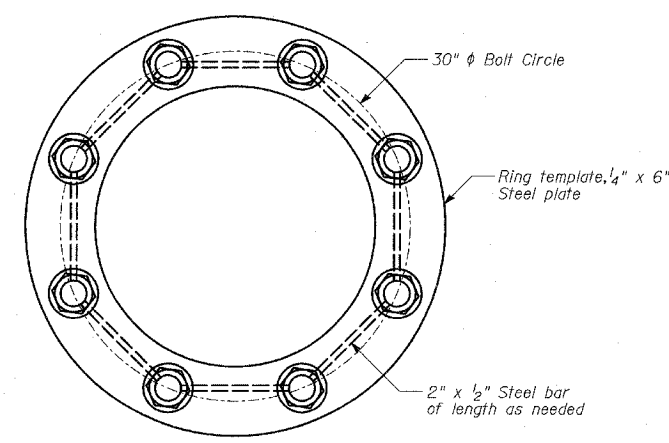
F.A.I. RTE.	SECTION	COUNTY	TOTAL SHEETS	SHEET NO.
94		COOK	860	648
STA. 2200+00.00		TO STA. 2362+00.00		
FED. ROAD DIST. NO.		ILLINOIS FED. AID PROJECT		
(1516.1, 1717 & 1818) R-8				62694



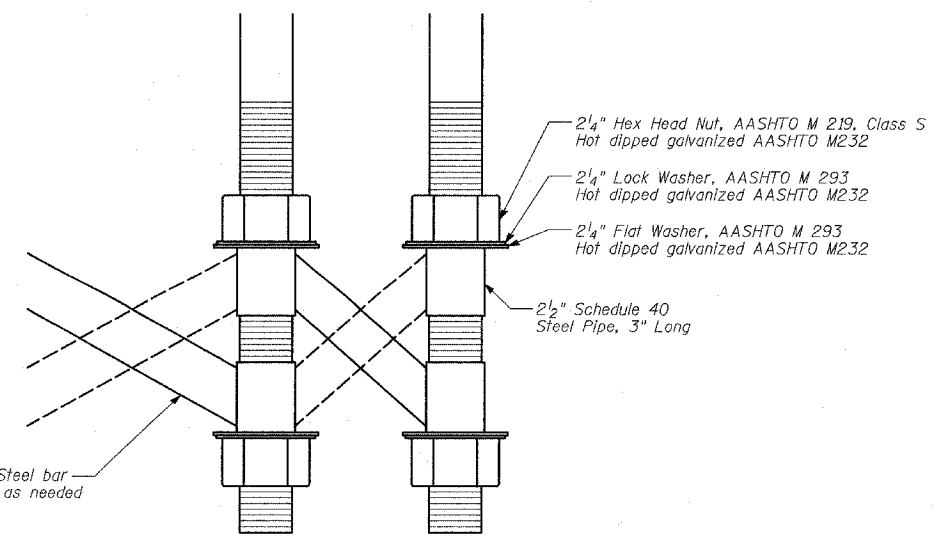
**ANCHOR BOLT CAGE**



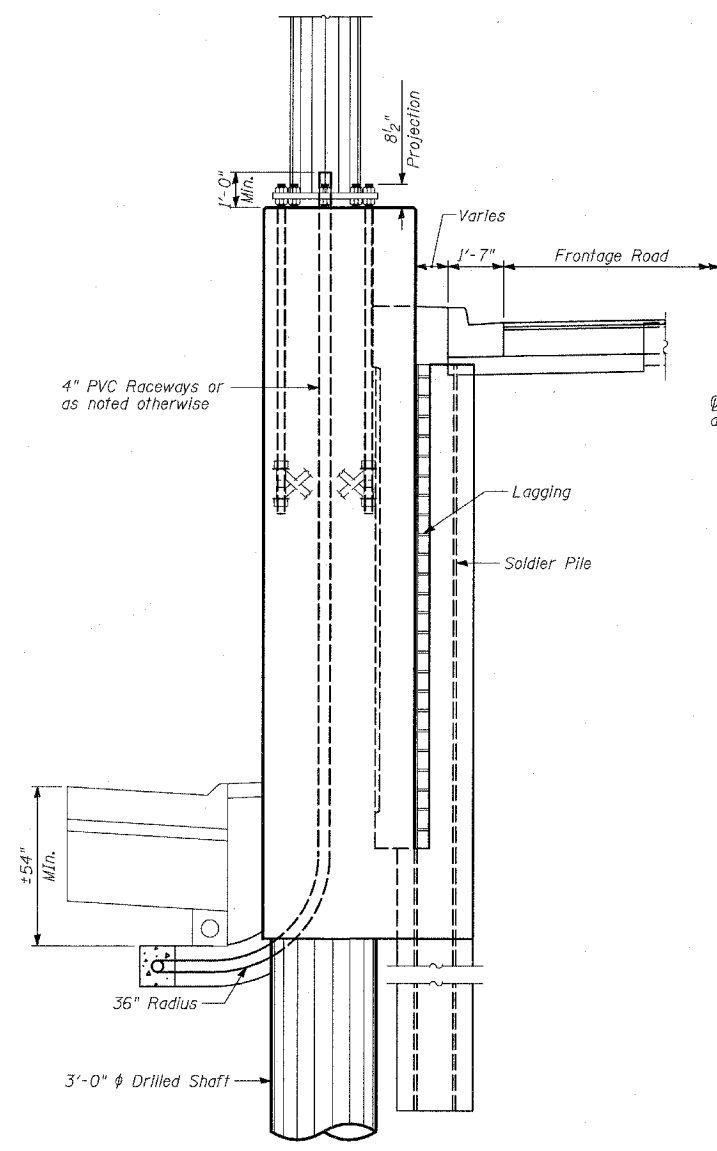
**BOLT CAGE TOP**



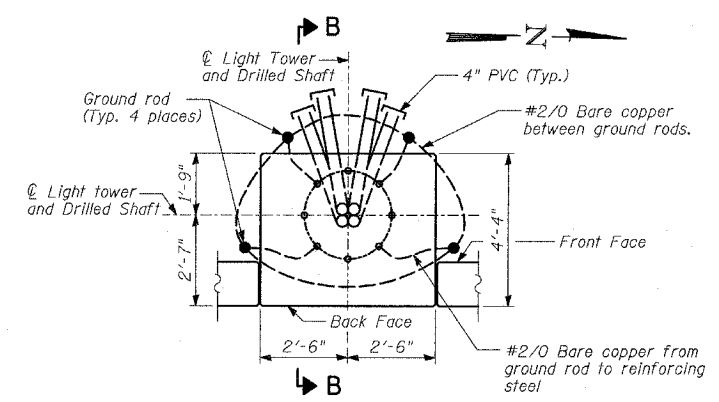
**SECTION A-A**



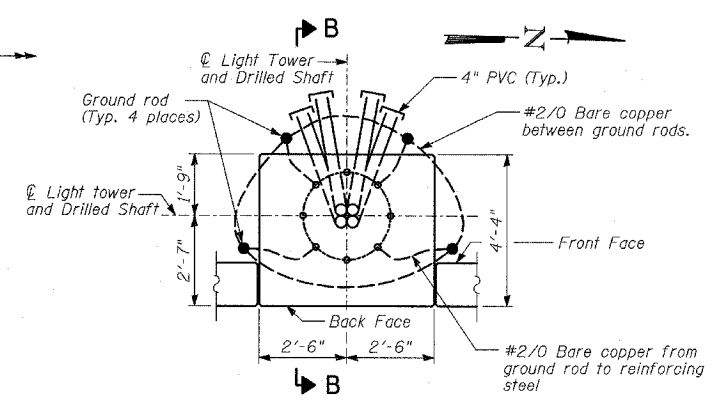
**BOLT CAGE BOTTOM**



**SECTION B-B**



**PLAN - 6ROP1 CONDUIT PLACEMENT**



**PLAN - 6ROP2 CONDUIT PLACEMENT**

**NOTES:**

- Anchor rods shall be straight and shall be according to AASHTO M 314 or ASTM F1554, Grade 105 and galvanized according to Article 1006.09.
- Anchor rod information shall be submitted for approval and shall be fully coordinated with tower manufacturer's requirements.
- The Anchor Rods shall be vertical. No adjustment shall be allowed after the foundation is placed.
- The gap between the foundation and the base plate shall be enclosed with a stainless steel screen fastened with a stainless steel band.
- The Light Tower shall not be erected until after the concrete has been cured according to Article 1020.13.
- Two anchor rods opposite each other shall have the anchor rod threads peened after nuts are installed.
- Refer to BE501 for details.

**TYLIN INTERNATIONAL**

REVISIONS	
NAME	DATE

ILLINOIS DEPARTMENT OF TRANSPORTATION  
**F.A.I. 94 (DAN RYAN EXPRESSWAY)**  
**RETAINING WALL ALONG STATE ST.**  
**EXIT RAMP AT AIS #2**  
**AIS #2**  
**LIGHT TOWER DETAILS**  
 S.N. 016-W960 DESIGNED BY: TD, MAF  
 SCALE: N.T.S. DRAWN BY: MAF, DJR  
 DATE: MARCH 18, 2005 CHECKED BY: MI