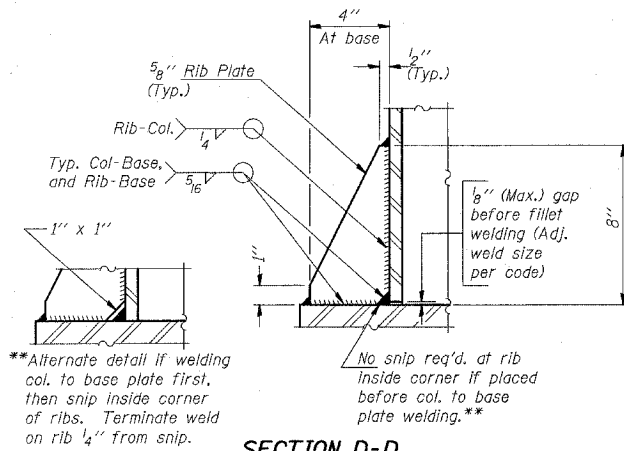
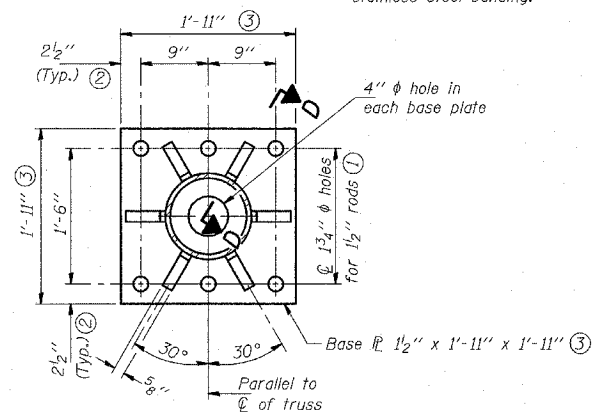
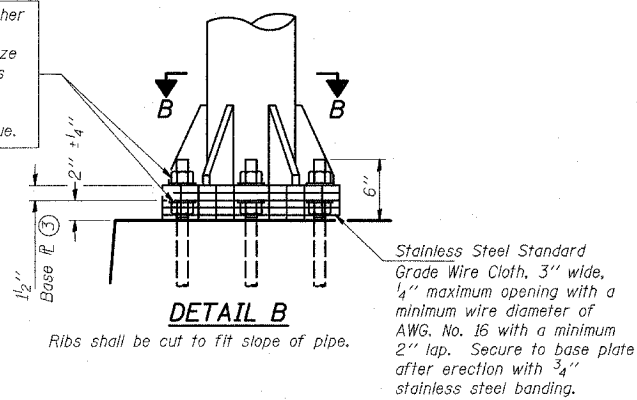
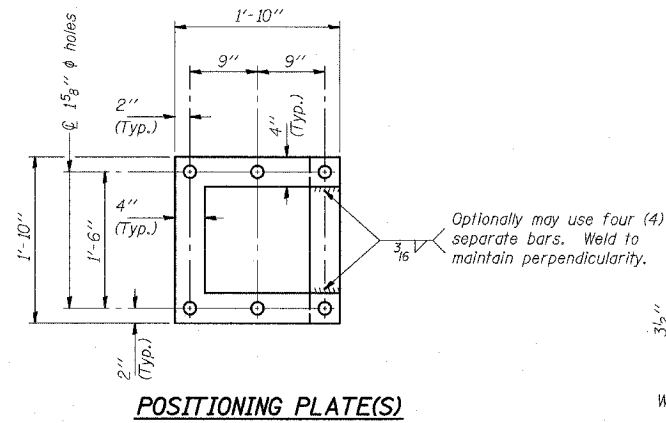


STATE OF ILLINOIS
DEPARTMENT OF TRANSPORTATION

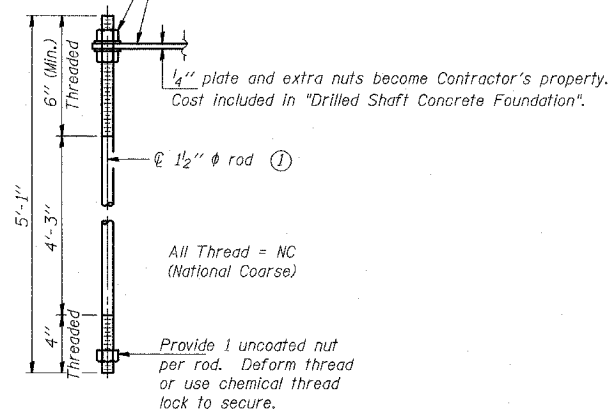
Hexagon locknut and washer (top), leveling nut and washer (bottom). Galvanize per AASHTO M232. Nuts shall each be tightened against base plate with 200 lb.-ft. minimum torque.



**Alternate detail if welding col. to base plate first, then snip inside corner of ribs. Terminate weld on rib 1/4" from snip.



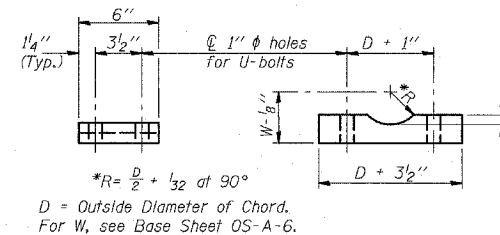
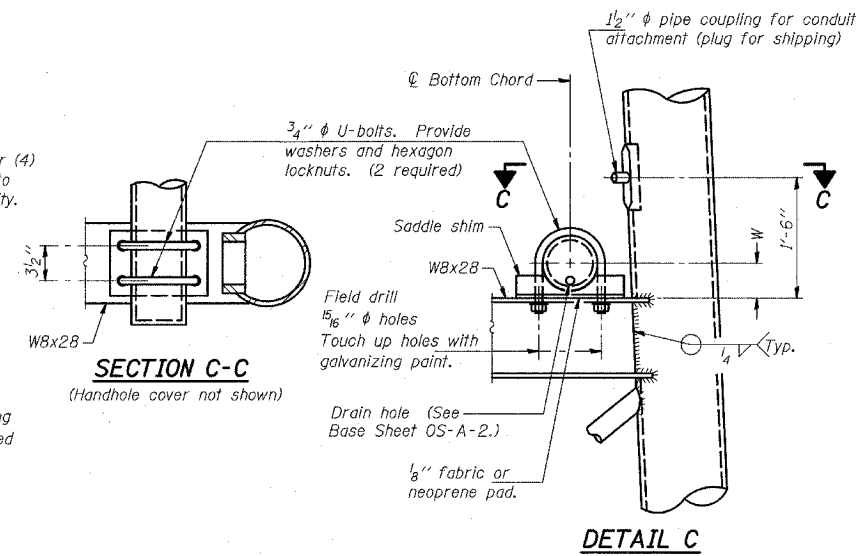
At each location, provide 1/4" thick positioning plate(s) and six (6) additional nuts to be used with leveling nuts to maintain anchor bolts position during concrete placement.



TYPE III-A TRUSS
12" ϕ PIPE SUPPORT FRAME DETAILS

Notes: For Type III-A Truss spans greater than 150 ft. and up to 160 ft.:

- ① 1 3/4" ϕ rod, 2" ϕ holes
- ② 2 3/4" edge distance
- ③ Base Pl. 1 5/8" x 1'-11 1/2" x 1'-11 1/2"



Truss Chord Nominal Dia.	a
7"	1"
8 1/2"	1 1/4"
9"	1 3/8"

SADDLE SHIM DETAIL

ASTM B26 Alloy 356-F

or

ASTM B209 Alloy 6061-T651 (4 required per sign truss)

DESIGNED	
CHECKED	
DRAWN	
CHECKED	

EXAMINED	20
PASSED	

NUMBER	REVISION	DATE

OS4-A-8aA 11/1/2002

REVISIONS	
NAME	DATE

ILLINOIS DEPARTMENT OF TRANSPORTATION
F.A.I. 94 (DAN RYAN EXPRESSWAY)
OVERHEAD SIGN STRUCTURES
SUPPORT FRAME FOR TYPE III-A
ALUMINUM TRUSS

SCALE: AS NOTED
DATE: MARCH 18, 2005
DRAWN BY: AMB
CHECKED BY: TB