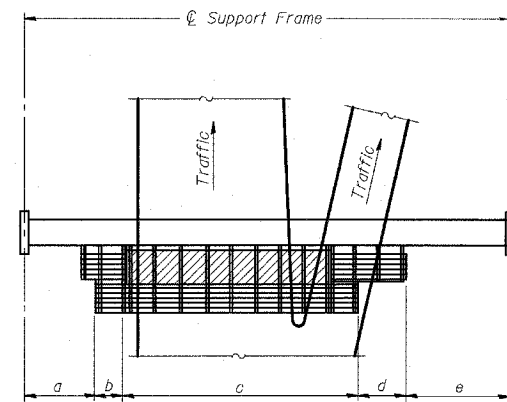
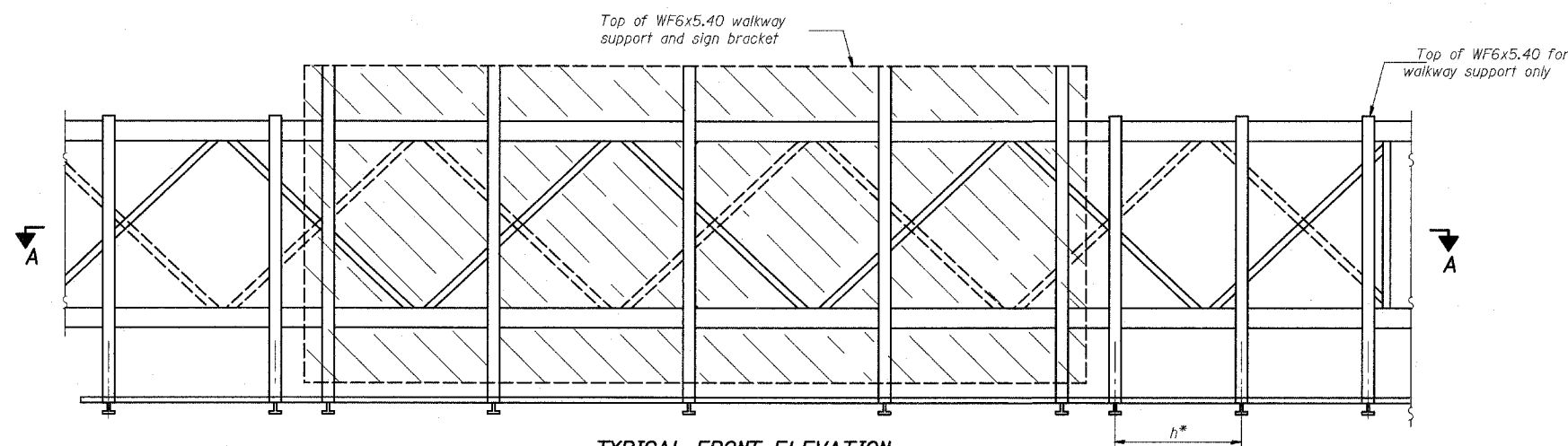


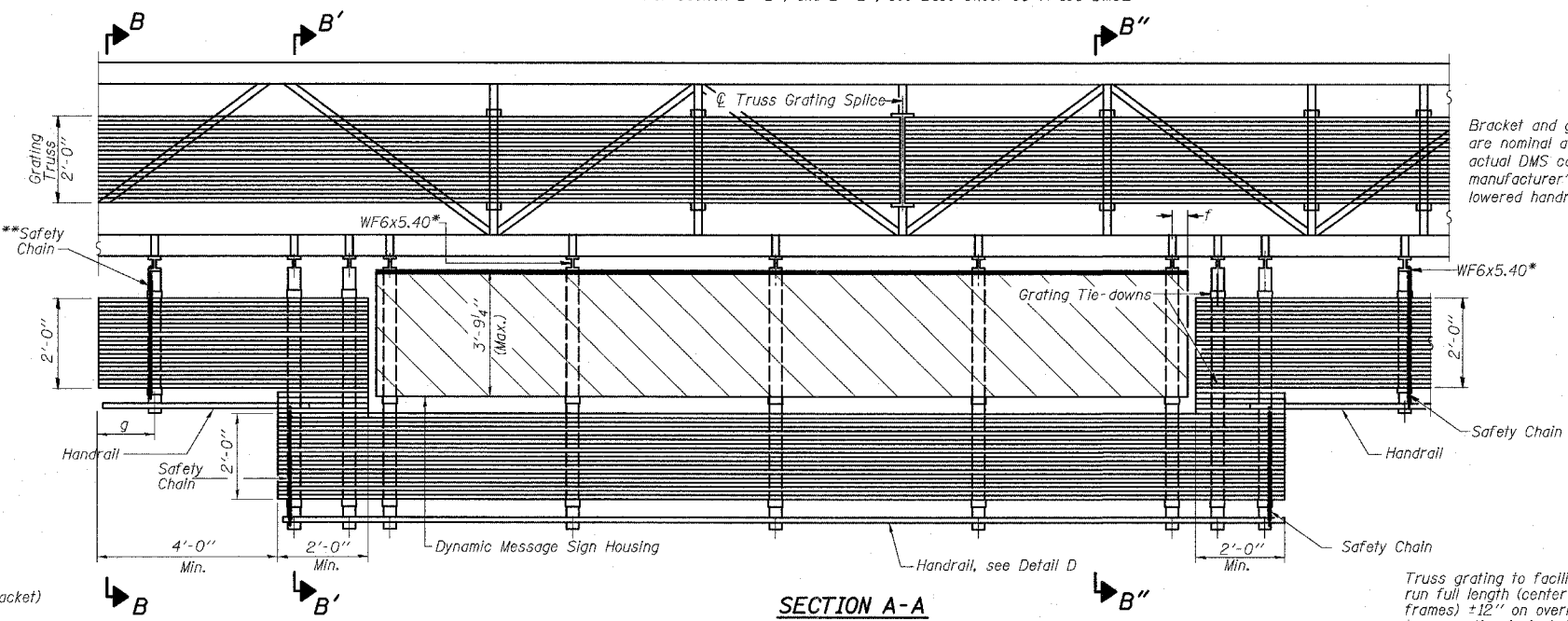
STATE OF ILLINOIS
DEPARTMENT OF TRANSPORTATION



PLAN
WALKWAY AND HANDRAIL SKETCH
(Road plan beneath truss varies)



TYPICAL FRONT ELEVATION
With handrail omitted for clarity.
For Section B-B, see Base Sheet OS-A-10-DMS2
For Section B'-B', and B''-B'', see Base Sheet OS-A-10a-DMS2



SECTION A-A

BRACKET TABLE

Sign Width		Number Brackets Required
Greater Than	Less Than or Equal To	
10'-0"	10'-0"	2
10'-0"	16'-0"	3
16'-0"	22'-0"	4
22'-0"	28'-0"	5
28'-0"	34'-0"	6

Walkway and Truss Grating width dimensions are nominal and may vary $\pm 1/2$ " based on available standard widths.

Bracket and grating dimensions are nominal and will vary based on actual DMS cabinet dimensions plus manufacturer's mounting devices, lowered handrail and DMS cabinet.

Notes: *Space WF6x5.40 brackets for efficiency and within limits shown:

- f = 12" maximum, 4" minimum (End of sign to ϕ of nearest bracket)
- g = 12" maximum, 4" minimum (End of walkway grating to ϕ of nearest support bracket)
- h = 6'-0" maximum (ϕ to ϕ or walkway support brackets, WF6x5.40)

**If walkway bracket at safety chain location is behind sign, add angle to bracket, see Alternate Safety Chain Attachment on Base Sheet OS-A-11-DMS2

For Details T and W, Section B-B and Grating Splice Details, see Base Sheet OS-A-10-DMS2.
For Details D, F, G and P and Handrail Splice Details, see Base Sheet OS-A-11-DMS2.

Handrail and walkway shall span a minimum of three brackets between splices and/or gap joints.
Place all sign and walkway brackets as close to panel points as practical.
Grating and handrail splices placed as needed.

DESIGNED	
CHECKED	
DRAWN	
CHECKED	

EXAMINED	19
PASSED	

NUMBER	REVISION	DATE

Structure Number	Station	a	b	c	d	e	Walkway Grating and Handrail Lengths
ISO161094R06L3	2282+42	26.98'	2'	28.42'	18.79'	35.81'	68'

OS-A-9-DMS2 7/1/2001

REVISIONS	
NAME	DATE

ILLINOIS DEPARTMENT OF TRANSPORTATION
F.A.I. 94 (DAN RYAN EXPRESSWAY)
OVERHEAD SIGN STRUCTURES
ALTERNATE ALUMINUM WALKWAY DETAILS
SCALE: AS NOTED
DATE: MARCH 18, 2005
DRAWN BY: AMB
CHECKED BY: TB