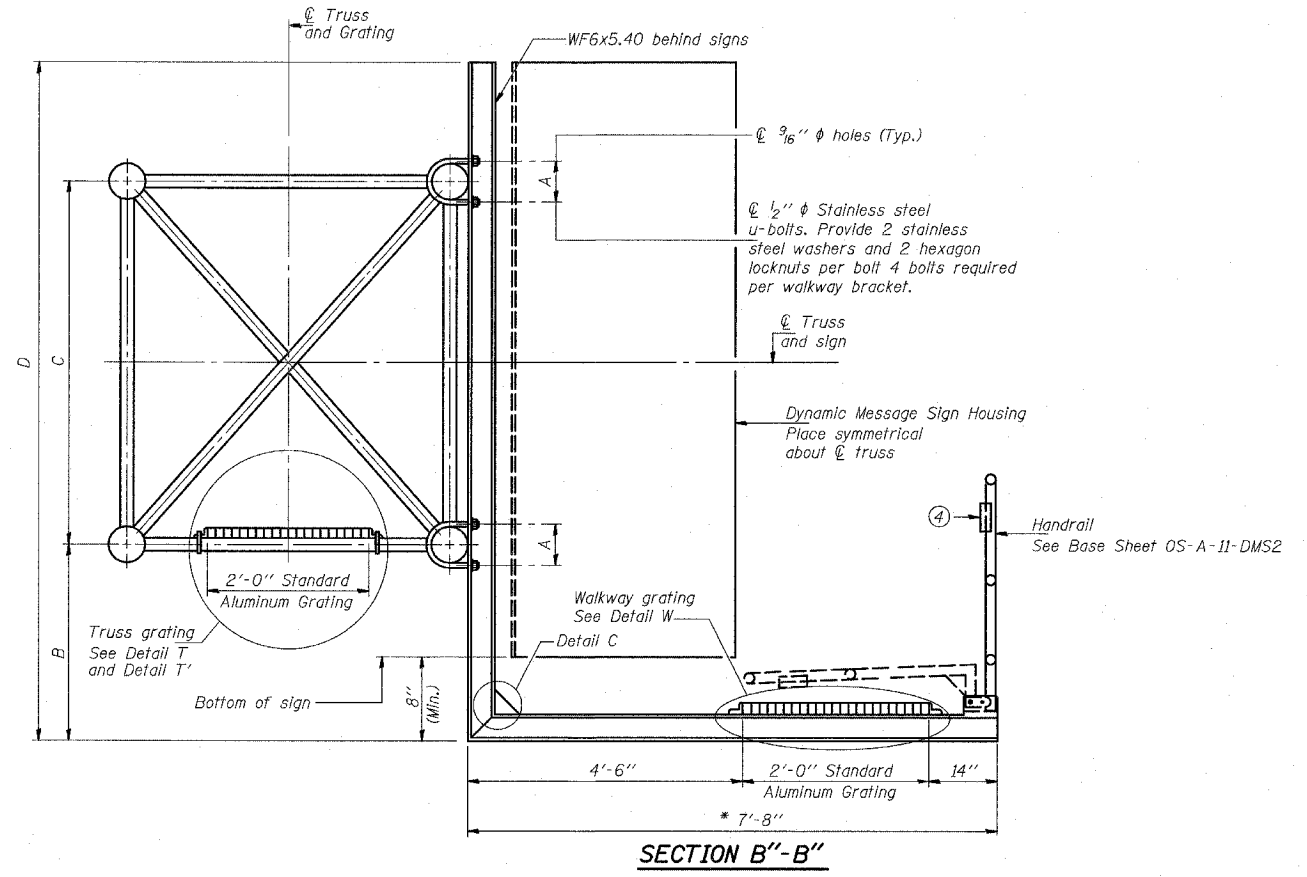
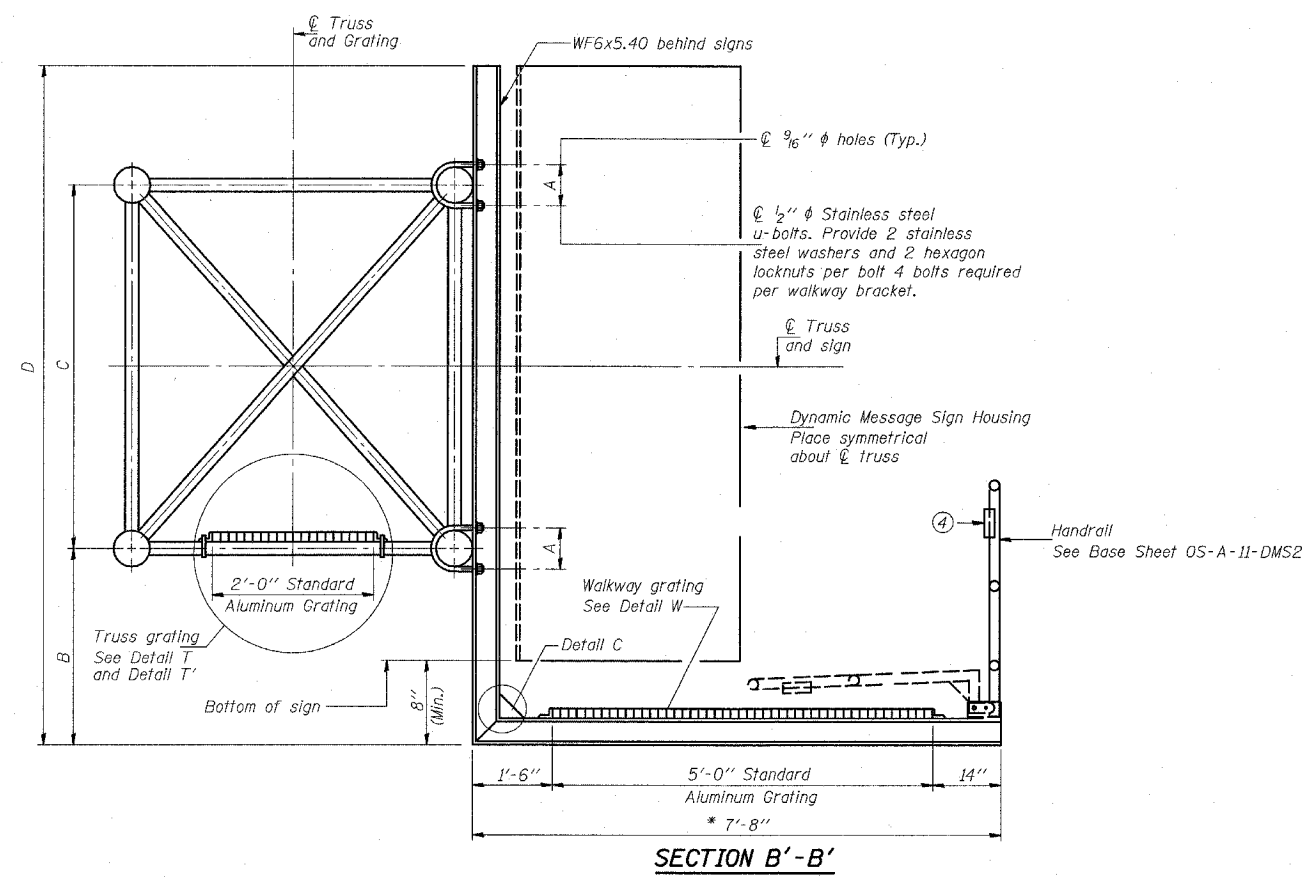


F.A.I. RTE.	SECTION	COUNTY	TOTAL SHEETS	SHEET NO.
94		COOK	860	709
STA. 2200+00.00		TO STA. 2362+00.00		
FED. ROAD DIST. NO.		ILLINOIS FED. AID PROJECT		
• (1516.1, 1717 & 1818) R-8				62694

STATE OF ILLINOIS  
DEPARTMENT OF TRANSPORTATION



\* Bracket and grating dimensions are nominal and will vary based on actual DMS cabinet dimensions plus manufacturer's mounting devices, and providing clearance between the lowered handrail and DMS cabinet.

Note:  
For dimensions "A" to "D" and remaining details, see sheet OS-A-10-DMS2

DESIGNED	19
CHECKED	EXAMINED
DRAWN	PASSED
CHECKED	ENGINEER OF BRIDGES AND STRUCTURES

OS-A-10a-DMS2 7/1/2001

NUMBER	REVISION	DATE

TYLIN INTERNATIONAL

REVISIONS		NAME	DATE

ILLINOIS DEPARTMENT OF TRANSPORTATION  
F.A.I. 94 (DAN RYAN EXPRESSWAY)  
  
OVERHEAD SIGN STRUCTURES  
ALTERNATE ALUMINUM WALKWAY DETAILS

SCALE: AS NOTED      DRAWN BY: AMB  
DATE: MARCH 18, 2005      CHECKED BY: TB